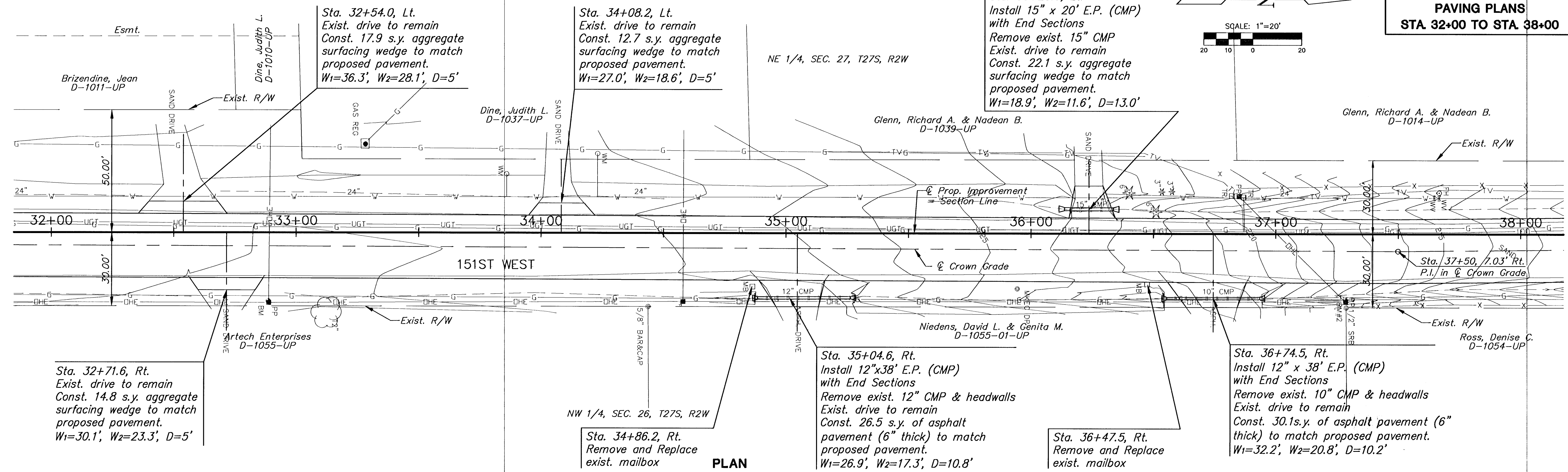
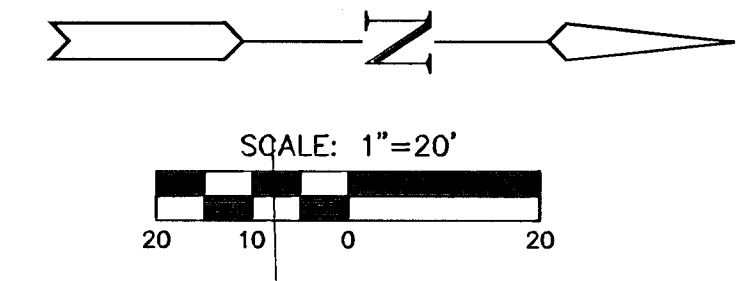


**151ST ST. WEST IMPROVEMENTS
PAVING PLANS
STA 32+00 TO STA 38+00**



Sta. 32+71.6, Rt.
Exist. drive to remain
Const. 14.8 s.y. aggregate
surfacing wedge to match
proposed pavement.
W₁=30.1', W₂=23.3', D=5'

Sta. 32+54.0, Lt.
Exist. drive to remain
Const. 17.9 s.y. aggregate
surfacing wedge to match
proposed pavement.
W₁=36.3', W₂=28.1', D=5'

Sta. 34+08.2, Lt.
Exist. drive to remain
Const. 12.7 s.y. aggregate
surfacing wedge to match
proposed pavement.
W₁=27.0', W₂=18.6', D=5'

Sta. 36+23.6, Lt.
Install 15" x 20' E.P. (CMP)
with End Sections
Remove exist. 15" CMP
Exist. drive to remain
Const. 22.1 s.y. aggregate
surfacing wedge to match
proposed pavement.
W₁=18.9', W₂=11.6', D=13.0'

Sta. 35+04.6, Rt.
Install 12"x38' E.P. (CMP)
with End Sections
Remove exist. 12" CMP & headwalls
Exist. drive to remain
Const. 26.5 s.y. of asphalt
pavement (6" thick) to match
proposed pavement.
W₁=26.9', W₂=17.3', D=10.8'

Sta. 36+47.5, Rt.
Remove and Replace
exist. mailbox

Sta. 36+74.5, Rt.
Install 12" x 38' E.P. (CMP)
with End Sections
Remove exist. 10" CMP & headwalls
Exist. drive to remain
Const. 30.1s.y. of asphalt pavement (6"
thick) to match proposed pavement.
W₁=32.2', W₂=20.8', D=10.2'

PROFILE

SCALE: HORIZ: 1"=20'
VERT: 1"=5'

