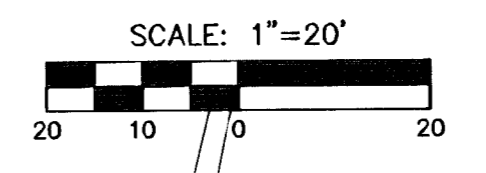


**151ST ST. WEST IMPROVEMENTS  
PAVING PLANS  
STA. 38+00 TO STA. 44+00**



MILES WEST WIND LAKES ESTATES  
Lot 4  
Reiswig, Michael A. & Michelle D.

MILES WEST WIND LAKES ESTATES  
Lot 5  
Nelsen, Murray Dean ETUX

Sta. 43+07.4, Lt.  
Exist. drive to remain  
Const. 14.4 s.y. aggregate  
surfacing wedge to match  
proposed pavement.  
W1=15.6', W2=10.4', D=10.0'

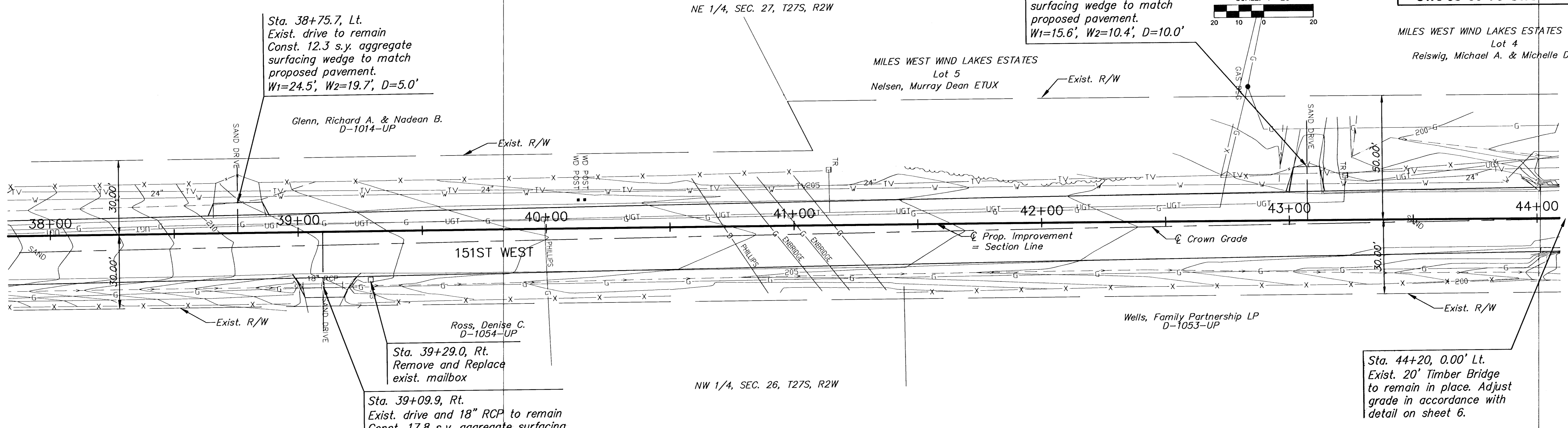
Sta. 38+75.7, Lt.  
Exist. drive to remain  
Const. 12.3 s.y. aggregate  
surfacing wedge to match  
proposed pavement.  
W1=24.5', W2=19.7', D=5.0'

Glenn, Richard A. & Nadean B.  
D-1014-UP

Ross, Denise C.  
D-1054-UP

Sta. 39+09.9, Rt.  
Exist. drive and 18" RCP to remain  
Const. 17.8 s.y. aggregate surfacing  
wedge to match proposed pavement.  
W1=24.8', W2=15.7', D=8.0'

Sta. 44+20, 0.00' Lt.  
Exist. 20' Timber Bridge  
to remain in place. Adjust  
grade in accordance with  
detail on sheet 6.



**PLAN**

**PROFILE**

SCALE: HORIZ: 1"=20'  
VERT: 1"=5'

