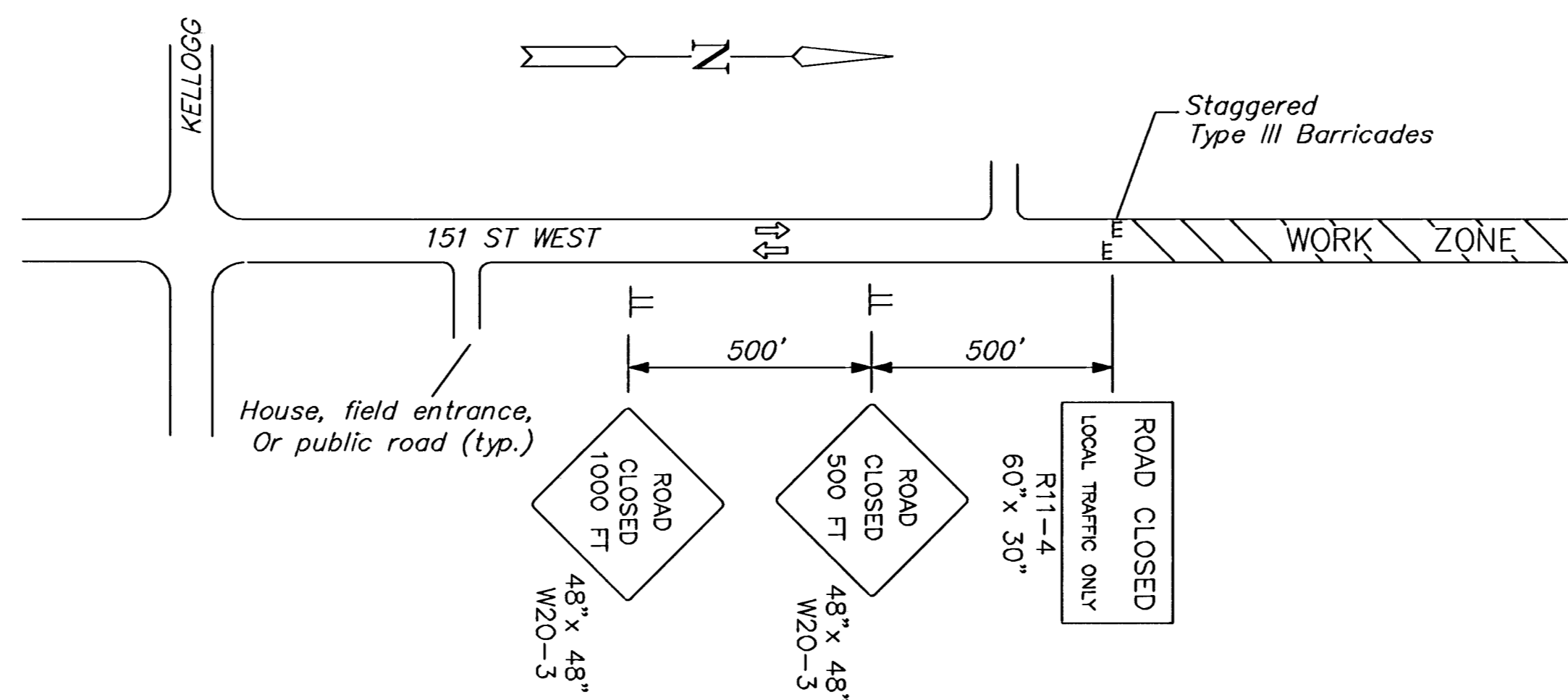


**CONSTRUCTION SEQUENCE AND TRAFFIC CONTROL NOTES**

- 151st Street within the project limits will be closed to through traffic during construction. Local access shall be maintained throughout construction.
- Traffic control shall be in accordance with Figures 1 and 2 on this sheet.
- In general, work is to be performed one lane at a time with the other lane open to local traffic. Access to properties along the project must be maintained during construction. Work at driveways shall be coordinated with the property owner ahead of time.
- Traffic control on Maple shall be provided in accordance with Figure 3 on this sheet when grading operations begin at the intersection with Maple.
- All traffic control shall be in accordance with the latest edition of the Manual on Uniform Traffic Control Devices.

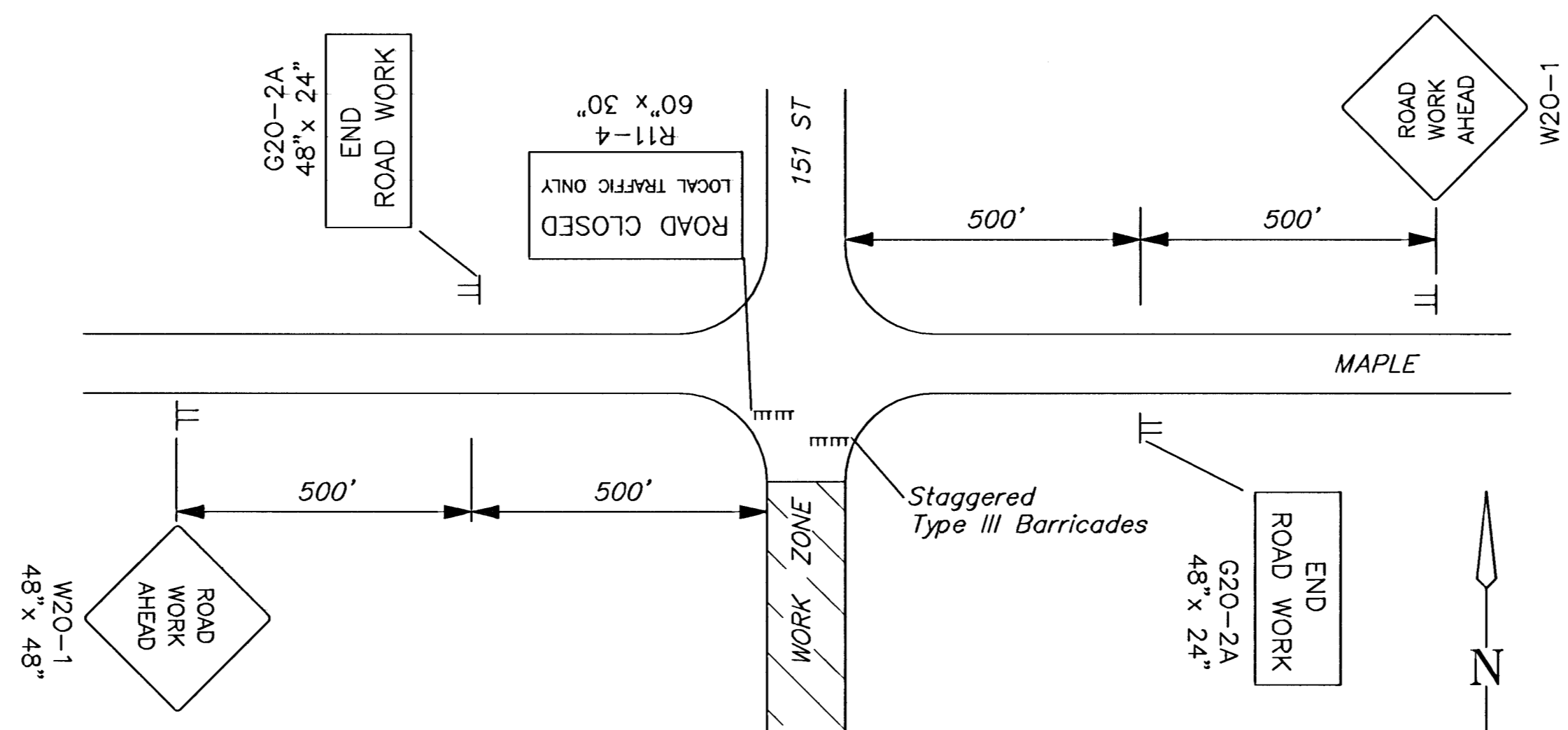
**LEGEND**

- ▬ Type III Barricades
- ▬ Sign
- Channelizing Device



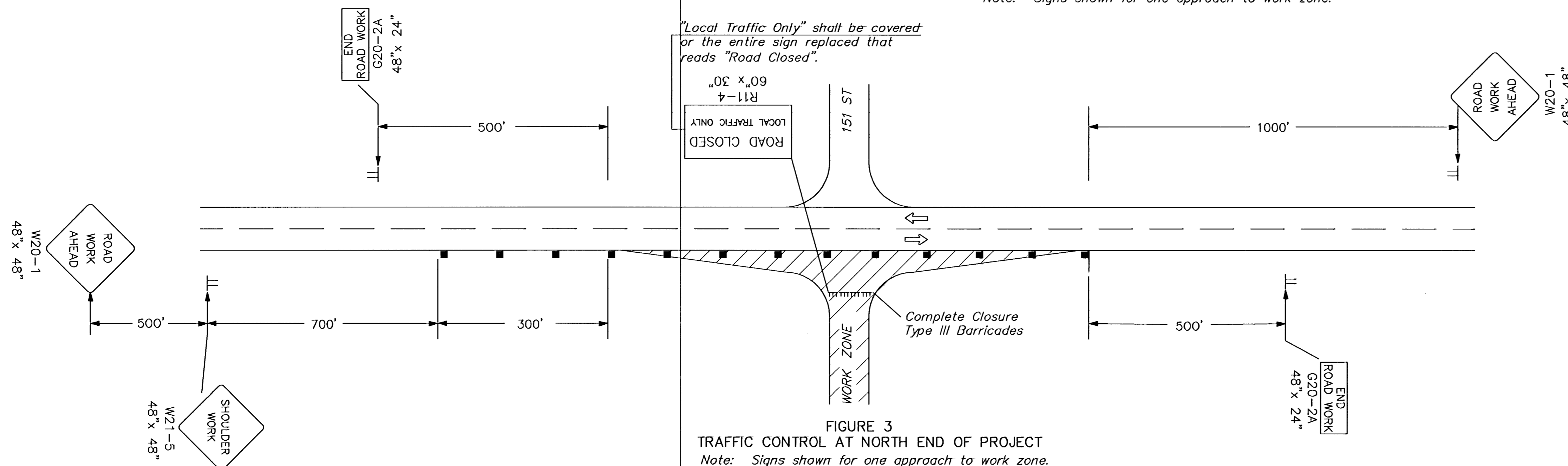
**FIGURE 1**  
TRAFFIC CONTROL AT SOUTH END OF PROJECT

Note: Signs shown for one approach to work zone.



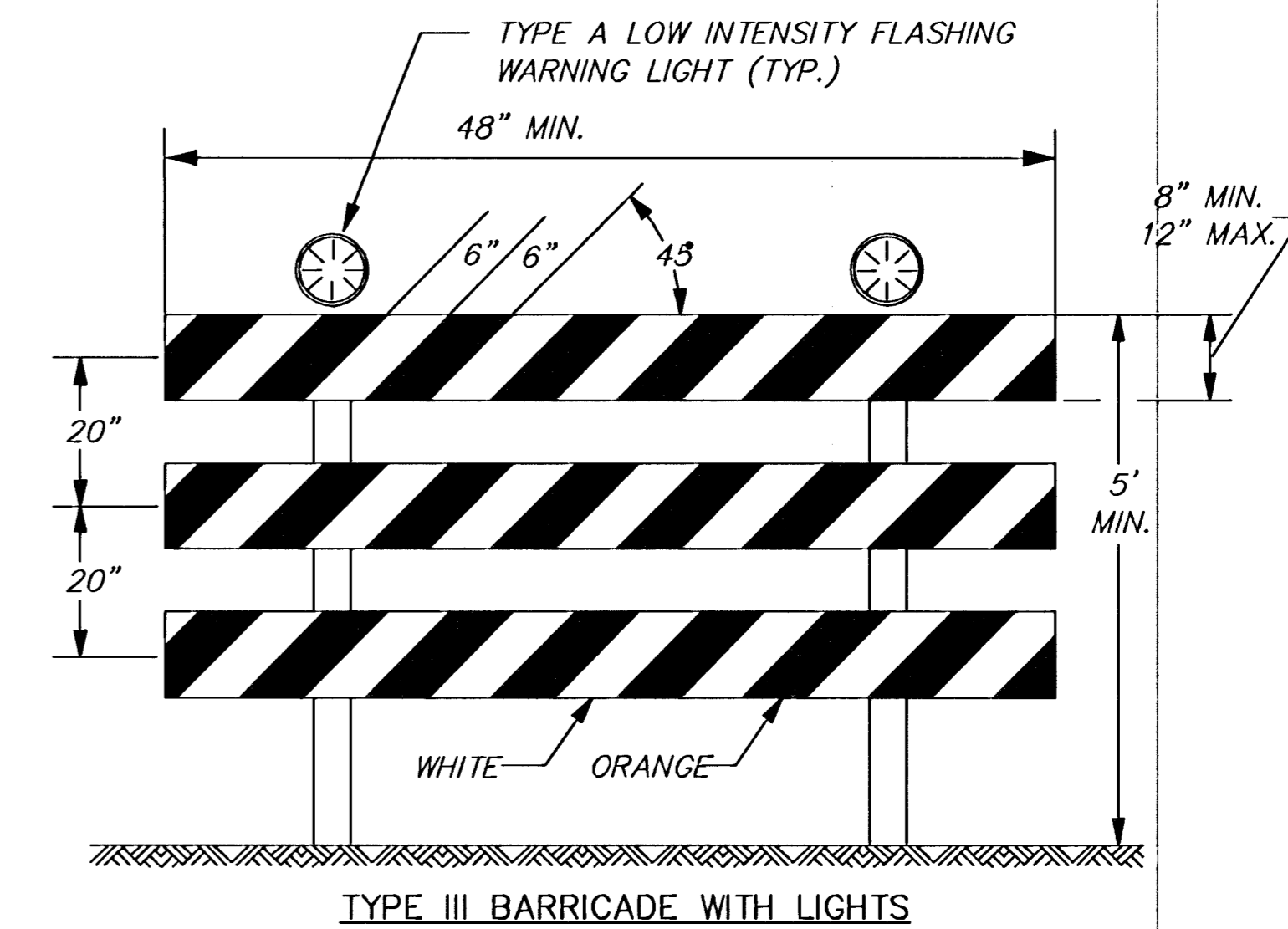
**FIGURE 2**  
TRAFFIC CONTROL AT NORTH END OF PROJECT

Note: Signs shown for one approach to work zone.



**FIGURE 3**  
TRAFFIC CONTROL AT NORTH END OF PROJECT

Note: Signs shown for one approach to work zone.



THE ENTIRE AREA OF BARRICADE RAILS, BOTH FRONT AND BACK, SHALL BE FULLY REFLECTORIZED WITH TYPE III HIGH PERFORMANCE RETROREFLECTIVE SHEETING.

THE STRIPED SHALL SLOPE DOWNWARD TO THE SIDE TRAFFIC IS TO PROCEED OR TOWARD THE CENTER OF THE ROADWAY AT ROAD CLOSURES.

APPROVED SIGNS MOUNTED ON TYPE III BARRICADES SHOULD NOT COVER MORE THAN 50% OF THE TOP TWO RAILS OR 33% OF THE TOTAL AREA OF THE THREE RAILS.

WHEN BARRICADES ARE PLACED END-TO-END, A TYPE A FLASHING WARNING LIGHT SHALL BE MOUNTED NEAR EACH OUTSIDE CORNER OF THE END BARRICADES.

TYPE A FLASHING WARNING LIGHTS SHALL BE MAINTAINED SO AS TO BE VISIBLE ON A CLEAR NIGHT FROM A DISTANCE OF 3300'.

**BARRICADE PLACEMENT**

**A) COMPLETE ROAD CLOSURE**

WHEN A ROADWAY IS CLOSED, TYPE III BARRICADES SHALL BE PLACED END-TO-END TO COMPLETELY COVER THE ROADWAY AND SHOULDERS. WHEN ACCESS MUST BE ALLOWED FOR CONSTRUCTION OR OTHER OFFICIAL/GOVERNMENT VEHICLES, TYPE III BARRICADES SHALL BE LONGITUDINALLY STAGGERED FAR ENOUGH APART FROM ONE ANOTHER TO ALLOW SAFE PASSAGE OF VEHICLES AND MAINTAIN THE APPEARANCE OF A CLOSED ROADWAY. TYPE III BARRICADES SHALL BE REALIGNED AND PLACED END-TO-END TO DENY ANY ACCESS WHEN THE CONSTRUCTION ACTIVITY HAS CEASED FOR THE DAY.

**B) ROAD CLOSED - LOCAL TRAFFIC**

AS SHOWN IN FIGURE 1 & 2, WHEN LOCAL TRAFFIC MUST BE ALLOWED ACCESS INTO THE WORK ZONE, TYPE III BARRICADES SHALL BE LONGITUDINALLY STAGGERED TO MAINTAIN THE APPEARANCE OF A CLOSED ROADWAY.

J:\Civil\05746\dwg\traffic\05746tr.dwg 05/18/2006 05:16:05 PM CST

<p><b>MKEC</b> ENGINEERING CONSULTANTS 411 N. WEBB ROAD WICHITA, KS. 67206 316 - 684 - 9600</p>	<p><b>151 ST STREET WEST IMPROVEMENTS</b> <b>1/2 MILE NORTH OF KELLOGG TO MAPLE</b></p>	
	<p>PROJECT NAME</p>	
	<p><b>TRAFFIC CONTROL PLAN AND NOTES</b></p>	
	<p>SHEET TITLE</p>	
<p>JRA DESIGN BY:</p>	<p>DPG DRAWN BY:</p>	<p>JRA CHECKED BY:</p>
<p>MAY 2006 DATE</p>	<p>05746 JOB NO.</p>	<p>8 / 18 SHEET/OF</p>