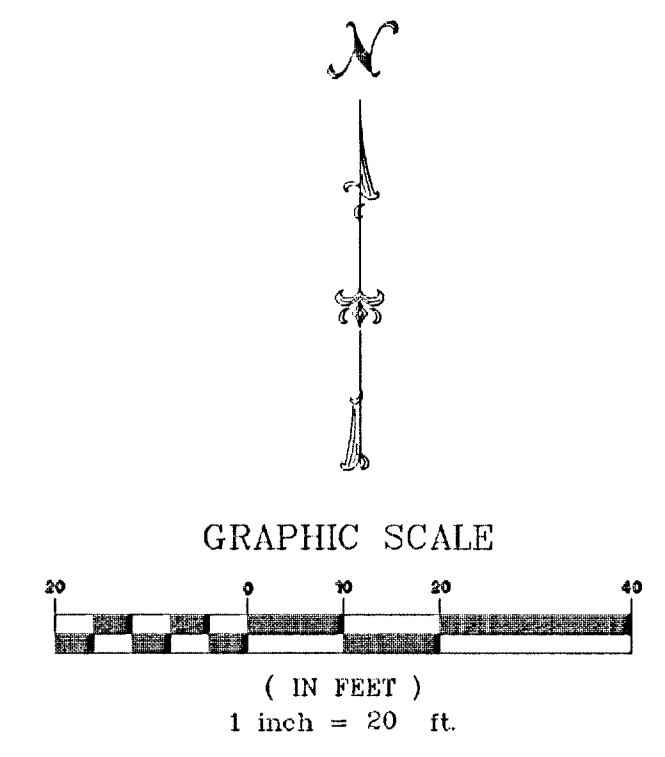
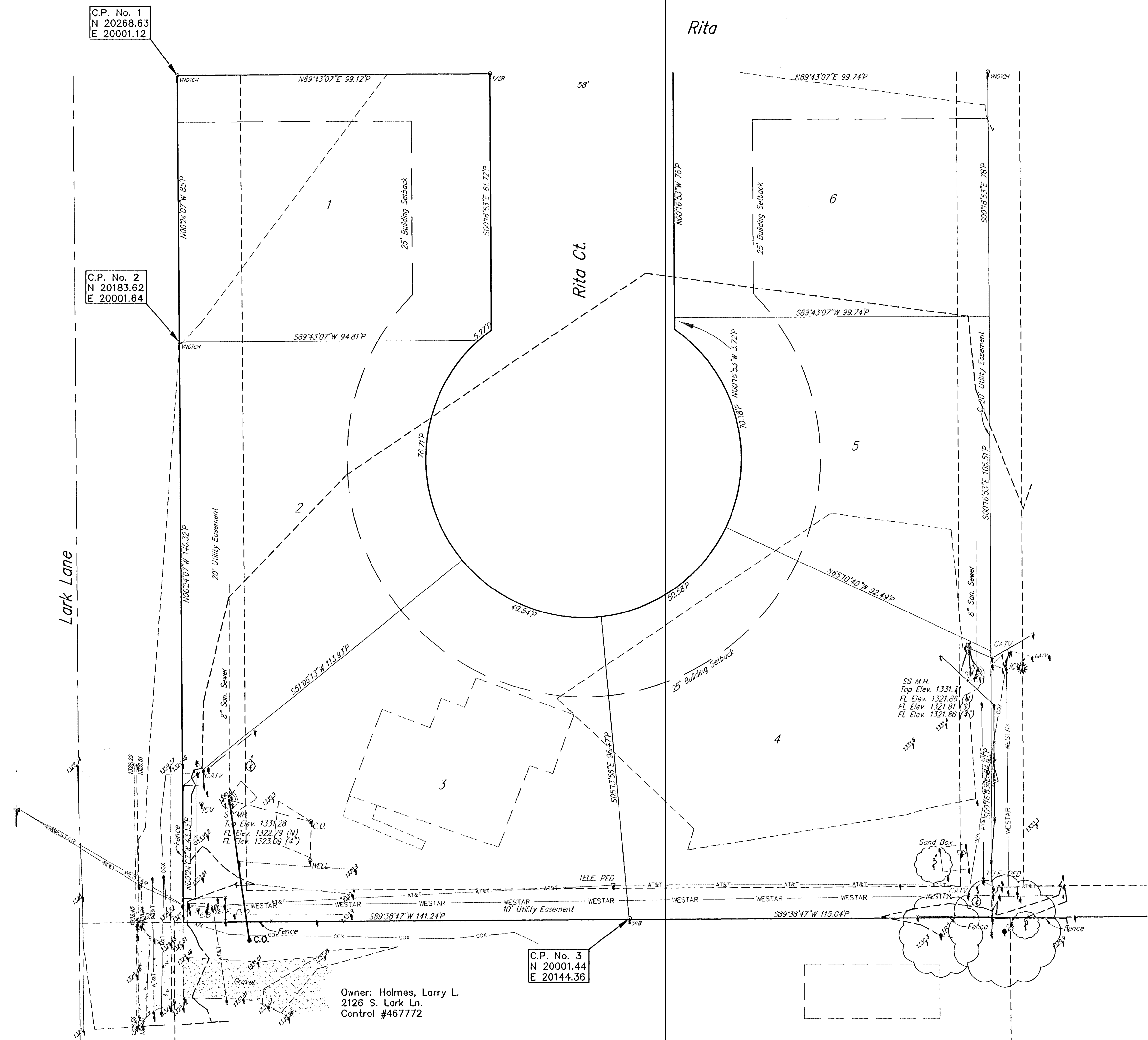


DESIGN SURVEY

SANITARY SEWER

Lindsay's Orchard Addition Wichita, Kansas



BENCHMARK:
Square Cut on Top of Curb West of the SW Corner of Lot 3, Block 2, Lindsay's Orchard Addition, Wichita, Sedgwick County, Kansas.
Elev. = 1328.94

- LEGEND**
- G = GAS MAIN
 - W = WATER MAIN
 - SS = SANITARY SEWER
 - SWS = STORM WATER SEWER
 - UGE = UNDER GROUND ELECTRIC
 - UGT = UNDER GROUND TELEPHONE
 - B.M. BENCH MARK
 - TELE. PED TELEPHONE PEDESTAL
 - C.O. CLEAN OUT
 - CATV CABLE TELEVISION PEDESTAL
 - E.B. ELECTRIC BOX
 - H.L.P. HIGH LINE POLE
 - WELL WATER WELL
 - SS M.H. SANITARY SEWER MANHOLE
 - ICV IRRIGATION CONTROL VALVE

NOTE:
Location of all utilities shown on this drawing, reflect the best information available, consisting of field observation only. Before completing any final design or beginning any excavation on this site, contact the appropriate utility companies for verification of the utility locations.

Kansas One-Call 687-2470

Savoy Company, P.A.
Land Surveyors
811 (316) 265-0000
FAX (316) 265-0222
535 S. Emporia, Suite 104, Wichita, KS 67202 www.savoyco.com

PROJECT NO. 060206698 G

4 AUGUST 06

Owner: Holmes, Larry L.
2128 S. Lark Ln.
Control #467772

C.P. No. 3
N 20001.44
E 20144.38

HORIZONTAL CONTROL POINTS		
C.P. NO. 1	N 20268.63 E 20001.12	V-Notch in Sidewalk, NW Cor. Lot 1, Blk 2, Lindsay's Orchard Add.
C.P. NO. 2	N 20183.62 E 20001.64	V-Notch in Sidewalk, SW Cor. Lot 1, Blk 2, Lindsay's Orchard Add.
C.P. NO. 3	N 20001.44 E 20144.38	SRB Pin Found, SE Cor. Lot 3, Blk 2, Lindsay's Orchard Add.

C.O.W. PROJ. NO.: 468 84110 (622230)

CERTIFIED ENGINEERING DESIGN, P.A.

CED 810 WEST DOUGLAS, SUITE C WICHITA, KANSAS 67203
PH: (316) 262-8808
FAX: (316) 262-1689

SHEET 2
TOTAL 5