

- LEGEND**
- G = GAS MAIN
 - W = WATER MAIN
 - SS = SANITARY SEWER
 - SWS = STORM WATER SEWER
 - UGE = UNDER GROUND ELECTRIC
 - UGT = UNDER GROUND TELEPHONE
 - B.M. = BENCH MARK
 - TELE. PED. = TELEPHONE PEDESTAL
 - C.O. = CLEAN OUT
 - CATV = CABLE TELEVISION PEDESTAL
 - E.B. = ELECTRIC BOX
 - H.P. = HIGH LINE POLE
 - WELL = WATER WELL
 - SS M.H. = SANITARY SEWER MANHOLE
 - CV = IRRIGATION CONTROL VALVE

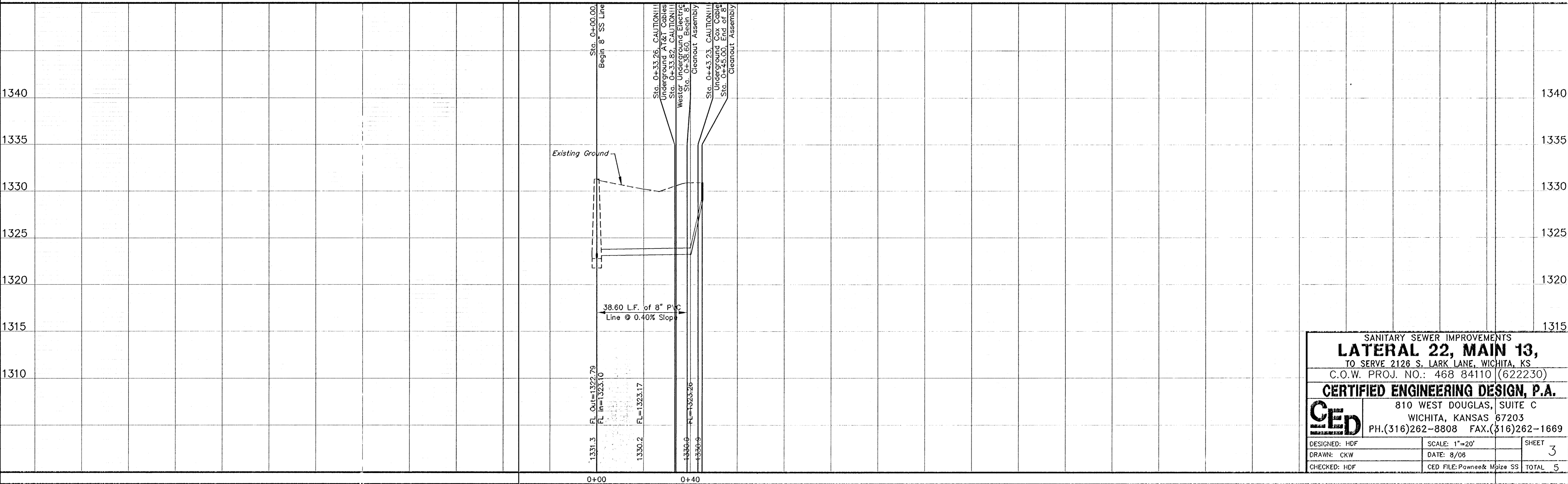
BENCHMARK:
 Square Cut on Top of Curb West of the SW Corner of Lot 3, Block 2, Lindsay's Orchard Addition, Wichita, Sedgewick County, Kansas.
 Elev.=1328.94

HORIZONTAL CONTROL POINTS		
C.P. NO. 1	N 20268.63	V-Notch in Sidewalk, NW Cor. Lot E 20001.12 1, Blk 2, Lindsay's Orchard Add.
C.P. NO. 2	N 20183.62	V-Notch in Sidewalk, SW Cor. Lot E 20001.64 1, Blk 2, Lindsay's Orchard Add.
C.P. NO. 3	N 20001.44	SRB Pin Found, SE Cor. Lot 3, E 20144.36 Blk 2, Lindsay's Orchard Add.

UTILITIES SHOWN REPRESENT THE BEST INFORMATION AVAILABLE FOR DESIGN. ADDITIONAL UTILITIES MAY BE PRESENT ON THIS PROJECT. THE CONTRACTOR SHALL BE RESPONSIBLE FOR DETERMINING THE EXACT LOCATION, DEPTH AND SIZE OF ALL UNDERGROUND UTILITIES PRIOR TO CONSTRUCTION. THE CONTRACTOR SHALL BE LIABLE FOR ANY DAMAGE CAUSED BY THE FAILURE TO DO SO.

Sta. 0+00.00, Begin 8" PVC SS Line @ Existing SS MH. Contractor Shall Core MH Wall and Seal New 8" PVC Line to MH Wall with Quick-Set Hydraulic cement. all MH Imperfections w/ sold Cement. Rim Elev.=1331.28
 Existing FL Out 8"(N) Elev.=1322.79
 Existing FL In 4"(SE) Elev.=1323.09
 Proposed FL In 8"(S) Elev.=1323.10
 N 20038.97
 E 20017.51

SANITARY SEWER LINE



SANITARY SEWER IMPROVEMENTS
LATERAL 22, MAIN 13,
 TO SERVE 2126 S. LARK LANE, WICHITA, KS
 C.O.W. PROJ. NO.: 468 84110 (622230)

CERTIFIED ENGINEERING DESIGN, P.A.

810 WEST DOUGLAS, SUITE C
 WICHITA, KANSAS 67203
 PH.(316)262-8808 FAX.(316)262-1669

DESIGNED: HDF	SCALE: 1"=20'	SHEET 3
DRAWN: CKW	DATE: 8/08	
CHECKED: HDF	CED FILE: Pawnee & Mize SS	TOTAL 5