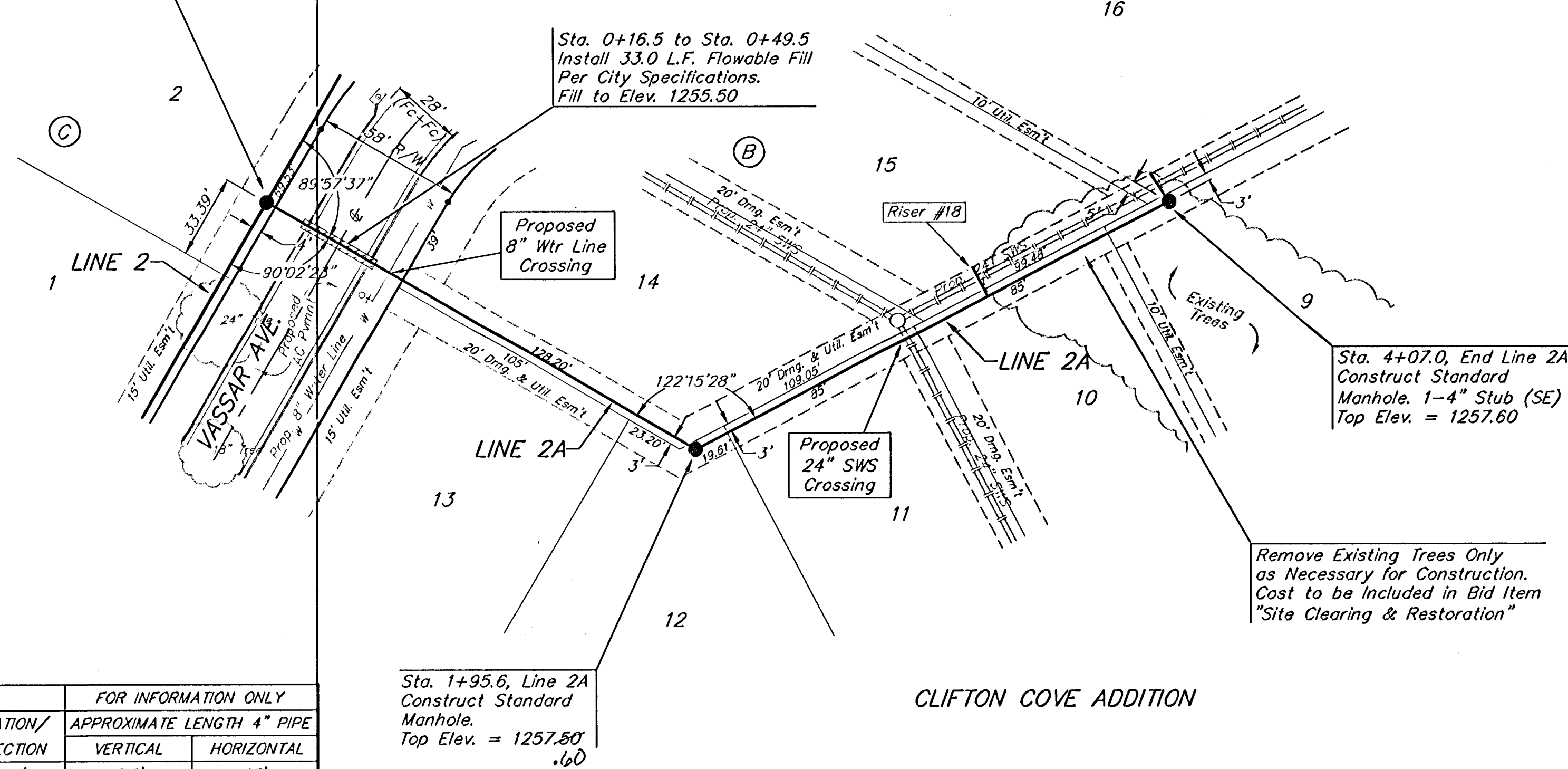


BENCHMARK:
 Arkansas River bridge & 63rd St. S. City of
 Wichita Benchmark Disc. SW Cor. of bridge,
 top of hubguard, 500'± E. of Grave.
 Elev. = 1269.95 NGVD29 (per City record)
 Brass plate on the NE wingwall of Arkansas
 River bridge & 63rd St. S.
 Elev. = 1267.48 NGVD29 (per County record)

Sta. 0+00, Begin Line 2A
 = Sta. 3+53.9, Line 2

CLIFTON COVE ADDITION

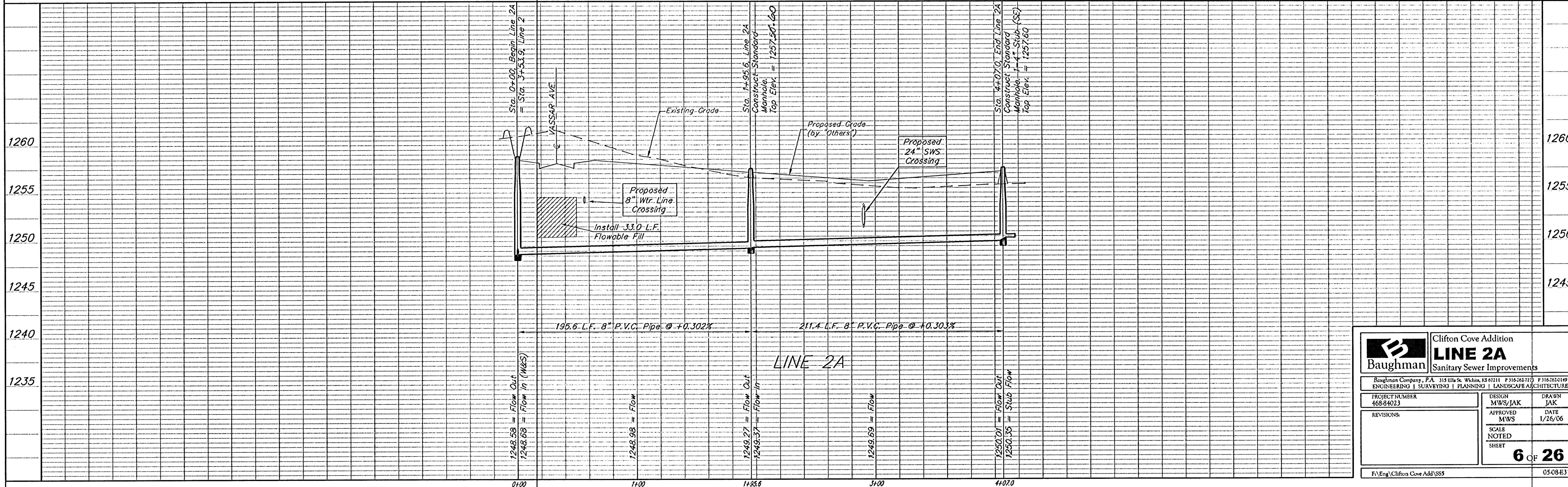
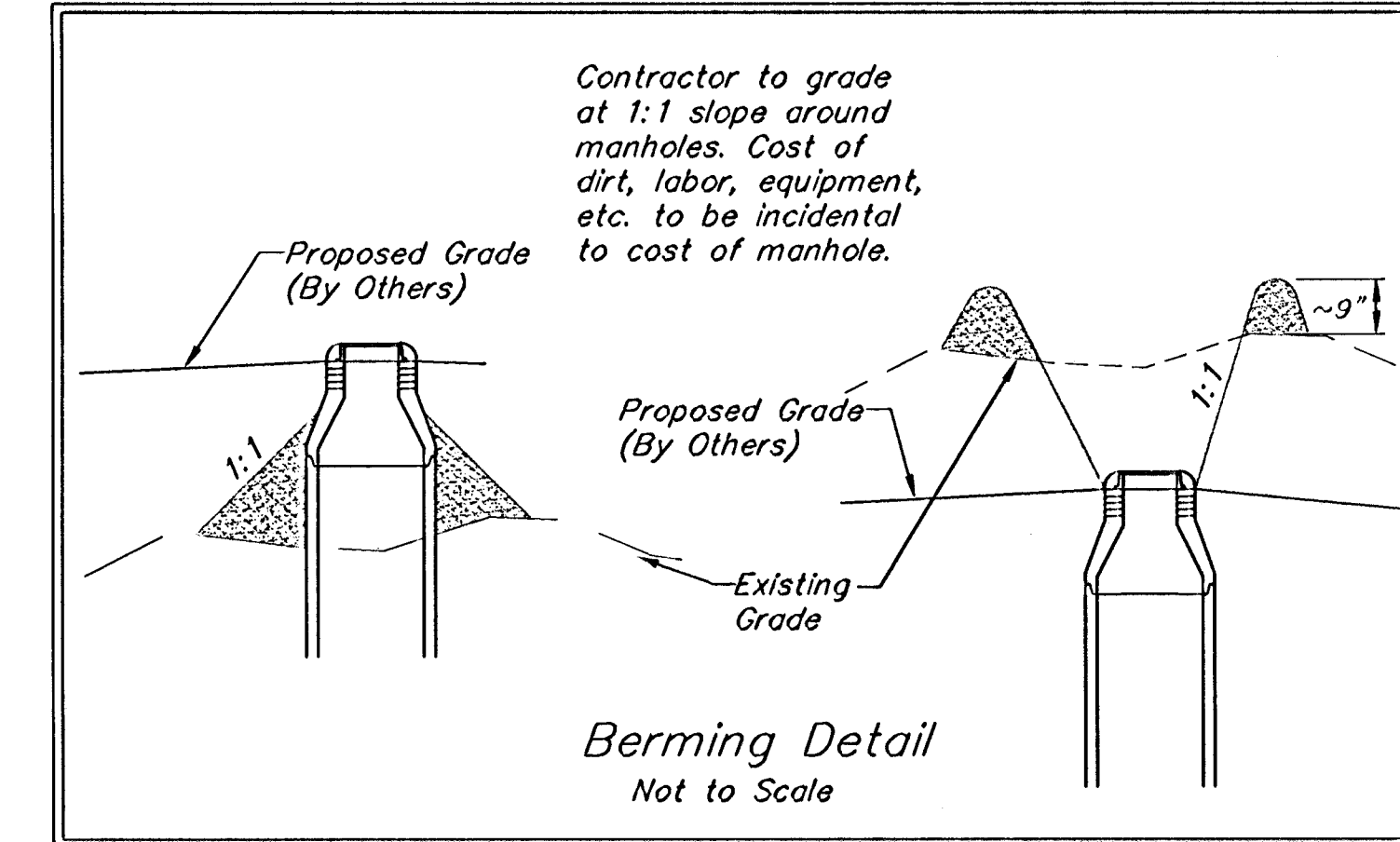


SCALE:
 1" = 40' HORIZONTAL
 1" = 5' VERTICAL
 • = IRON

SEWER SERVICE TABLE

NUMBER	TYPE	LOCATION			STATION/ DIRECTION	FOR INFORMATION ONLY	
		LOT NO.	BLOCK NO.	LINE NO.		APPROXIMATE LENGTH 4" PIPE	VERTICAL
18	8" X 4" Tee Saddle	15	B	2A	3+26/Lt.	2.5'	13'

NOTE: Vertical Riser Pipe shall be extended to 2' minimum above ground water elevation and 4' maximum below proposed ground elevation.



Baughman Clifton Cove Addition
LINE 2A
 Sanitary Sewer Improvements

Baughman Company, P.A. 315 Ellis St. Wichita, KS 67211 P 316.262.7173 F 316.262.0149
 ENGINEERING | SURVEYING | PLANNING | LANDSCAPE ARCHITECTURE

PROJECT NUMBER 46884023	DESIGN MWS/JAK	DRAWN JAK
APPROVED MWS	DATE 1/26/06	
REVISIONS	SCALE NOTED	SHEET

6 OF 26

F:\Eng\Clifton Cove Add\SS5 0508-E316