

GENERAL NOTES:

1. Contractor will be required to provide notice to utility companies a minimum of forty-eight (48) hours prior to any excavation, as follows:

Kansas One-Call 687-2470

The Contractor must notify the following in case of an emergency:

Cox Communications 262-4270
 Kansas Gas Service 1-888-482-4950
 Westar Energy 383-8650
 Aquila Energy 1-800-303-0357
 SBC 268-2245
 City of Wichita Water Dept. 268-4563
 City of Wichita Sewer Maint. 268-4024
 City of Wichita Storm Sewer Maint. 268-4090
 City of Wichita Traffic Maint. 268-4034
 Conoco Phillips Pipeline 1-877-267-2290
 Southern Star Pipeline 529-6600
 Kinder Morgan Pipeline 1-888-844-5658

2. Utility service lines, poles, valve boxes, meters, and etcetera are to be adjusted as necessary by others prior to construction unless the plans specifically call for their adjustment by the Contractor or unless the plans specifically identify a utility to be adjusted by its owner during construction. Existing utilities and their location, as shown on the plans, represent the best information obtainable for design. The Contractor will be required to work around existing utilities within the right-of-way which do not conflict with proposed construction.

3. Rubble from the removal of miscellaneous structures and excess excavation which is to be wasted shall be disposed of on sites to be provided by the Contractor. These sites shall be approved by the Engineer as to suitability, appearance and site location. Locations, in the opinion of the Engineer, that will leave an unsightly appearance will not be approved. All disposal sites must be approved by the Kansas Department of Health and Environment. Material either stockpiled or disposed of in a flood plain would require a Kansas State Board of Agriculture permit. Any material dumped in waters of the United States or wetlands is subject to U.S. Corps of Engineers permitting regulations. Any material buried or stockpiled beyond approved construction limits would require additional archaeological investigations unless buried in a previously approved borrow location.

4. Trees and shrubs in public right-of-way which are in direct conflict with proposed new construction shall be removed by the Contractor ONLY with the Developer or Baughman Company approval. Trees and shrubs which are not in direct conflict with proposed new construction shall be saved and protected from damage.

5. The Contractor shall give all property owners and/or tenants of developed property abutting the construction of this project a minimum of ten (10) days notice prior to start of construction.

6. The Contractor shall be responsible for preserving property irons. The Contractor will be required to re-establish any property irons which are damaged or destroyed by his construction operations. Such irons shall be re-established by a licensed land surveyor in accordance with state laws.

7. All existing and proposed erosion control measures including silt fencing, erosion control mat, straw bales, inlet barriers, and const. entrance shall be maintained throughout construction by the contractor and until project is accepted by the City of Wichita. The on-site engineer shall complete weekly reports on the status of erosion control measures. The contractor shall be required to comply with maintenance and/or replacement of erosion control measures as determined by the on-site engineer until project is accepted by City of Wichita. Maintenance and/or replacement of erosion control measures to be paid by L.S. bid item "Site Clearing & Restoration."

8. Contractor borrow is available on-site. Contractor shall contact Engineer for borrow locations.

9. The developer for this project is Jay Russell, (316) 722-2417

10. The contractor shall adjust valve boxes as necessary to match proposed grade. Cost to be included in bid item, "Site Clearing & Restoration."

11. All areas disturbed during construction shall be seeded at 300 lbs./acre with Rye Grass immediately following construction in that area. Contractor shall prepare ground per City Specifications.

STREET PAVING FOR BURTON & INCIDENTAL STORM WATER SEWER
 to serve

SHADOW WOODS ADDITION - PH. 5 & THE WOODS ADDITION
 (Lots 1-3, Block B)

City View from the north line of Lot 37, Block C, north to the northwest line of the plat
 Burton, from the east line of City View, east to the southeasterly line of Lot 26, Block C
 Texas Cir. from the north line of Burton, northeasterly to and including cul-de-sac
 Burton Ct. from the south line of Burton, south and east to and including the cul-de-sac

CITY OF WICHITA, KANSAS

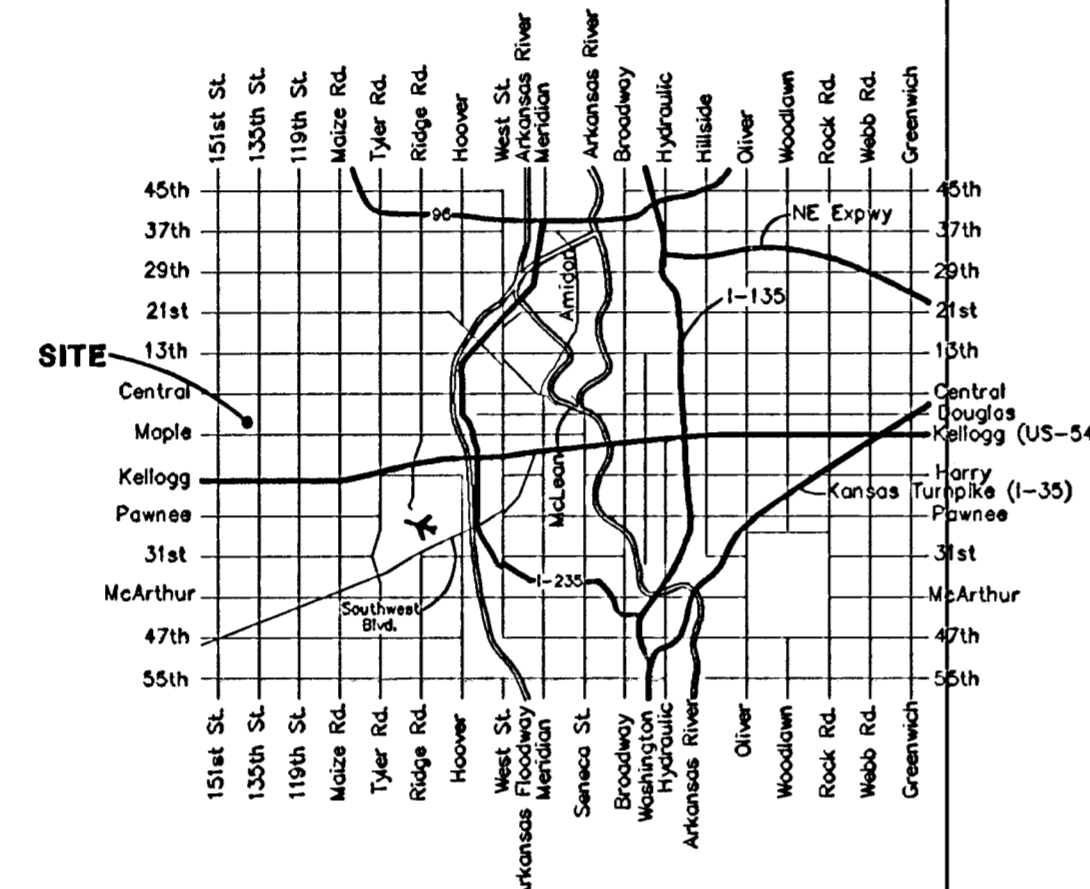
James L. Armour, P.E. City Engineer

Project Number

472-84060

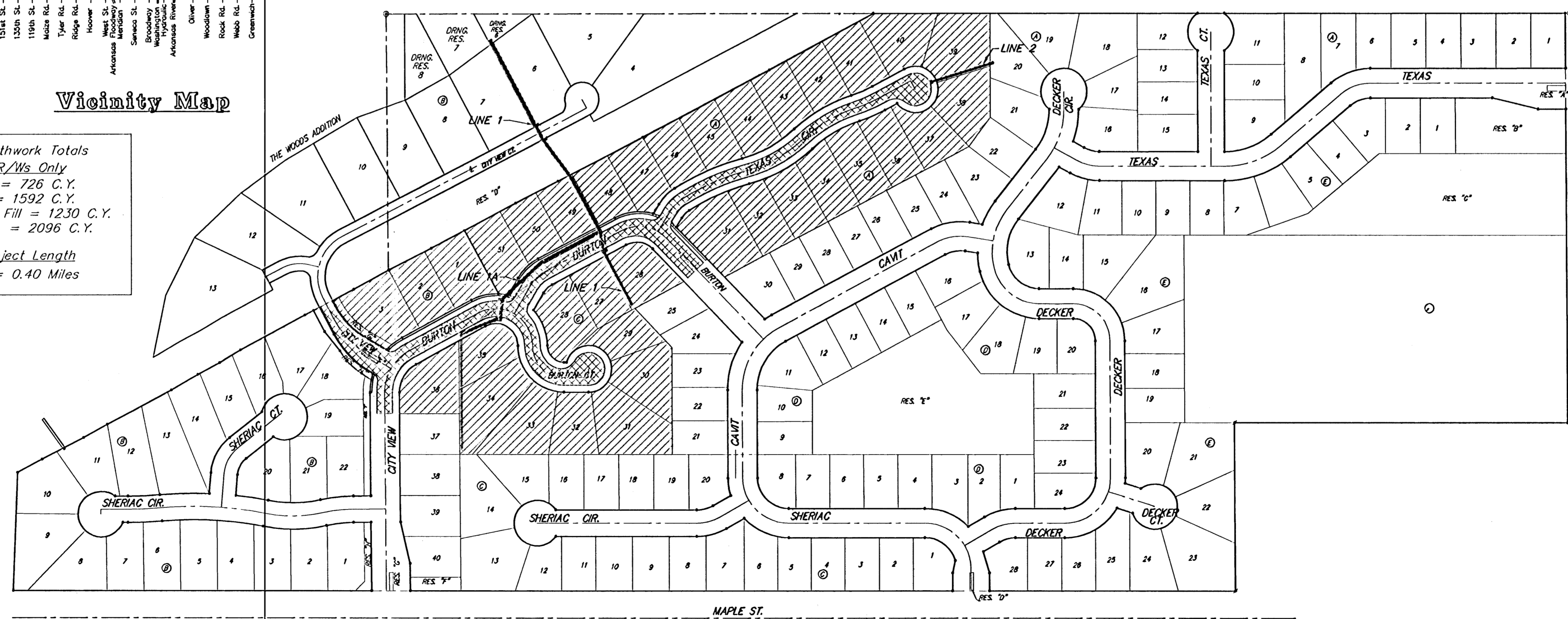
O.C.A. Number:

765982



Vicinity Map

Project Earthwork Totals
 Street R/Ws Only
 Excavation = 726 C.Y.
 Loose Fill = 1592 C.Y.
 Compacted Fill = 1230 C.Y.
 Borrow Exc. = 2096 C.Y.
 Total Project Length
 2149 L.F. = 0.40 Miles



Benefit District: [Hatched Box]
Proposed Streets: [Cross-hatched Box]

Benchmarks

City of Wichita Benchmark Disc,
 Top of curb at West end of curb
 return, Northwest corner of
 intersection of City View and
 Sheriac Cir. in Shadow Woods
 Addition.
 Elev. = 199.26 (City Datum)
 NGVD29

City of Wichita Benchmark Disc,
 Top of curb at North end of curb
 return, Northwest corner of
 intersection of Burton and Cavit in
 Shadow Woods Addition.
 Elev. = 193.21 (City Datum)
 NGVD29

Sheet Index

Title Sheet	1
35' Pavement Detail	2
29' Pavement Detail	3
Sign Detail	4
Valley Gutter Details	5
Burton	6-7
Burton Ct.	8
City View	9
Texas Cir.	10-11
SWS Line 1	12-13
SWS Line 1A	14
SWS Line 2	15
Std. Type 1A Single Inlet Detail	16
Std. Type 1A Double Inlet Detail	17
Special Yard Inlet Detail	18
MH Ring & Cover Detail	19
Esmt. Grading & Erosion Control Plan	20
Erosion Control Details	21-24
Street X-Sections	25-35
Copy of Plats	36-37

