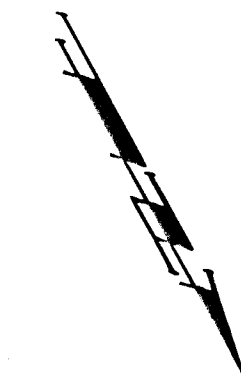


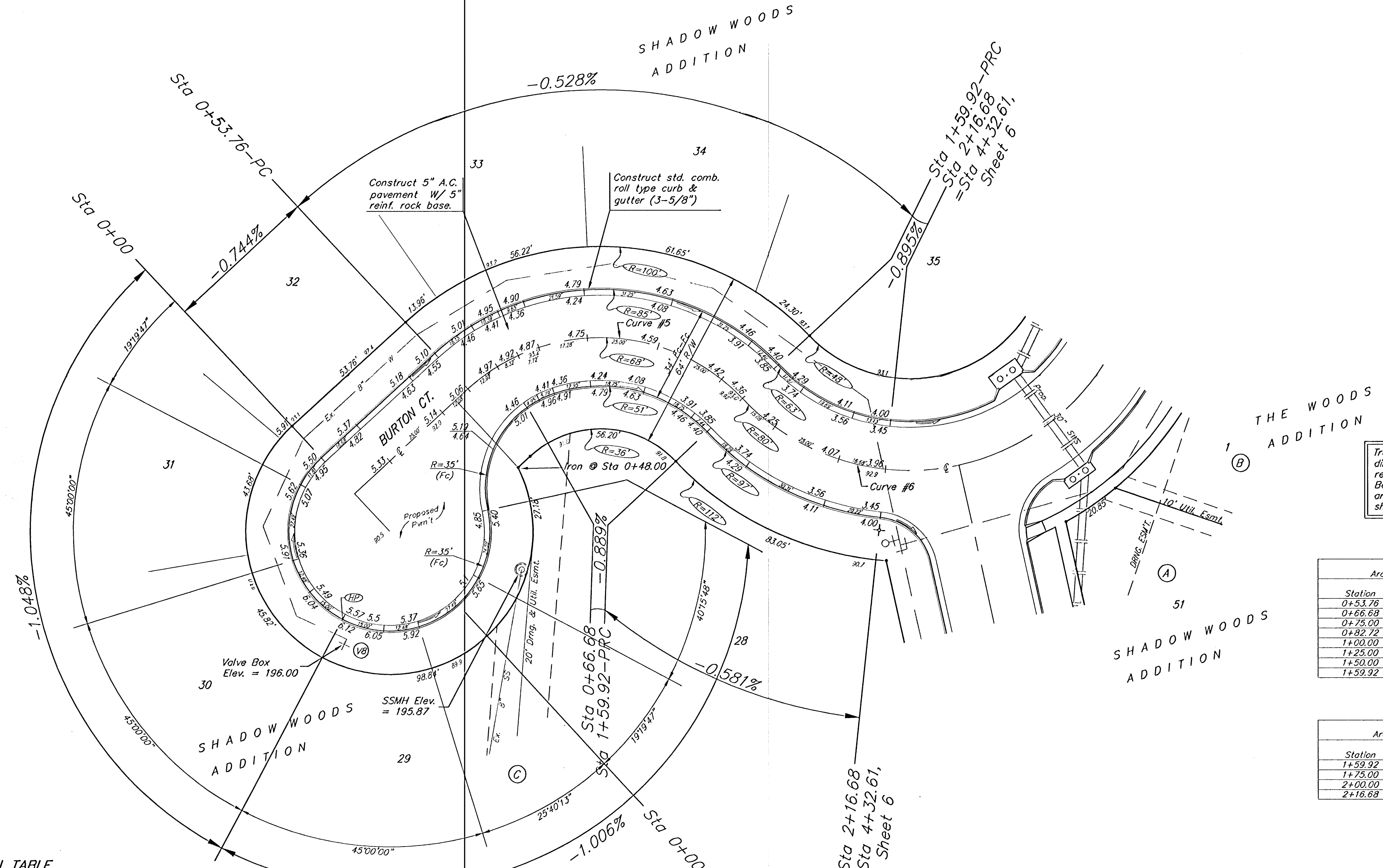
BENCHMARKS:

CITY OF WICHITA BENCHMARK DISC, TOP OF CURB AT WEST END OF CURB RETURN, NORTHWEST CORNER OF INTERSECTION OF CITY VIEW AND SHERIAC CIR. IN SHADOW WOODS ADDITION.
ELEV. = 199.26 (CITY DATUM)

CITY OF WICHITA BENCHMARK DISC, TOP OF CURB AT NORTH END OF CURB RETURN, NORTHWEST CORNER OF INTERSECTION OF BURTON AND CAVIT IN SHADOW WOODS ADDITION.
ELEV. = 193.21 (CITY DATUM)



Scale: 1" = 20'
• = Iron



Trees and shrubs in public right-of-way which are in direct conflict with proposed new construction shall be removed by the Contractor ONLY with the Developer or Baughman Company approval. Trees and shrubs which are not in direct conflict with proposed new construction shall be saved and protected from damage.

Curve #5
Curve Data Based on Centerline
Rad. = 68' Delta = 89°26'15" Tangent = 67.34'
Arc = 106.16' L.C. = 95.69' Def/Ft. = 25.27435 Min.

Station	Arc	FACE CHORD LENGTHS		Defl.	T. Defl.
		B' Lt.	B' Rt.		
0+53.76	-	-	-	0°00'00"	0°00'00"
0+66.68	12.92'	17.64'	8.16'	5°26'33"	5°26'33"
0+75.00	8.32'	11.37'	5.26'	3°30'17"	8°56'50"
0+82.72	7.72'	10.55'	4.88'	3°15'07"	12°11'57"
1+00.00	17.28'	23.57'	10.90'	7°16'44"	19°28'41"
1+25.00	25.00'	33.99'	15.72'	10°31'52"	30°00'53"
1+50.00	25.00'	33.99'	15.72'	10°31'51"	40°32'24"
1+59.92	9.92'	13.55'	6.27'	4°10'43"	44°43'07"

Curve #6
Curve Data Based on Centerline
Rad. = 80' Delta = 40°39'6" Tangent = 29.63'
Arc = 56.76' L.C. = 55.58' Def/Ft. = 21.48608 Min.

Station	Arc	FACE CHORD LENGTHS		Defl.	T. Defl.
		B' Lt.	B' Rt.		
1+59.92	-	-	-	0°00'00"	0°00'00"
1+75.00	15.08'	10.35'	19.76'	5°24'01"	5°24'01"
2+00.00	25.00'	17.12'	32.68'	8°57'09"	14°21'10"
2+16.68	16.68'	11.45'	21.85'	5°58'23"	20°19'33"

WATER VALVE LOCATION TABLE

VALVE NUMBER	BASELINE STATION	OFFSET DISTANCE	OFFSET DIRECTION
V8	0+36.70	36'	Rt.

P. V.I.
Elev. = 196.20
30' V.C.

Paving contractor will be responsible to operate all water valves on the project, in the presence of the inspector, to ensure accessibility to the valves, and that all valves are left in the "ON" position when the project is completed.

Trees and shrubs in public right-of-way which are in direct conflict with proposed new construction shall be removed by the Contractor ONLY with the Developer or Baughman Company approval. Trees and shrubs which are not in direct conflict with proposed new construction shall be saved and protected from damage.

NOTE: ROLL TYPE CURB & GUTTER TO BE CONSTRUCTED ON THE PAVEMENT SHOWN ON THIS SHEET. TOP OF CURB ELEVATIONS ARE GIVEN FOR FULL HEIGHT CURB.

Baughman SHADOW WOODS ADD. - PH V
Burton Ct.
Street Paving

Baughman Company, P.A. 315 E. St. Wichita, KS 67211 F 316-263-7271 F 316-263-0149
ENGINEERING | SURVEYING | PLANNING | LANDSCAPE ARCHITECTURE

PROJECT NUMBER 412-94060	DESIGN AEG	DRAWN JEB
REVISIONS:	APPROVED	DATE 6-21-06
	SCALE Noted	
	SHEET	8 OF 37

E:\eng\Shadow Woods Addition\Phase 5\ur1.dwg 06-01-E467