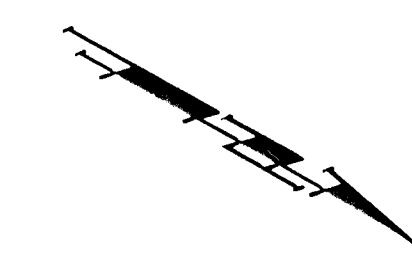


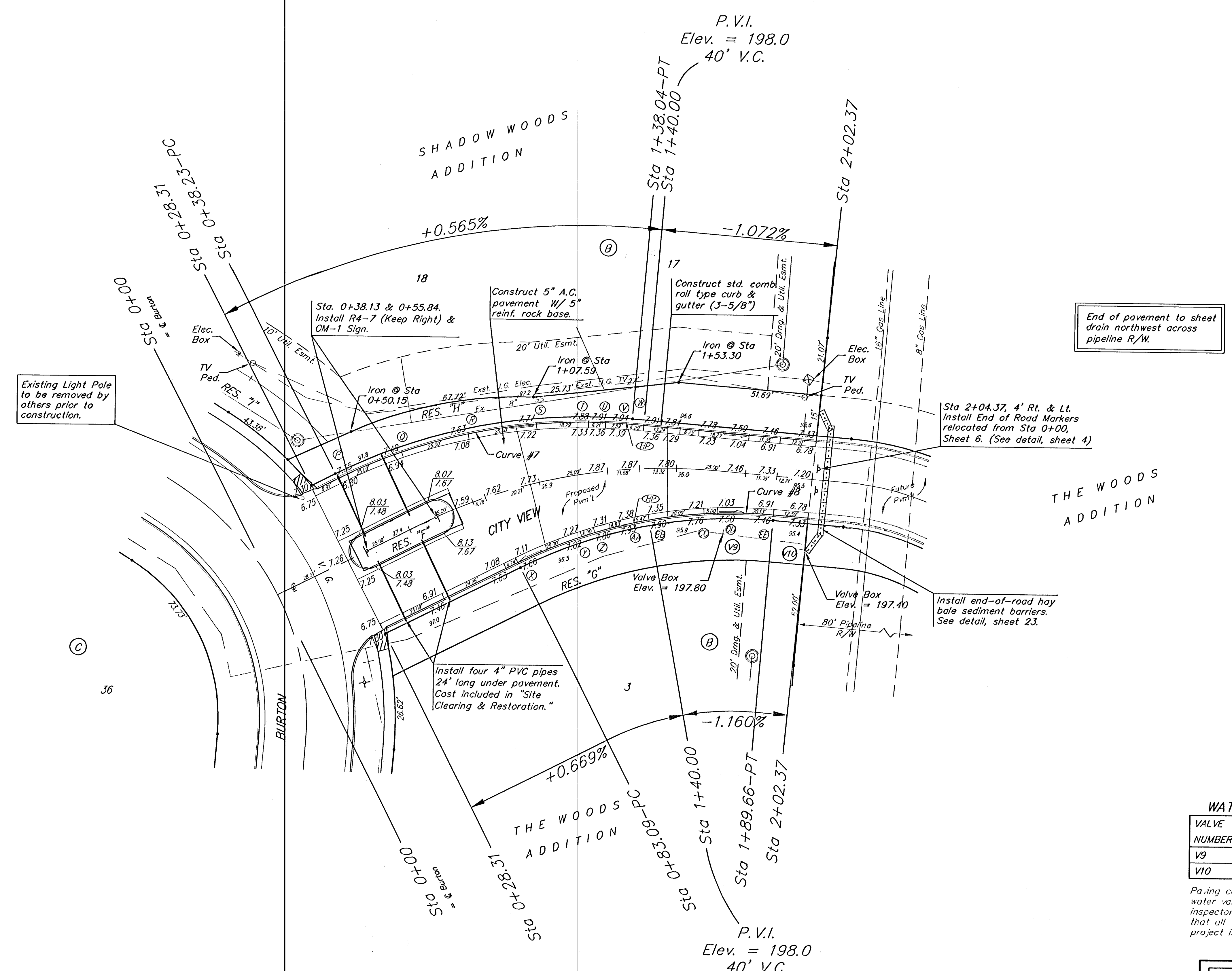
**BENCHMARKS:**

CITY OF WICHITA BENCHMARK DISC, TOP OF CURB AT WEST END OF CURB RETURN, NORTHWEST CORNER OF INTERSECTION OF CITY VIEW AND SHERIAC CIR. IN SHADOW WOODS ADDITION.  
ELEV. = 199.26 (CITY DATUM)

CITY OF WICHITA BENCHMARK DISC, TOP OF CURB AT NORTH END OF CURB RETURN, NORTHWEST CORNER OF INTERSECTION OF BURTON AND CAVIT IN SHADOW WOODS ADDITION.  
ELEV. = 193.21 (CITY DATUM)



Scale: 1" = 20'  
• = Iron



End of pavement to sheet drain northwest across pipeline R/W.

Sta 2+04.37, 4' Rt. & Lt. Install End of Road Markers relocated from Sta 0+00, Sheet 6. (See detail, sheet 4)

Install end-of-road hay bale sediment barriers. See detail, sheet 23.

Existing Light Pole to be removed by others prior to construction.

Install four 4" PVC pipes 24' long under pavement. Cast included in "Site Clearing & Restoration."

Construct 5" A.C. pavement W/ 5" reinf. rock base.

Construct std. comb roll type curb & gutter (3-5/8")

**WATER VALVE LOCATION TABLE**

VALVE NUMBER	BASELINE STATION	OFFSET DISTANCE	OFFSET DIRECTION
V9	1+72.09	22'	Rt.
V10	2+02.09	24'	Rt.

Paving contractor will be responsible to operate all water valves on the project, in the presence of the inspector, to ensure accessibility to the valves, and that all valves are left in the "ON" position when the project is completed.

Curve #7  
Curve Data Based on Face of Curve  
Rad. = 198' Delta = 31°41'31" Tangent = 56.20'  
Arc = 109.51' L.C. = 108.13' Def/Ft. = 8.68193 Min.

Station	Arc	FACE CHORD LENGTHS	Def	T. Def.
P	-	0'00.00"	0'00.00"	0'00.00"
Q	25.00'	26.00'	3'37.03"	3'37.03"
R	25.00'	26.00'	3'37.03"	7'14.06"
S	25.00'	26.00'	3'37.03"	10'51.09"
T	18.79'	19.54'	2'43.08"	13'34.17"
U	6.21'	6.46'	0'53.55"	14'28.12"
V	7.59'	7.90'	1'05.53"	15'34.05"
W	1.92'	2.00'	0'16.40"	15'50.45"

Curve #8  
Curve Data Based on Face of Curve  
Rad. = 172' Delta = 31°41'31" Tangent = 48.82'  
Arc = 95.13' L.C. = 93.93' Def/Ft. = 9.99431 Min.

Station	Arc	FACE CHORD LENGTHS	Def	T. Def.
X	-	0'00.00"	0'00.00"	0'00.00"
Y	25.00'	23.82'	4'09.61"	4'09.61"
Z	4.90'	4.67'	0'48.59"	4'58.50"
AA	14.63'	13.95'	2'26.13"	7'25.03"
BB	5.47'	5.22'	0'54.40"	8'19.43"
CC	20.00'	19.06'	3'19.53"	11'39.56"
DD	5.00'	4.77'	0'49.58"	12'29.34"
EE	20.13'	19.18'	3'21.12"	15'50.46"

Trees and shrubs in public right-of-way which are in direct conflict with proposed new construction shall be removed by the Contractor ONLY with the Developer or Baughman Company approval. Trees and shrubs which are not in direct conflict with proposed new construction shall be saved and protected from damage.

NOTE: ROLL TYPE CURB & GUTTER TO BE CONSTRUCTED ON THE PAVEMENT SHOWN ON THIS SHEET. TOP OF CURB ELEVATIONS ARE GIVEN FOR FULL HEIGHT CURB.

**Baughman** SHADOW WOODS ADD. - PH V  
**City View** Street Paving

Baughman Company, P.A. 315 E. 11th St., Wichita, KS 67211 P.316.262.0149 F.316.262.0149  
ENGINEERING | SURVEYING | PLANNING | LANDSCAPE ARCHITECTURE

PROJECT NUMBER: 472-84060  
DESIGN: AEG  
DRAWN: JEB  
APPROVED: [Signature]  
DATE: 6-21-06

REVISIONS:

SCALE: Noted  
SHEET: 9 OF 37

E:\eng\Shadow Woods Addition\Phase 3\str1.dwg 06/01/06