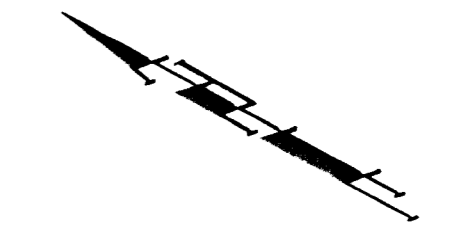


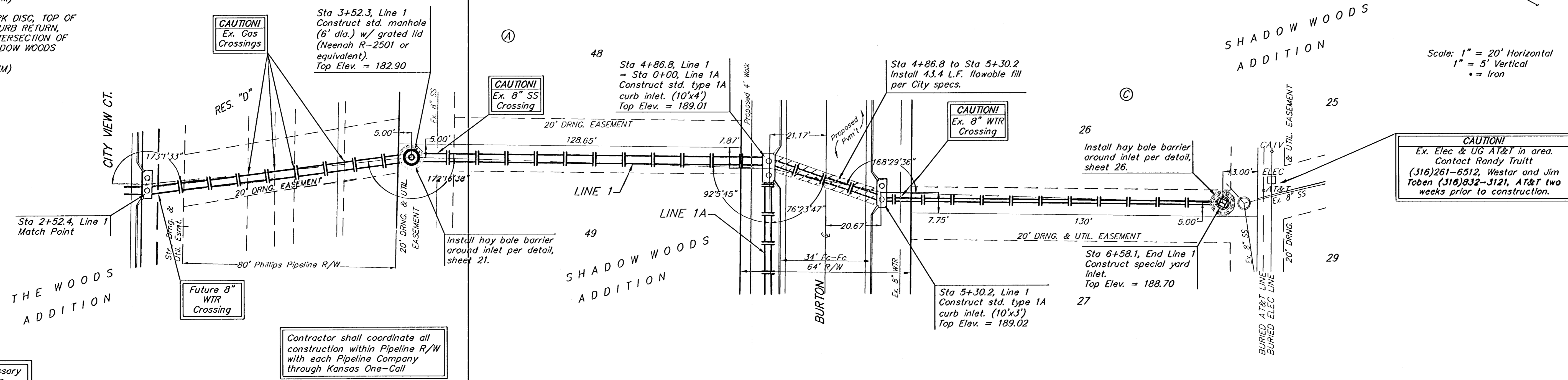
**BENCHMARKS:**

CITY OF WICHITA BENCHMARK DISC, TOP OF CURB AT WEST END OF CURB RETURN, NORTHWEST CORNER OF INTERSECTION OF CITY VIEW AND SHERIAC CIR. IN SHADOW WOODS ADDITION.  
ELEV. = 199.26 (CITY DATUM)

CITY OF WICHITA BENCHMARK DISC, TOP OF CURB AT NORTH END OF CURB RETURN, NORTHWEST CORNER OF INTERSECTION OF BURTON AND CAVIT IN SHADOW WOODS ADDITION.  
ELEV. = 193.21 (CITY DATUM)

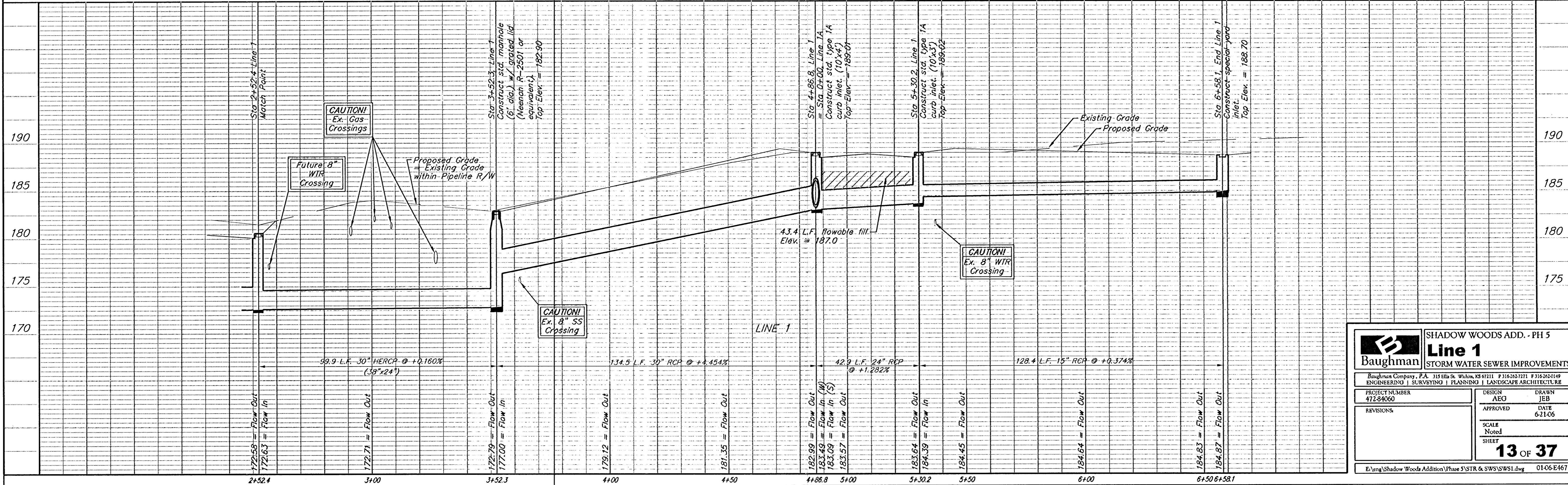


Scale: 1" = 20' Horizontal  
1" = 5' Vertical  
• = Iron



Remove trees only as necessary for storm sewer construction and only with permission of Developer or Baughman Co. Cost of removal to be incidental to lump sum bid item "Site Clearing & Restoration".

Contractor shall coordinate all construction within Pipeline R/W with each Pipeline Company through Kansas One-Call



		SHADOW WOODS ADD. - PH 5	
		<b>Line 1</b>	
STORM WATER SEWER IMPROVEMENTS		Baughman Company, P.A. 315 Ellis St. Wichita, KS 67101 P 316-262-2111 F 316-262-0149 ENGINEERING   SURVEYING   PLANNING   LANDSCAPE ARCHITECTURE	
PROJECT NUMBER 472-84060	DESIGN AEO	DRAWN JEB	APPROVED DATE 6-21-06
REVISIONS	SCALE Noted SHEET <b>13 OF 37</b>		
E:\eng\Shadow Woods Addition\Phase 5\STR & SWS\SWS1.dwg		0106-E467	