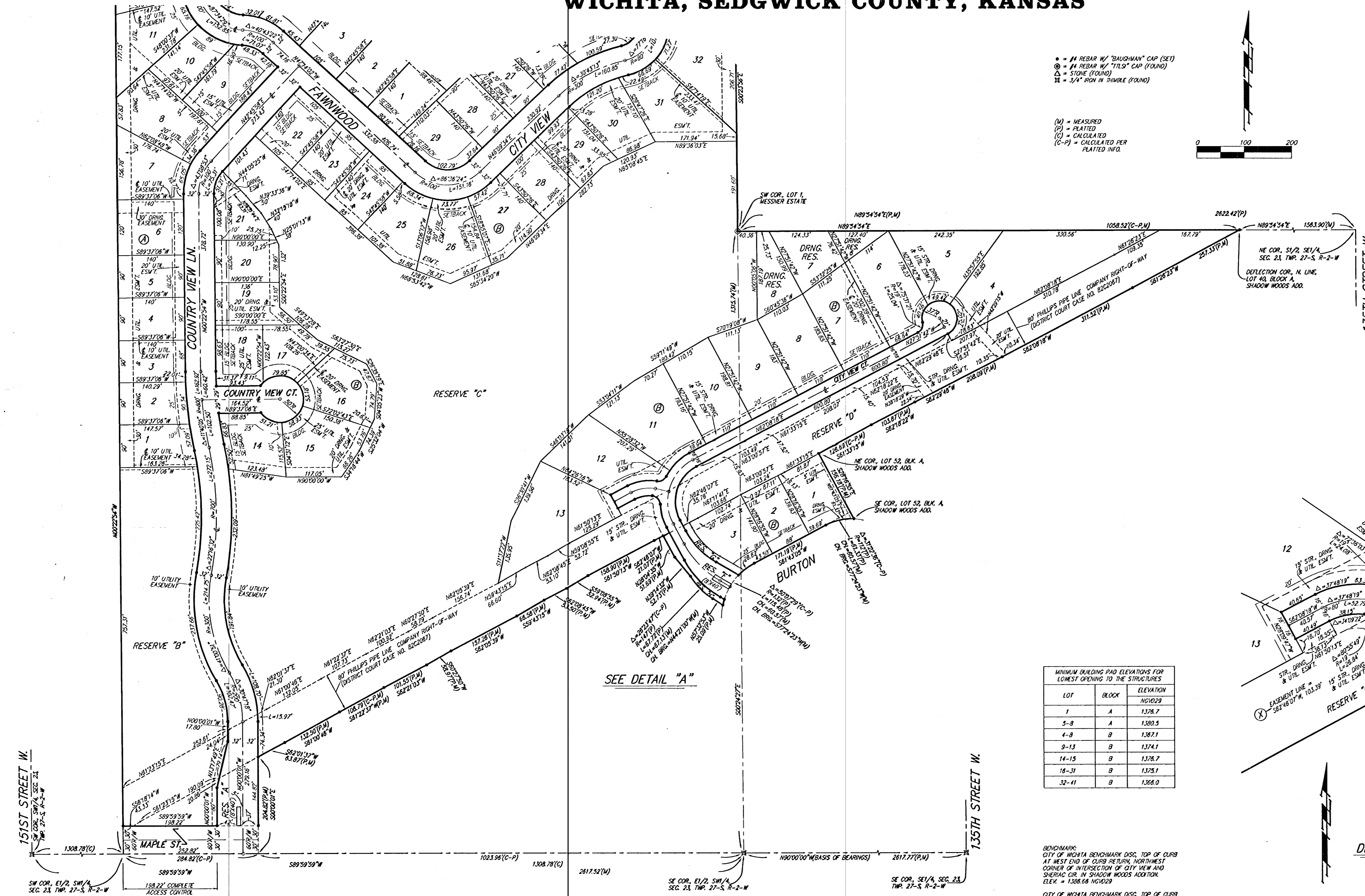
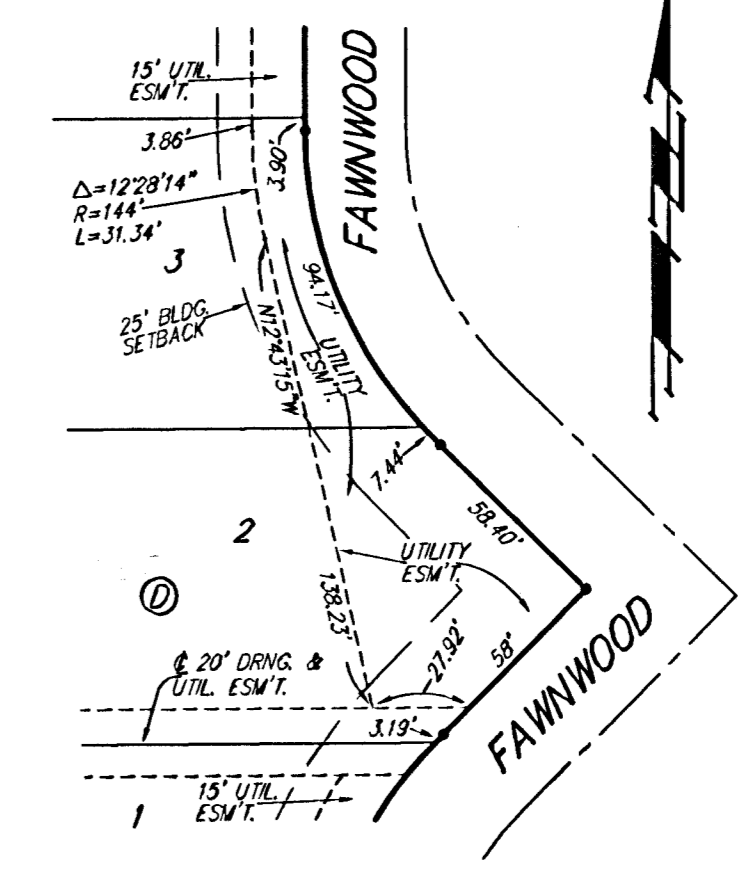
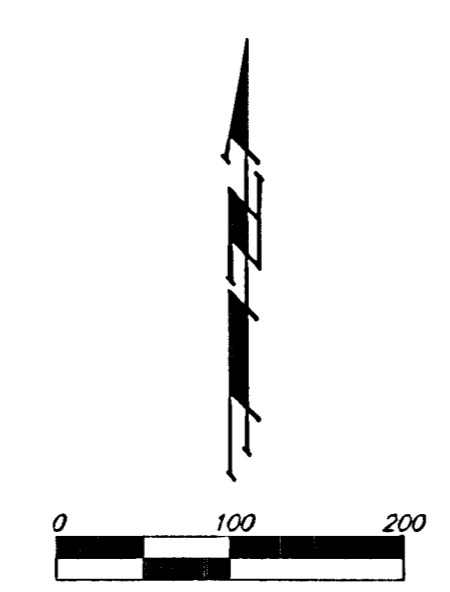


# THE WOODS ADDITION WICHITA, SEDGWICK COUNTY, KANSAS

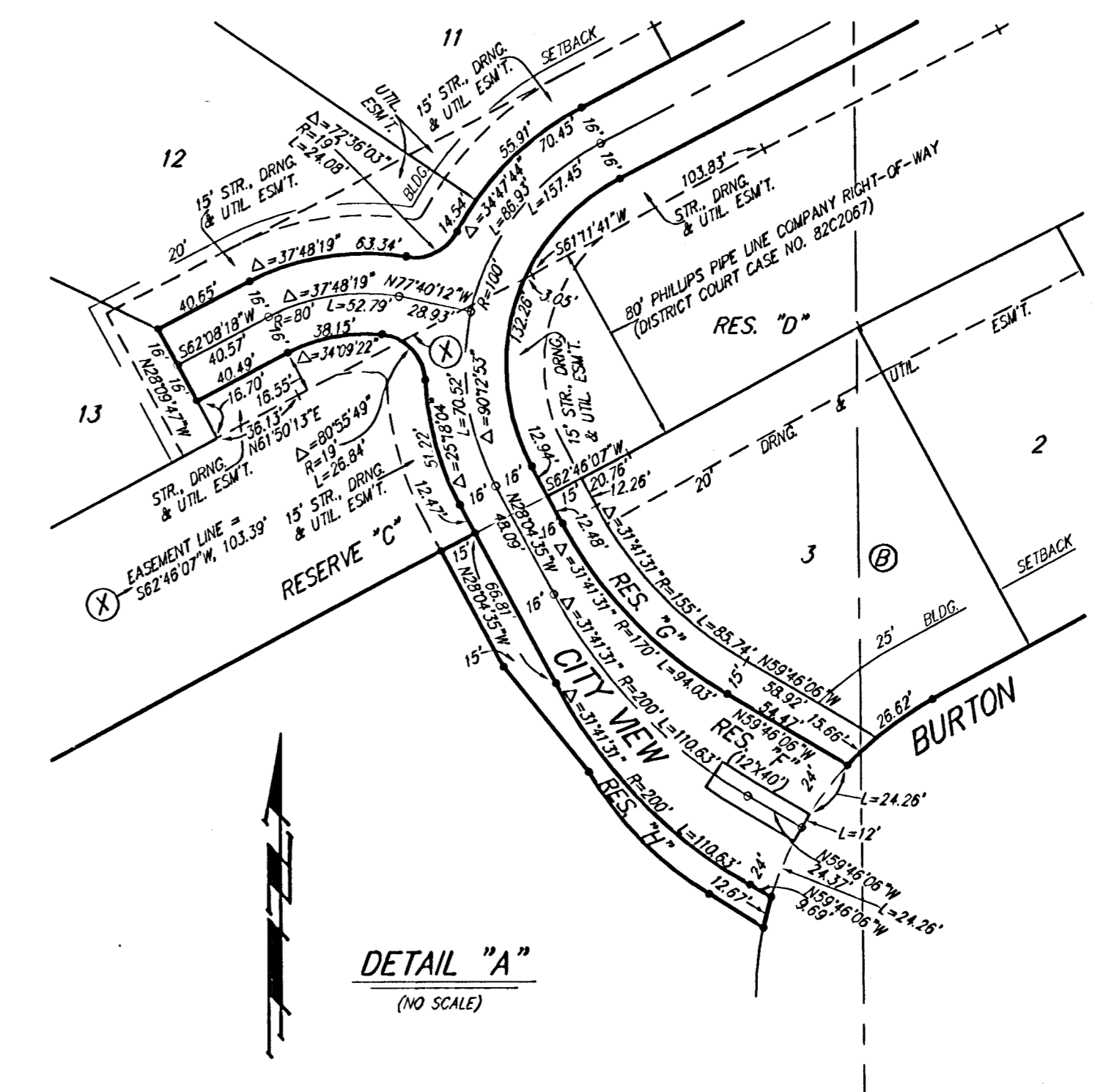


- = #4 REBAR W/ "BAUGHMAN" CAP (SET)
- ⊙ = #4 REBAR W/ "TILS" CAP (FOUND)
- △ = STONE (FOUND)
- ⊠ = 3/4" IRON IN TRIMBLE (FOUND)

- (M) = MEASURED
- (P) = PLATTED
- (C) = CALCULATED
- (C-P) = CALCULATED PER PLATTED INFO.



**DETAIL "B"**  
(NO SCALE)  
(SEE PAGE 1)



**DETAIL "A"**  
(NO SCALE)

SEE DETAIL "A"

LOT	BLOCK	ELEVATION
1	A	1376.7
5-8	A	1380.5
4-8	A	1387.1
9-13	B	1374.1
14-15	B	1376.7
18-31	B	1375.1
32-41	B	1388.0

**BENCHMARKS:**  
CITY OF WICHITA BENCHMARK DISC, TOP OF CURB AT WEST END OF CURB RETURN, NORTHWEST CORNER OF INTERSECTION OF CITY VIEW AND SHERIAC CIR. IN SHADOW WOODS ADDITION. ELEV. = 1388.68 NVD029  
CITY OF WICHITA BENCHMARK DISC, TOP OF CURB BY FIRE HYDRANT ALONG SOUTHERLY EXTENSION OF LOT LINE COMMON TO LOTS 17 & 18, BLOCK C, SHADOW WOODS ADDITION, ON NORTH SIDE OF SHERIAC CIR., WEST OF SHERIAC. ELEV. = 1380.58 NVD029  
CITY OF WICHITA BENCHMARK DISC, TOP OF CURB BY FIRE HYDRANT AT WEST END OF CURB RETURN, NORTHWEST CORNER OF INTERSECTION OF SHERIAC CIR. AND SHERIAC CT., SOUTH OF SE CORNER OF LOT 13, BLOCK B, SHADOW WOODS ADDITION. ELEV. = 1382.11 NVD029

**NOTE:**  
A master grading plan for drainage has been developed for this subdivision and is on file with the City of Wichita, Kansas. All drainage easements, right-of-ways, or reserves shall remain at established grades or as modified with the approval of the City Engineer of the City of Wichita, Kansas. No obstructions which impede the flow of this drainage system shall be allowed.

**Baughman Company, P.A.**  
 315 Ellis St. Wichita, KS 67211 P.316.262.7211 F.316.262.0149  
 ENGINEERING | SURVEYING | PLANNING | LANDSCAPE ARCHITECTURE  
 FILE: PLAT THE WOODS ADDITION DWG01 THE WOODS DWG01.MXC