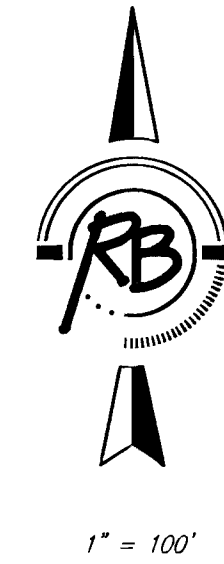
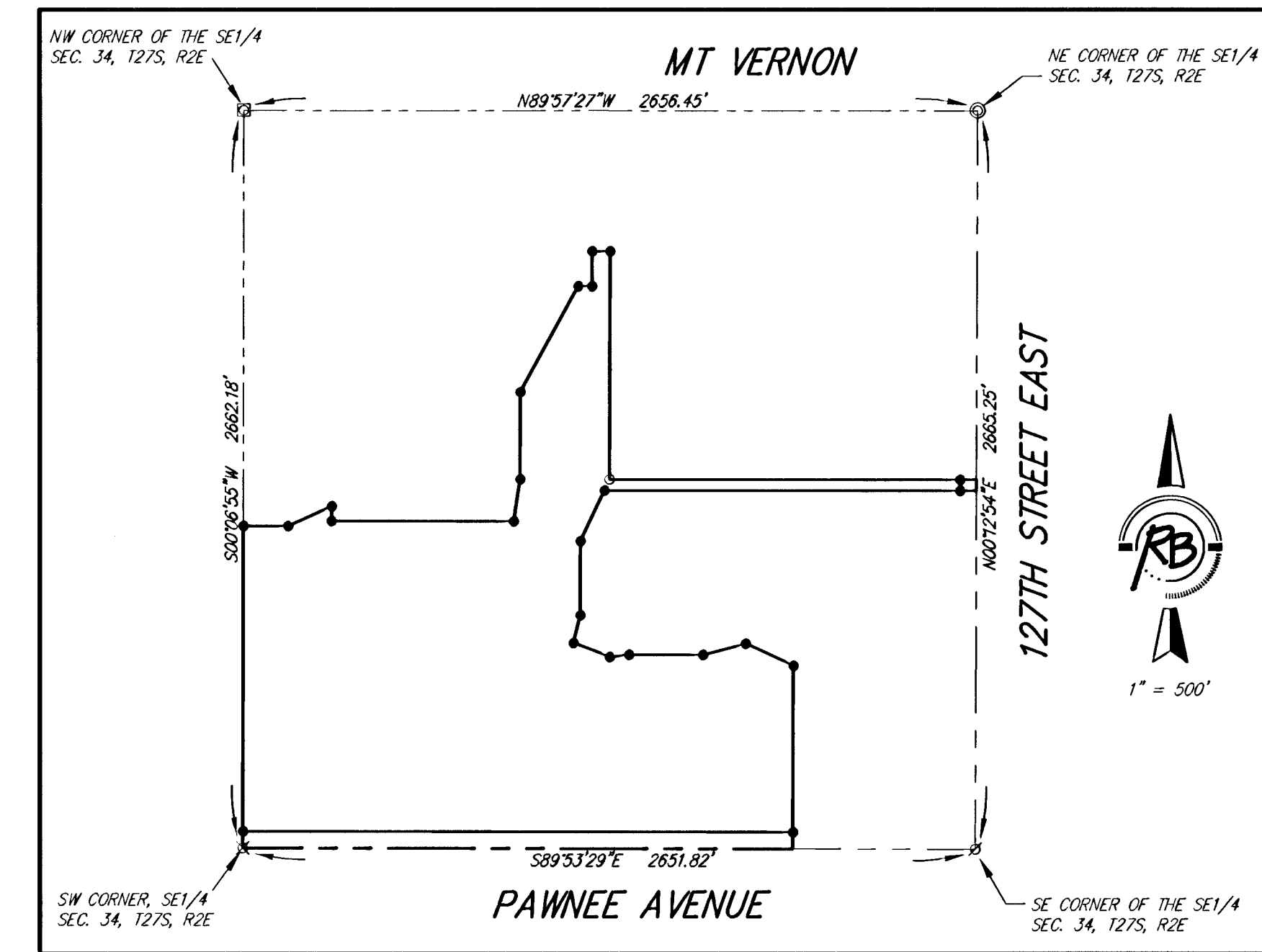
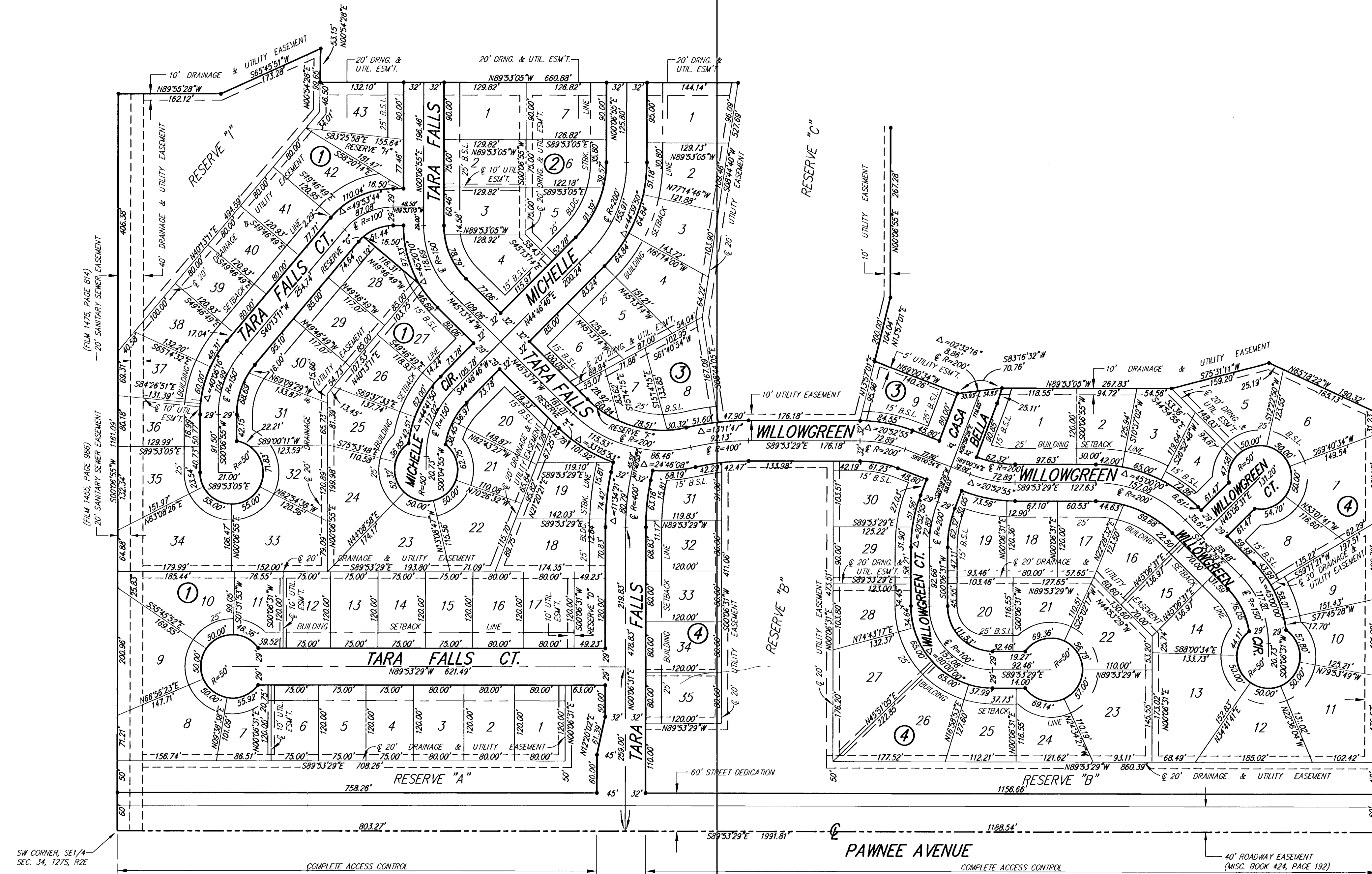


CASA BELLA

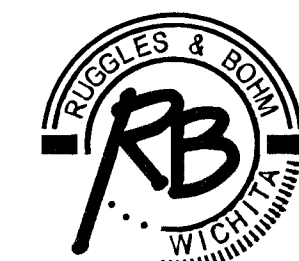
Wichita, Sedgwick County, Kansas



- SURVEY MARKER LEGEND**
- ⊠ = PK NAIL IN CONCRETE
 - = 1/2" IRON PIPE
 - ⊙ = 3/4" IRON PIPE
 - ⊗ = 5/8" REBAR W/GARBER CAP (FOUND)
 - ⊗ = 1" BAR (FOUND)
 - = 5/8" REBAR W/R&B CAP (SET)

BENCH MARK: SPB BRASS DISC 55.45' E. & 5.13' S. OF THE N.W. COR., SW 1/4, SEC. 35, T27S, R2E
ELEV.=1348.35 (NGVD) = 160.95 (CITY DATUM)

MINIMUM BUILDING PAD ELEVATION FOR LOWEST OPENING INTO STRUCTURES		
BLOCK	LOT NO.	ELEVATION (N.G.V.D.)
3	1, 2, 3, 4, 9	1306.0
4	26, 27, 28, 29, 30, 31, 32, 33, 34, 35	1306.5



Ruggles & Bohm, P.A.
Engineering, Surveying, Land Planning
924 North Main (316) 264-8008
Wichita, Kansas 67203 (316) 264-4621 fax
www.rbkansas.com E-mail: info@rbkansas.com

DWG FILE: SURVEY BASE
PROJECT NO. 2521P
SEPTEMBER 26, 2005