

-0.24%

LEGEND



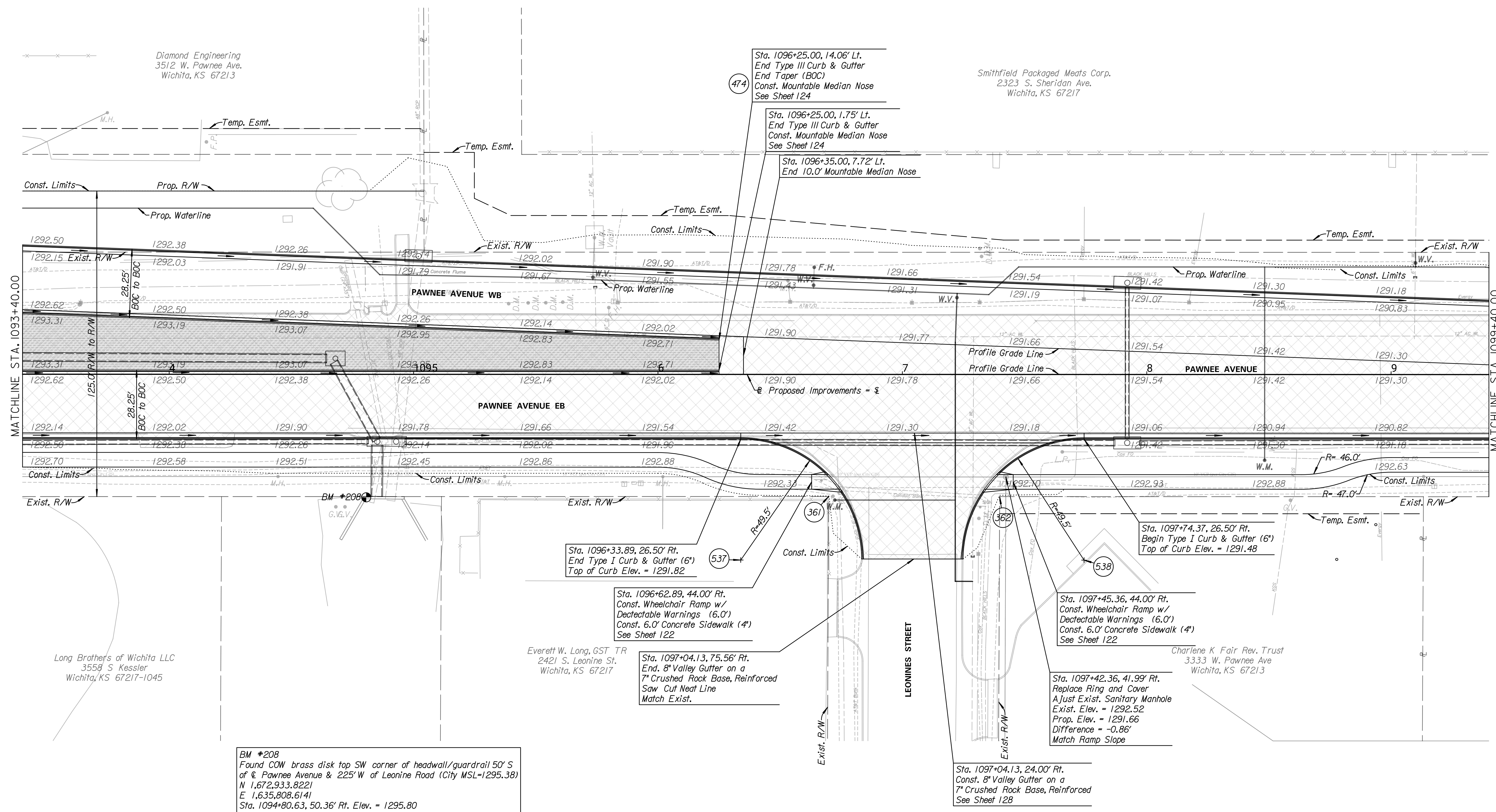
Note: For the project control & coordinate data, See Sheets 3-5



TRANSYSTEMS
245 N. WACO
SUITE 222
WICHITA, KANSAS 67202
MAIN: 316-303-3000
FAX: 316-462-5629

CONSULTANTS:

WEST STREET IMPROVEMENTS
FROM PAWNEE TO HARRY



Diamond Engineering
3512 W. Pawnee Ave.
Wichita, KS 67213

Smithfield Packaged Meats Corp.
2323 S. Sheridan Ave.
Wichita, KS 67217

Long Brothers of Wichita LLC
3558 S Kessler
Wichita, KS 67217-1045

Everett W. Long, GST TR
2421 S. Leonine St.
Wichita, KS 67217

Charlene K Fair Rev. Trust
3333 W. Pawnee Ave
Wichita, KS 67213

BM #208
Found COW brass disk top SW corner of headwall/guardrail 50' S
of E Pawnee Avenue & 225' W of Leonine Road (City MSL=1295.38)
N 1,672,933.8221
E 1,635,808.6141
Sta. 1094+80.63, 50.36' Rt. Elev. = 1295.80

Sta. 1096+33.89, 26.50' Rt.
End Type I Curb & Gutter (6')
Top of Curb Elev. = 1291.82

Sta. 1096+62.89, 44.00' Rt.
Const. Wheelchair Ramp w/
Detectable Warnings (6.0')
Const. 6.0' Concrete Sidewalk (4')
See Sheet 122

Sta. 1097+04.13, 75.56' Rt.
End, 8" Valley Gutter on a
7" Crushed Rock Base, Reinforced
Saw Cut Neat Line
Match Exist.

Sta. 1097+45.36, 44.00' Rt.
Const. Wheelchair Ramp w/
Detectable Warnings (6.0')
Const. 6.0' Concrete Sidewalk (4')
See Sheet 122

Sta. 1097+42.36, 41.99' Rt.
Replace Ring and Cover
Adjust Exist. Sanitary Manhole
Exist. Elev. = 1292.52
Prop. Elev. = 1291.66
Difference = -0.86'
Match Ramp Slope

Sta. 1097+04.13, 24.00' Rt.
Const. 8" Valley Gutter on a
7" Crushed Rock Base, Reinforced
See Sheet 128

REVISIONS:	MARK	DATE	DESCRIPTION

PROJ NO: 87 N-0720-01
SCALE: 1"=20'
DATE: 9/25/2023
DESIGNED BY: CKC
DRAWN BY: CKC
CHECKED BY: MDB

SHEET TITLE:
**PAWNEE ST.
PLAN & PROFILE
STA. 1093+40.00 TO
STA. 1099+40.00**

SHEET NO.
28
SHEET 28 OF 517

lroyals 9/25/2023 6:20:59 PM - c:\transystems\proj\local\transystems\proj\1a-w_kochs\109340-109940\CDRW-M02-106.DGN