

STORM WATER SEWER PLANS FOR
STORM WATER SEWER #617
 IN
REED'S COVE ADDITION


AN ADDITION TO THE CITY OF WICHITA
 SEDGWICK COUNTY, KANSAS

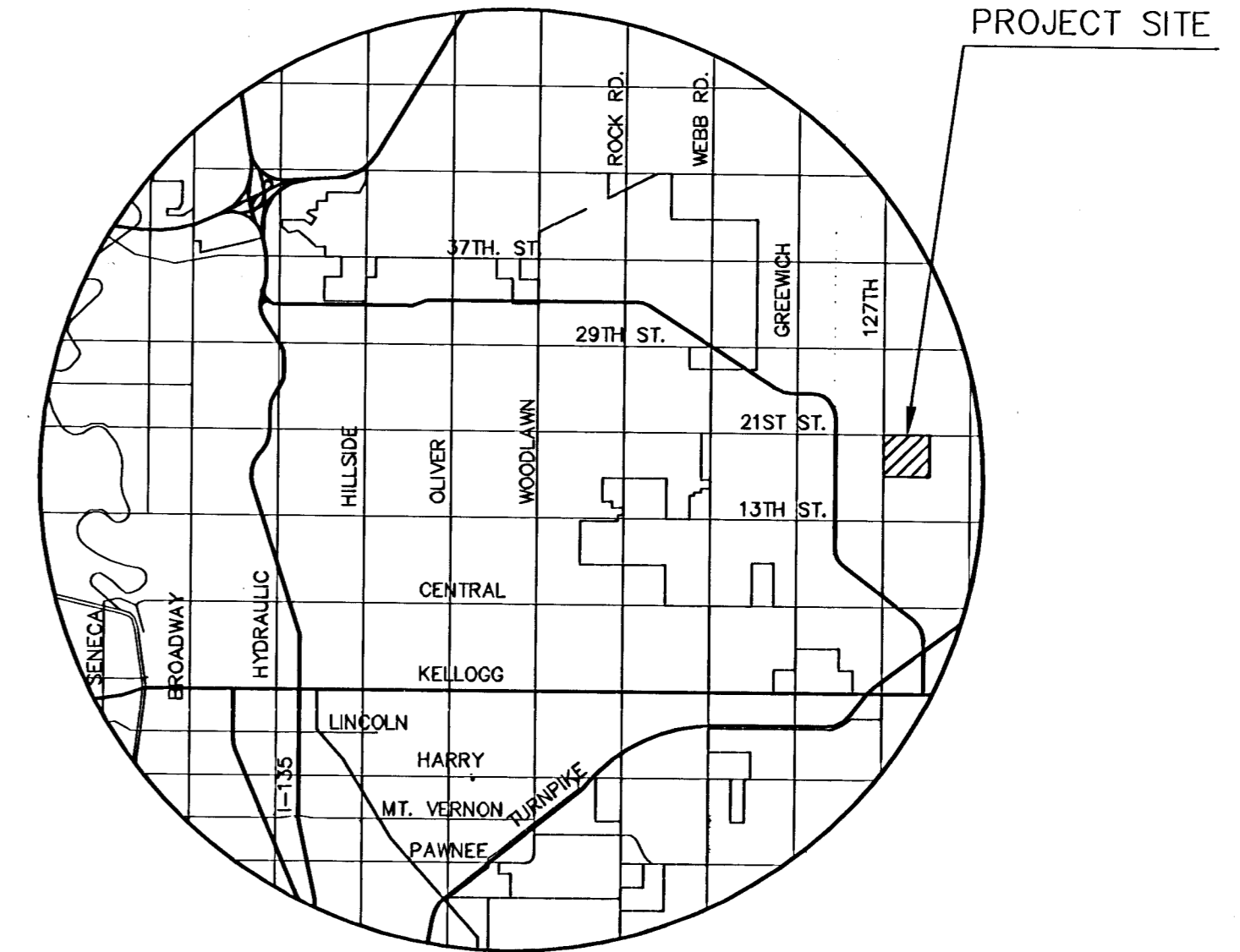
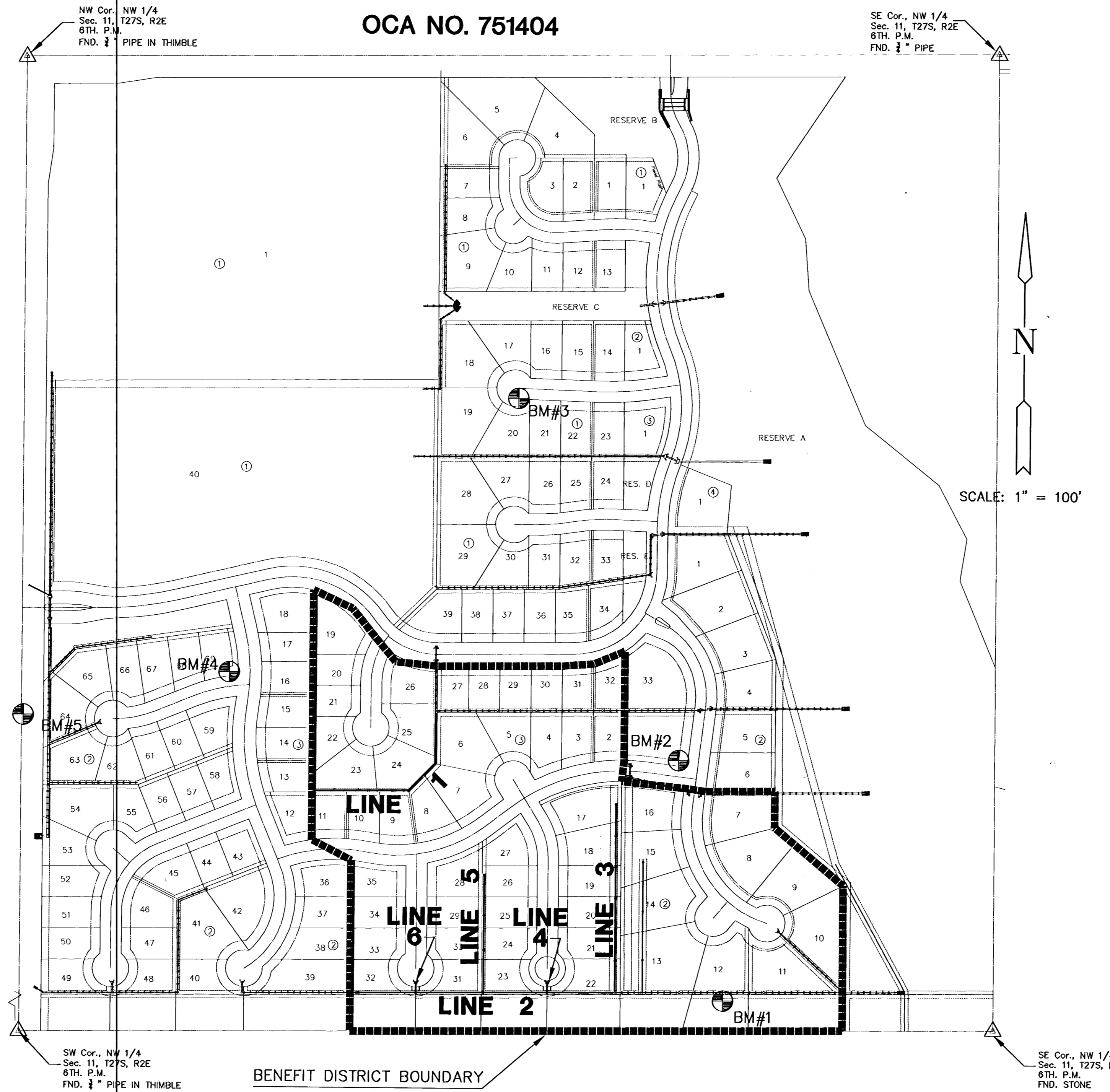
PROJECT NO. 468-84029

JIM ARMOUR, CITY ENGINEER

OCA NO. 751404

GENERAL NOTES

1. THE TOPS OF INLETS AND MANHOLES AS NOTED ON THE PLANS MAY VARY SO AS TO MEET PROPOSED TOP OF CURB ELEVATIONS OR PAVEMENT ELEVATIONS. THE FIELD ENGINEER SHALL LOCATE INLETS AND MANHOLES WITH REFERENCE TO PROPOSED PAVING PLANS OF THE PERTINENT STREETS.
2. ALL CONCRETE SHALL BE STANDARD PAVING MIX UNLESS OTHERWISE NOTED.
3. THE CONTRACTOR SHALL BE RESPONSIBLE FOR PRESERVING PROPERTY IRONS. THE CONTRACTOR SHALL BE REQUIRED TO RE-ESTABLISH ANY PROPERTY IRONS WHICH ARE DAMAGED OR DESTROYED BY HIS CONSTRUCTION OPERATIONS. SUCH IRONS SHALL BE RE-ESTABLISHED BY A LICENSED LAND SURVEYOR IN ACCORDANCE WITH STATE LAWS.
4. TREES TO BE REMOVED ARE MARKED  ALL TREES WHICH IN THE OPINION OF THE FIELD ENGINEER CAN BE SAVED, SHALL BE SAVED.
5. CONTRACTOR SHALL NOTIFY UTILITY COMPANIES OF CONSTRUCTION SCHEDULING.
6. EXISTING UTILITIES AND THEIR LOCATIONS, AS SHOWN ON THE PLANS REPRESENT THE BEST INFORMATION OBTAINABLE FOR DESIGN. LOCATION INFORMATION HAS BEEN OBTAINED FROM THE VARIOUS COMPANIES AND IS EITHER FROM COMPANY UTILITY DRAWINGS OR COMPANY PROVIDED FIELD LOCATIONS. THE PLAN LOCATIONS SHOWN ARE NOT GUARANTEED. ADDITIONAL EXISTING UTILITIES MAY ALSO BE ENCOUNTERED.
7. CONTRACTOR WILL BE REQUIRED TO PROVIDE A MINIMUM ADVANCE NOTICE OF FORTY-EIGHT (48) HOURS TO UTILITY COMPANIES TO STARTING ANY EXCAVATION AS FOLLOWS:
 KANSAS ONE-CALL 687-2470
 OR 687-2470 (LOCAL WICHITA)
 THE CONTRACTOR MUST NOTIFY THE FOLLOWING IN CASE OF EMERGENCY:
 CABLEVISION 263-2061
 KG&E (GAS & ELECTRIC) 383-8600
 SOUTHWESTERN BELL TELEPHONE COMPANY 1-800-734-7590
 CITY OF WICHITA WATER & SEWER MAINT. 262-6000
 ARKLA GAS COMPANY 946-0096
8. RUBBLE FROM THE REMOVAL OF MISCELLANEOUS STRUCTURES AND EXCESS EXCAVATION WHICH IS TO BE WASTED SHALL BE DISPOSED OF ON SITES TO BE PROVIDED BY THE CONTRACTOR. THESE SITES SHALL BE APPROVED BY THE ENGINEER AS TO SUITABILITY, APPEARANCE AND SITE LOCATION. LOCATIONS THAT, IN THE OPINION OF THE ENGINEER, WILL LEAVE AN UNSIGHTLY APPEARANCE WILL NOT BE APPROVED. ALL DISPOSAL SITES MUST BE APPROVED BY THE KANSAS DEPARTMENT OF HEALTH AND ENVIRONMENT. MATERIAL EITHER STOCKPILED OR DISPOSED OF IN A FLOOD PLAIN WOULD REQUIRE A KANSAS STATE BOARD OF AGRICULTURE PERMIT. ANY MATERIAL DUMPED IN WATERS OF THE UNITED STATES OR WETLANDS IS SUBJECT TO U.S. CORPS OF ENGINEERS PERMITTING REGULATIONS. ANY MATERIAL BURIED OR STOCKPILED BEYOND APPROVED CONSTRUCTION LIMITS WOULD REQUIRE ADDITIONAL ARCHAEOLOGICAL INVESTIGATIONS UNLESS BURIED IN A PREVIOUSLY APPROVED BORROW LOCATION.
9. ANY TREE THAT MUST HAVE BRANCHES REMOVED SHALL BE TRIMMED WITH A SHARP INSTRUMENT/TOOL THAT IS INTENDED FOR SUCH OPERATIONS. CONSULT LANDSCAPE ARCHITECT PRIOR TO TRIMMING. KNOCKING BRANCHES OFF WITH A BACKHOE OR OTHER SIMILAR MACHINERY IS NOT ACCEPTABLE!
10. ALL DISTURBED AREAS SHALL BE SEEDED AND MULCHED. SEEDING SHALL BE RYE GRASS AT A RATE OF 200 LBS PER ACRE.



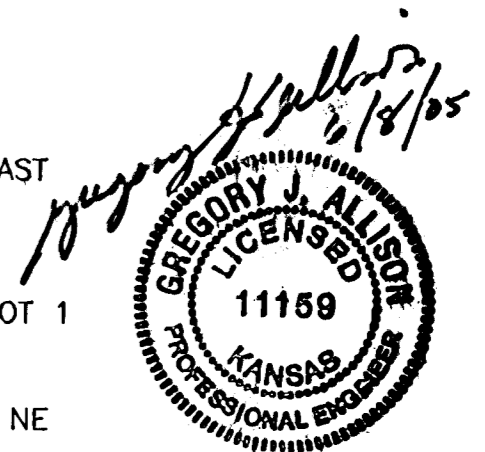
LOCATION MAP

INDEX TO DRAWINGS

SHEET NO.	DESCRIPTION
1	TITLE SHEET
2-3	MANHOLE DETAILS
4	INLET DETAILS
5	SWS LINE 1
6	SWS LINE 2
7	SWS LINES 2, 4 & 6
8	SWS LINE 3
9	SWS LINE 5
10	EASEMENT GRADING
11	CROSS SECTION
12-15	BMP DETAILS
16	FINAL PLAT

BENCHMARKS

- BM 1 1356.10 RR SPIKE IN N. FACE N. H-POLE, 4TH H-POLE EAST OF 127TH ST. EAST, 1940'+/- E. & 86'+/- NORTH OF W 1/4 COR SEC 11, T 27 S, R 2 E.
- BM 2 1354.30 "T" POST 15'+/- N. & 15'+/- W. OF SE COR LOT 1 BLOCK 3, REED'S COVE.
- BM 3 1362.04 "□" CHISELED SQUARE ON TOP OF CURB AT THE NE CORNER OF LOT 20, BLK. 1, REED'S COVE.
- BM 4 1375.44 BRASS DISK IN TOP OF CURB AT SE RETURN OF LOT 69, BLK. 2, REED'S COVE.
- BM 5 1364.99 RR SPIKE IN W. FACE 4TH PP NORTH OF RR TRACKS ON EAST SIDE OF 127TH ST. EAST, 837'+/- NORTH & 27'+/- EAST OF W COR SEC 11, T 27 S, R 2 E.



MKEC ENGINEERING CONSULTANTS
 411 N. WEBB ROAD
 WICHITA, KS. 67204
 316-684-9600

REED'S COVE ADDITION
 PROJECT NAME

STORM WATER SEWER PLANS-PHASE 3
 SHEET TITLE

DFL DESIGN BY:	DFL DRAWN BY:	GJA CHECKED BY:
JUNE 2005 DATE	02121 JOB NO.	1 / 16 SHEET/OF