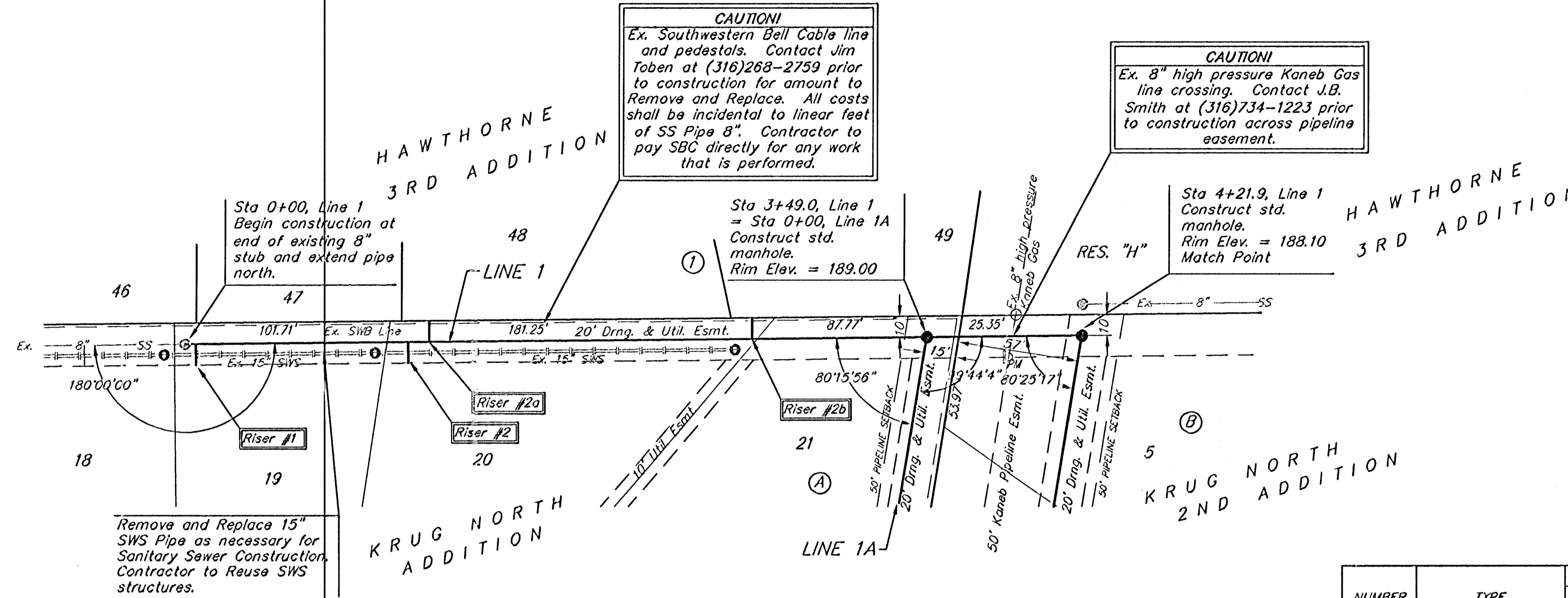


BENCHMARK:
 BM #1: "□" Cut in middle of
 N headwall of RCBC on 21st
 St. North, 100.3' W & 22.1'
 N of SE Cor., SE1/4, Sec. 2,
 T-27-S, R-2-E
 Elev. = 173.23 City Datum

BM #2: "□" Cut at the SE
 corner of the intersection of
 Castle Rock & Castle Rock Ct.,
 Krug North Addition.
 Elev. = 183.50 City Datum

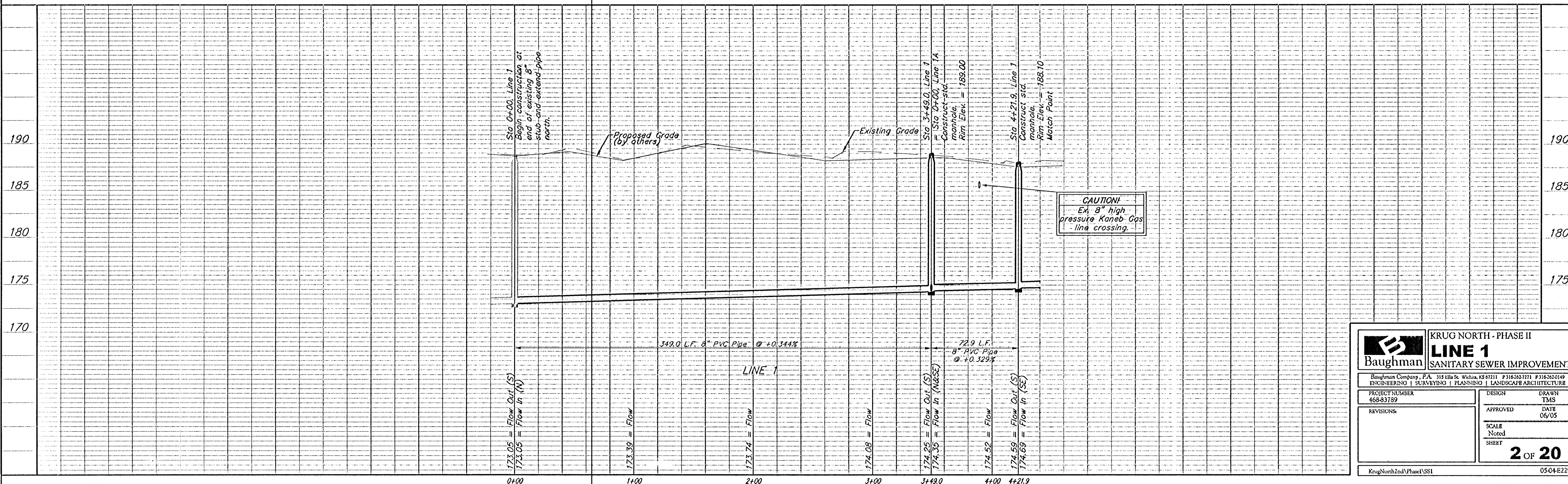
Scale: 1" = 40' Horizontal
 1" = 5' Vertical
 • = Iron



SEWER SERVICE TABLE

NUMBER	TYPE	LOCATION				FOR INFORMATION ONLY	
		LOT NO.	BLOCK NO.	LINE NO.	STATION DIRECTION	APPROXIMATE LENGTH 4" PIPE VERTICAL	HORIZONTAL
1	8" X 4" Tee	19	A	1	0+00/RT.07	12.0'	10' 10.3'
2	8" X 4" Tee	20	A	1	1+00/RT.03	11.5'	10'
2a	8" X 4" Tee	48	1	1	1+10/RT.11	11.5'	10'
2b	8" X 4" Tee	49	1	1	2+00/RT.04	11.5'	10' 9.5'

NOTE: Vertical Riser Pipe shall be extended to 2' minimum above ground water elevation and 4' maximum below proposed ground elevation.



Baughman KRUG NORTH - PHASE II
LINE 1
 SANITARY SEWER IMPROVEMENTS

Baughman Company, P.A. 315 Ellis St. Wichita, KS 67211 P 316-262-7771 F 316-262-0149
 ENGINEERING | SURVEYING | PLANNING | LANDSCAPE ARCHITECTURE

PROJECT NUMBER 465-53759	DESIGN TWS
REVISIONS	APPROVED DATE 06/05
	SCALE Noted
	SHEET 2 OF 20

KrugNorth2ndPhase1SSI 0504E229