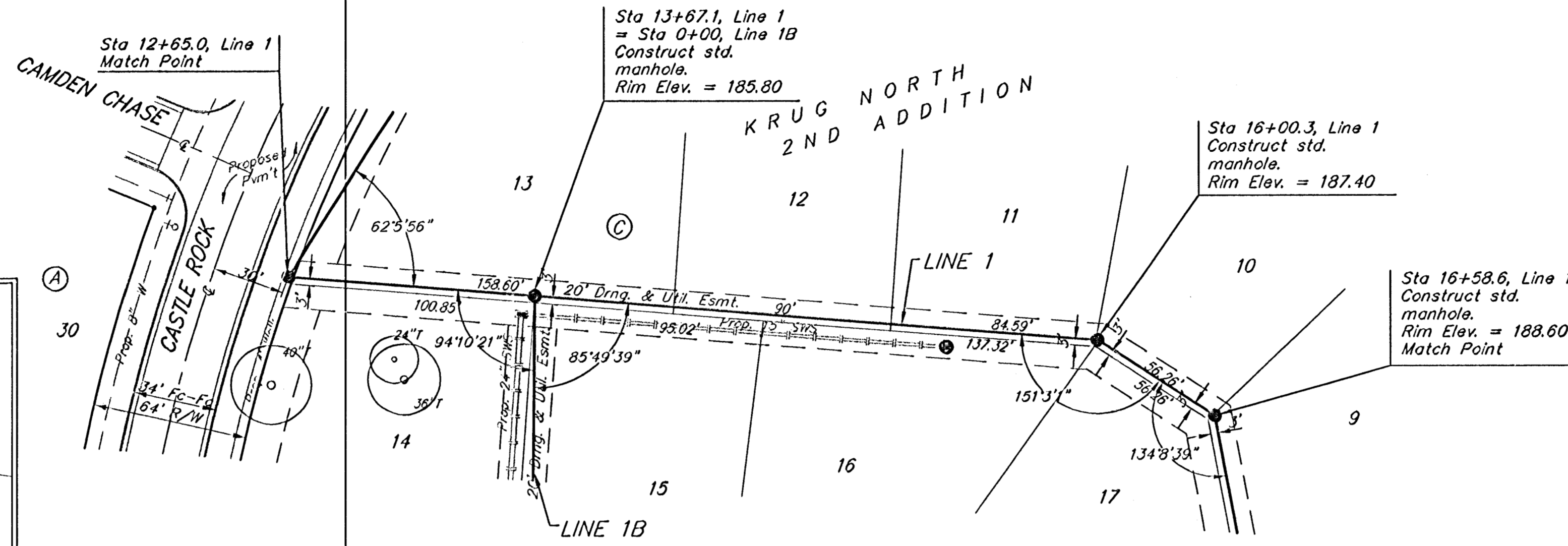
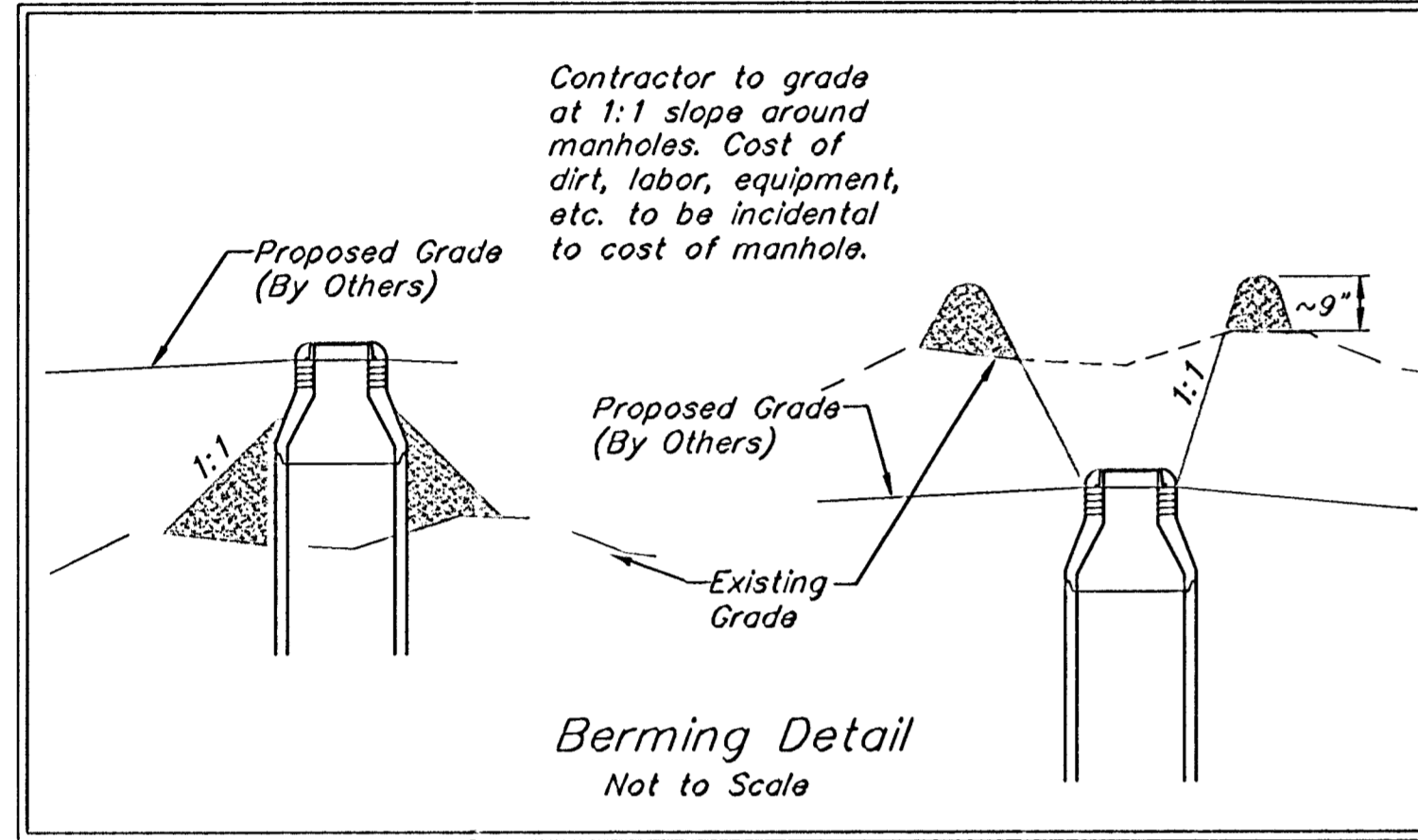
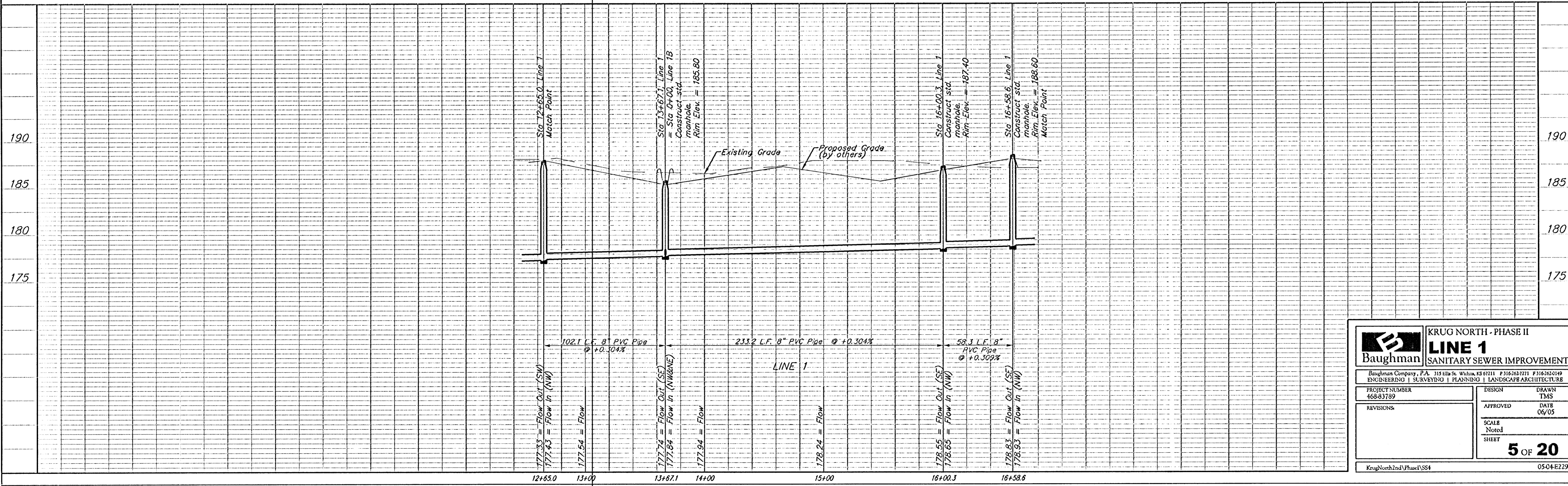


BENCHMARK:
 BM #1: "□" Cut in middle of N headwall of RCBC on 21st St. North. 1004.3' W & 22.1' N of SE Cor., SE 1/4, Sec. 2, T-27-S, R-2-E.
 Elev. = 173.23 City Datum

BM #2: "□" Cut at the SE corner of the intersection of Castle Rock & Castle Rock Ct., Krug North Addition.
 Elev. = 183.50 City Datum



Scale: 1" = 40' Horizontal
 1" = 5' Vertical
 • = Iron



Baughman		KRUG NORTH - PHASE II	
ENGINEERING SURVEYING PLANNING LANDSCAPE ARCHITECTURE		LINE 1	
PROJECT NUMBER 468-93789		DESIGN TMS	
REVISIONS:		APPROVED DATE 06/05	
		SCALE Noted	
		SHEET 5 OF 20	
KrugNorth2ndPhase1SS4		0504E229	