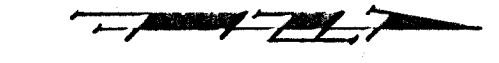
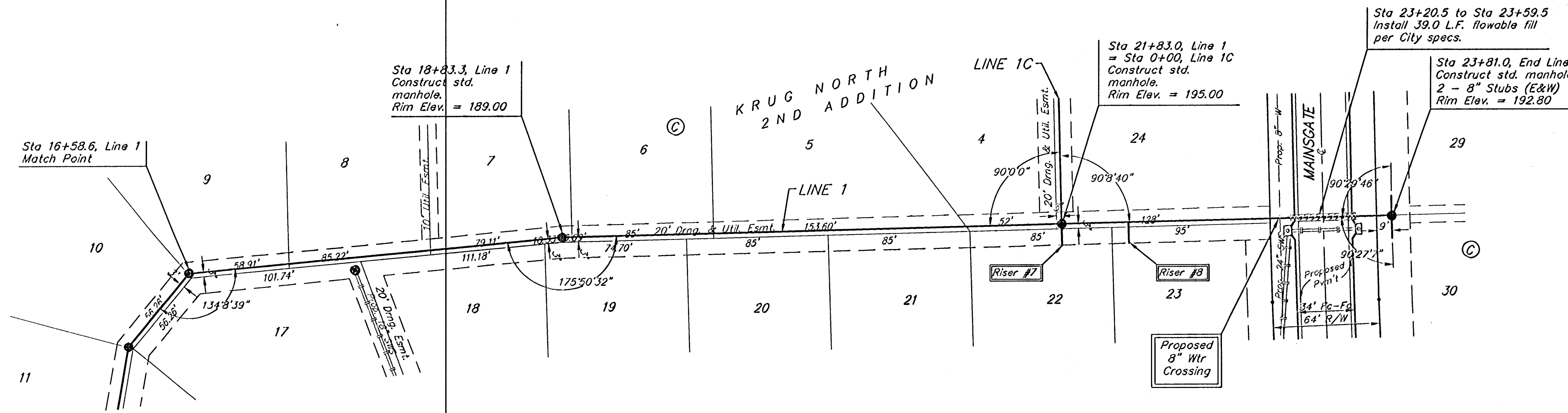


BENCHMARK:  
 BM #1: "□" Cut in middle of  
 N headwall of RCBC on 21st  
 St. North, 1004.3' W & 22.1'  
 N of SE Cor., SE 1/4, Sec. 2,  
 T-27-S, R-2-E.  
 Elev. = 173.23 City Datum

BM #2: "□" Cut at the SE  
 corner of the intersection of  
 Castle Rock & Castle Rock Ct.,  
 Krug North Addition.  
 Elev. = 183.50 City Datum



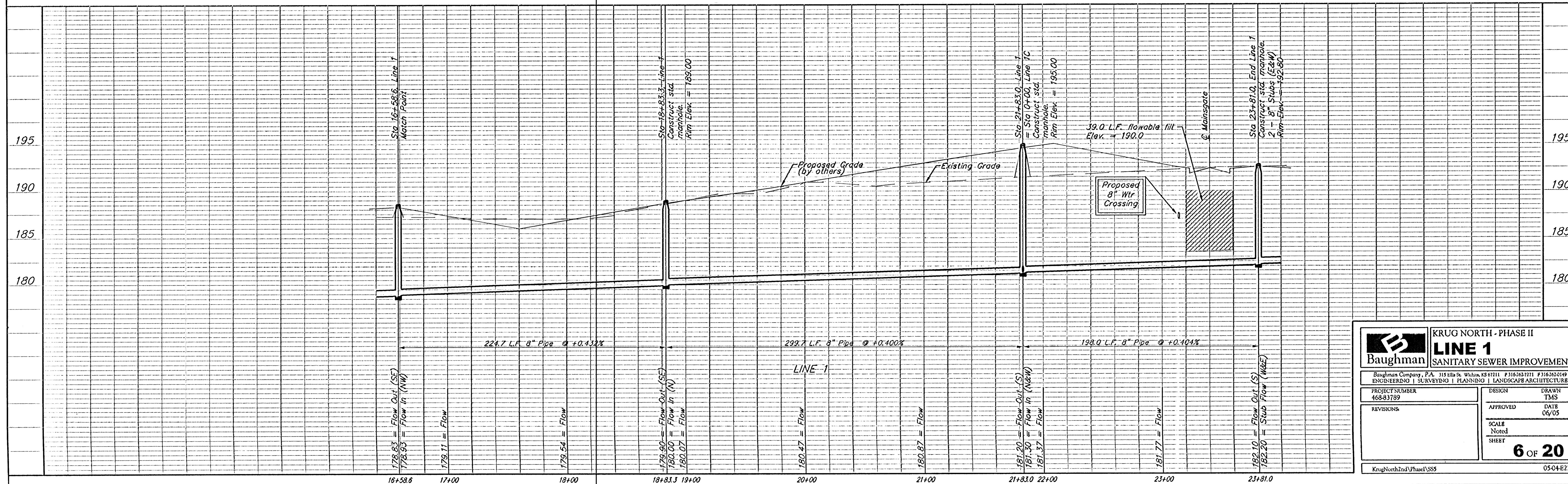
Scale: 1" = 40' Horizontal  
 1" = 5' Vertical  
 • = Iron



SEWER SERVICE TABLE

NUMBER	TYPE	LOCATION			FOR INFORMATION ONLY	
		LOT NO.	BLOCK NO.	LINE NO. DIRECTION	STATION	APPROXIMATE LENGTH 4" PIPE
7	4" Stub	22	C	1	21+83/RI.	9.5' 13'
8	8" X 4" Tee	23	C	1	22+83/RI.	9.5' 13'

NOTE: Vertical Riser Pipe shall be extended to 2' minimum above ground water elevation and 4' maximum below proposed ground elevation.



**KRUG NORTH - PHASE II**

**LINE 1**  
SANITARY SEWER IMPROVEMENTS

**Baughman** ENGINEERING | SURVEYING | PLANNING | LANDSCAPE ARCHITECTURE

PROJECT NUMBER: 468-83789  
 DESIGN: TMS  
 DRAWN: TMS  
 APPROVED: DATE 06/05  
 REVISIONS:  
 SCALE: Noted  
 SHEET: **6 OF 20**

KrugNorth2ndPhaseII\_SSS 0504-E229