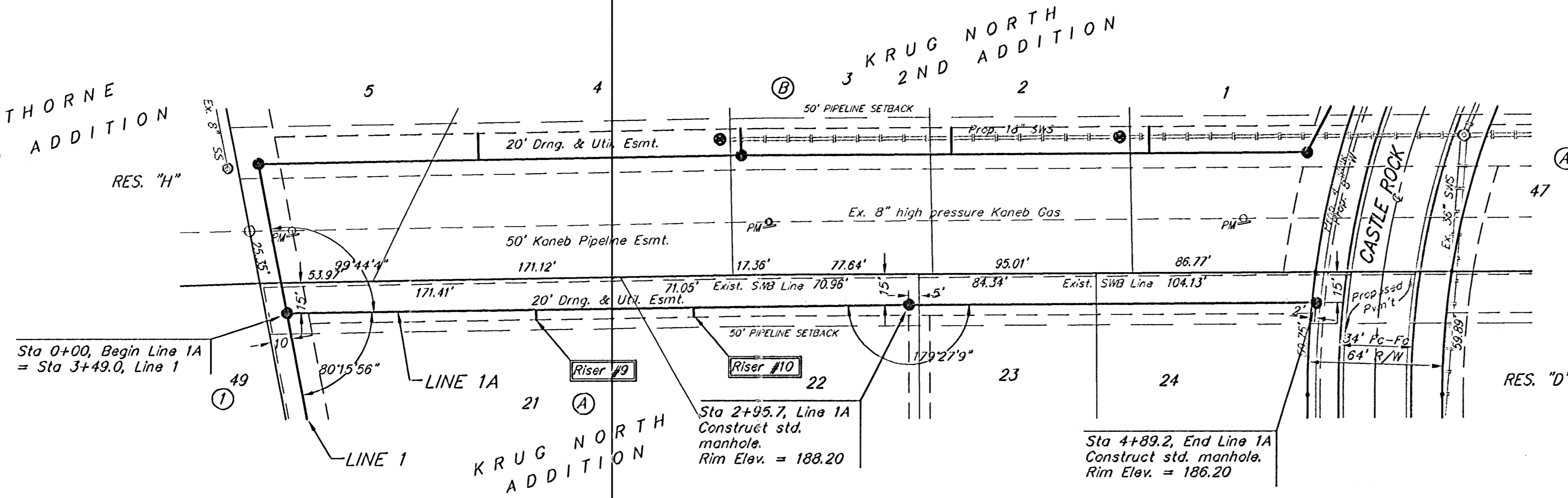


BENCHMARK:
 BM #1: "□" Cut in middle of
 N headwall of RCBC on 21st
 St. North, 1004.3' W & 22.1'
 N of SE Cor., SE1/4, Sec. 2,
 T-27-S, R-2-E.
 Elev. = 173.23 City Datum

BM #2: "□" Cut at the SE
 corner of the intersection of
 Castle Rock & Castle Rock Ct.,
 Krug North Addition.
 Elev. = 183.50 City Datum

HAWTHORNE
 3RD ADDITION
 RES. "H"

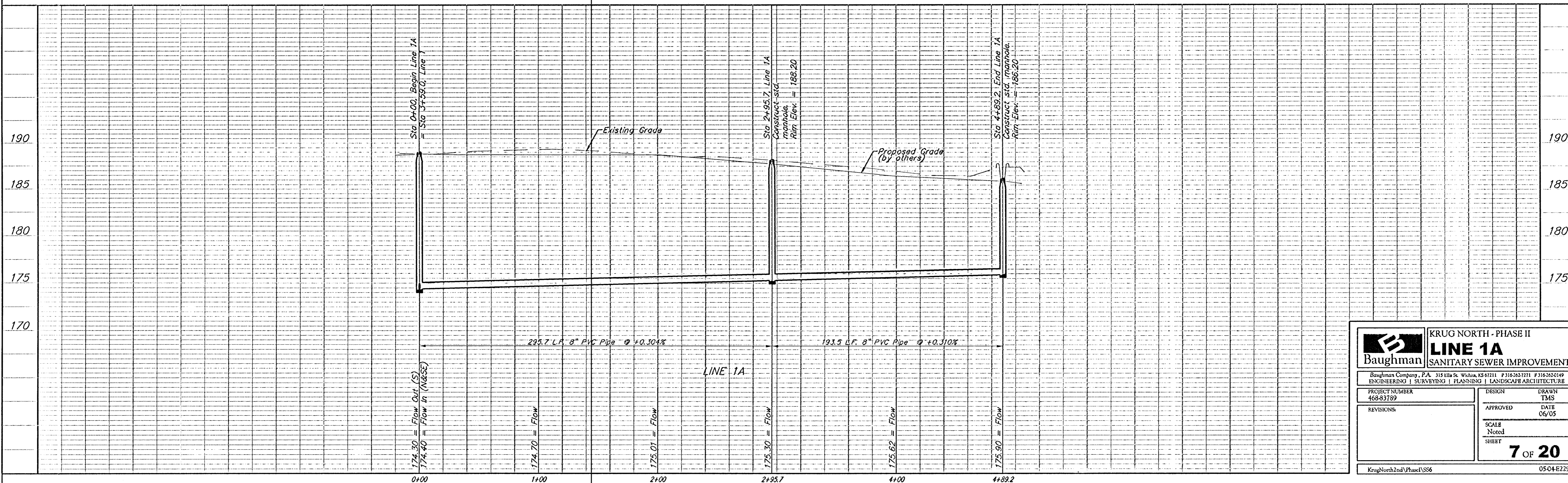


Scale: 1" = 40' Horizontal
 1" = 5' Vertical
 • = Iron

SEWER SERVICE TABLE

NUMBER	TYPE	LOCATION			FOR INFORMATION ONLY		
		LOT NO.	BLOCK NO.	LINE NO.	STATION \ DIRECTION	APPROXIMATE LENGTH 4" PIPE	
					VERTICAL	HORIZONTAL	
9	8" X 4" Tee	21	A	1A	1+29/Rt. + 19	10.0'	5' 8"
10	8" X 4" Tee	22	A	1A	1+95/Rt. + 24	10.0'	5' 8"

NOTE: Vertical Riser Pipe shall be extended to 2' minimum above ground water elevation and 4' maximum below proposed ground elevation.



	KRUG NORTH - PHASE II	
	LINE 1A	
SANITARY SEWER IMPROVEMENTS		
Baughman Company, P.A. 315 Ellis St. Wichita, KS 67211 P 316-263-7211 F 316-263-0149 ENGINEERING SURVEYING PLANNING LANDSCAPE ARCHITECTURE		
PROJECT NUMBER 468-83789	DESIGN TMS	DRAWN TMS
REVISIONS:	APPROVED DATE 06/05	SCALE Noted SHEET
		7 OF 20
KrugNorth2ndPhase1SS6		05-04-E229