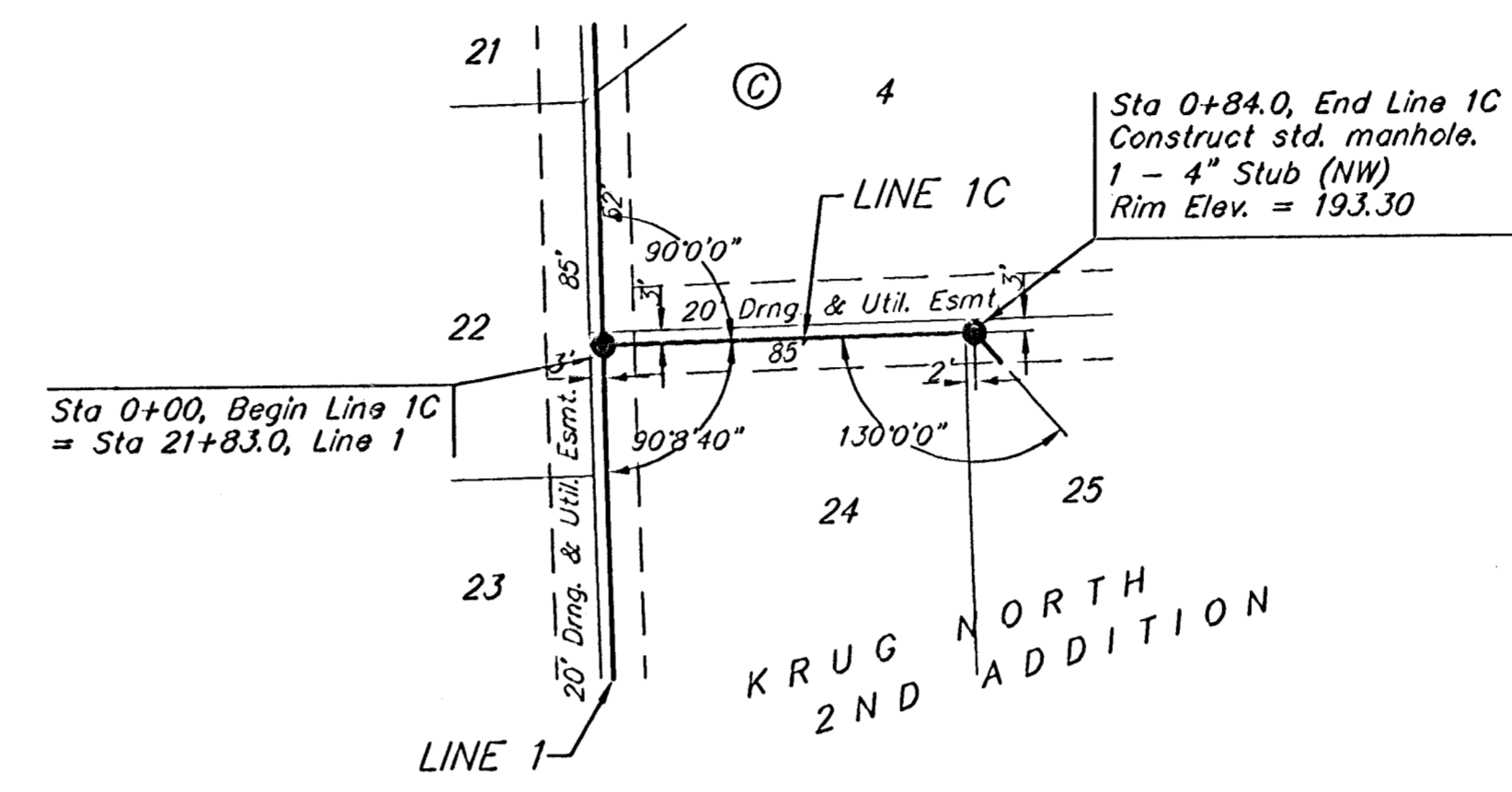
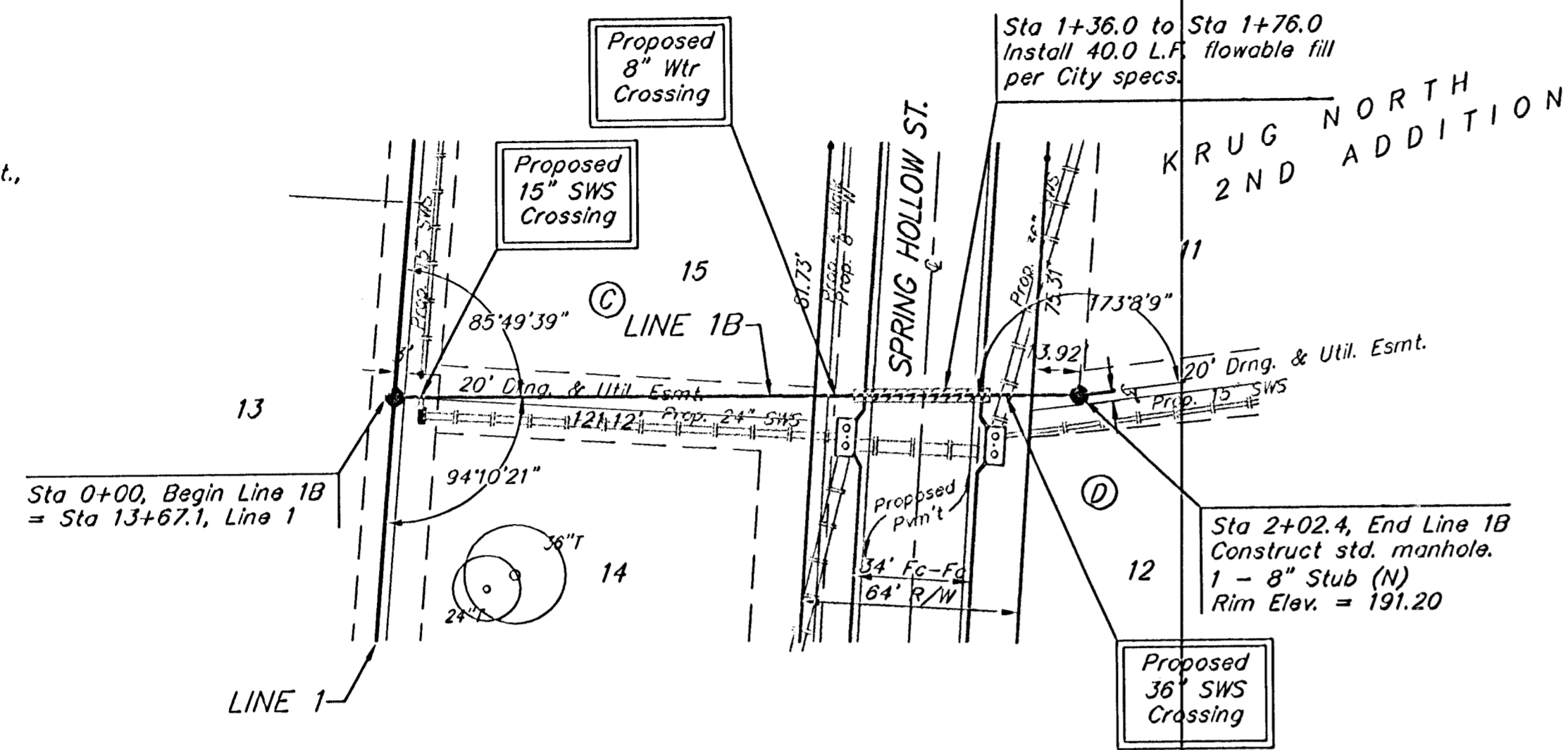
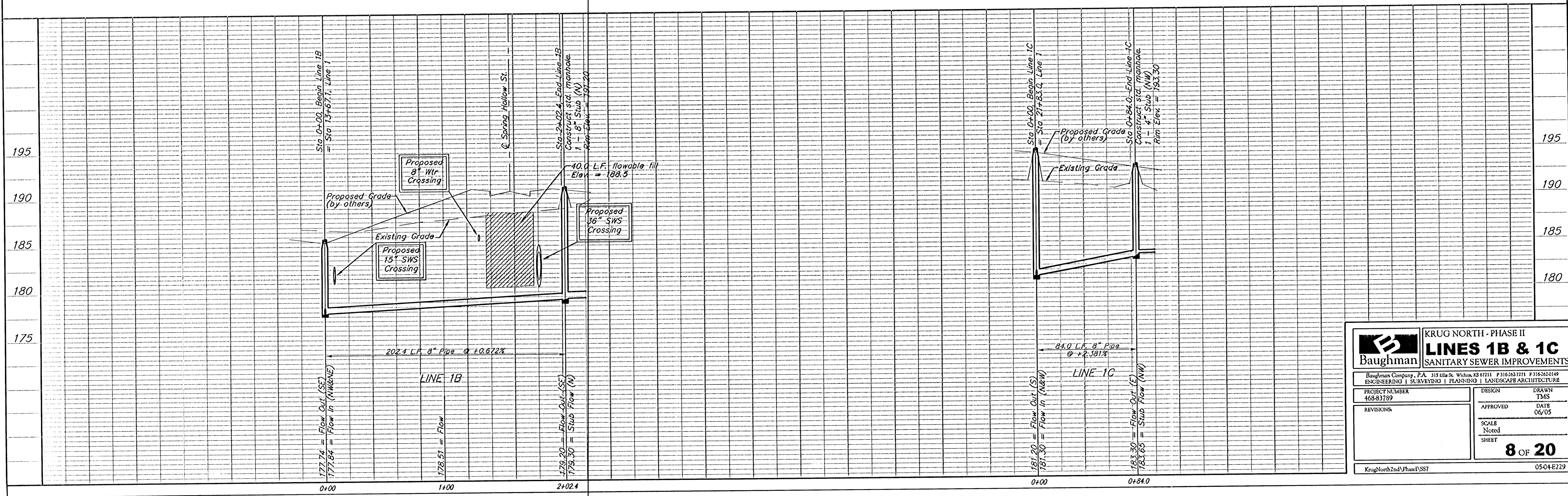


BENCHMARK:
 BM #1: "□" Cut in middle of
 N headwall of RCBC on 21st
 St. North, 1004.3' W & 22.1'
 N of SE Cor., SE 1/4, Sec. 2,
 T-27-S, R-2-E.
 Elev. = 173.23 City Datum

BM #2: "□" Cut at the SE
 corner of the intersection of
 Castle Rock & Castle Rock Ct.,
 Krug North Addition.
 Elev. = 183.50 City Datum



Scale: 1" = 40' Horizontal
 1" = 5' Vertical
 • = Iron



		KRUG NORTH - PHASE II LINES 1B & 1C SANITARY SEWER IMPROVEMENTS	
		<small>Baughman Company, P.A. 315 E. 11th St. W. Harrisburg, PA 17101-1001 P: 717-653-7111 F: 717-653-7110 ENGINEERING SURVEYING PLANNING LANDSCAPE ARCHITECTURE</small>	
PROJECT NUMBER 468-83789	DESIGN TMS	DRAWN TMS	DATE 06/05
REVISIONS	APPROVED	SCALE Noted	SHEET 8 OF 20
<small>KrugNorth2ndPhaseI.SST</small>		<small>05-04-E229</small>	