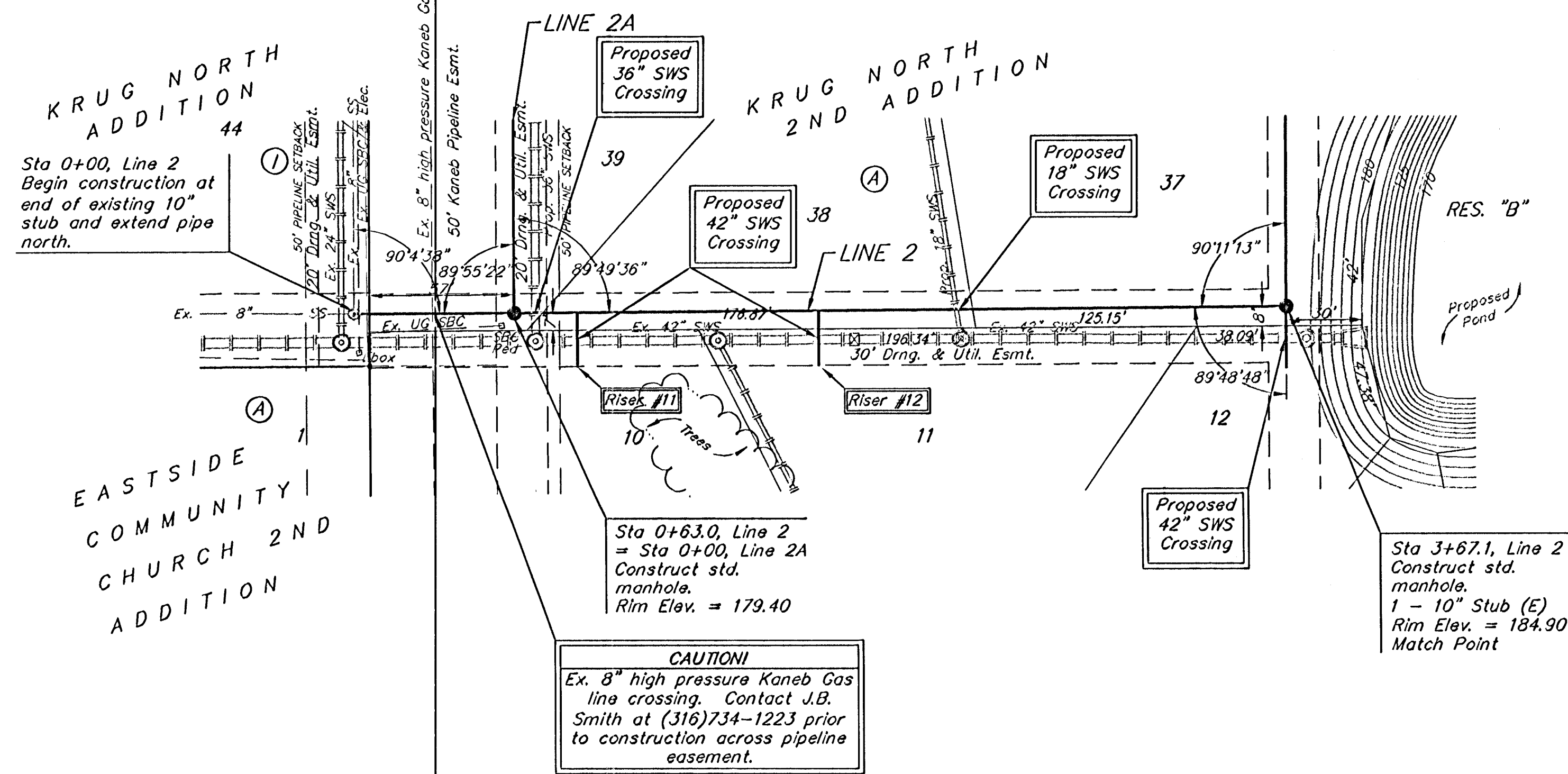


BENCHMARK:
 BM #1: "□" Cut in middle of
 N headwall of RCBC on 21st
 St. North, 1004.3' W & 22.1'
 N of SE Cor., SE1/4, Sec. 2,
 T-27-S, R-2-E.
 Elev. = 173.23 City Datum

BM #2: "□" Cut at the SE
 corner of the intersection of
 Castle Rock & Castle Rock Ct.,
 Krug North Addition.
 Elev. = 183.50 City Datum



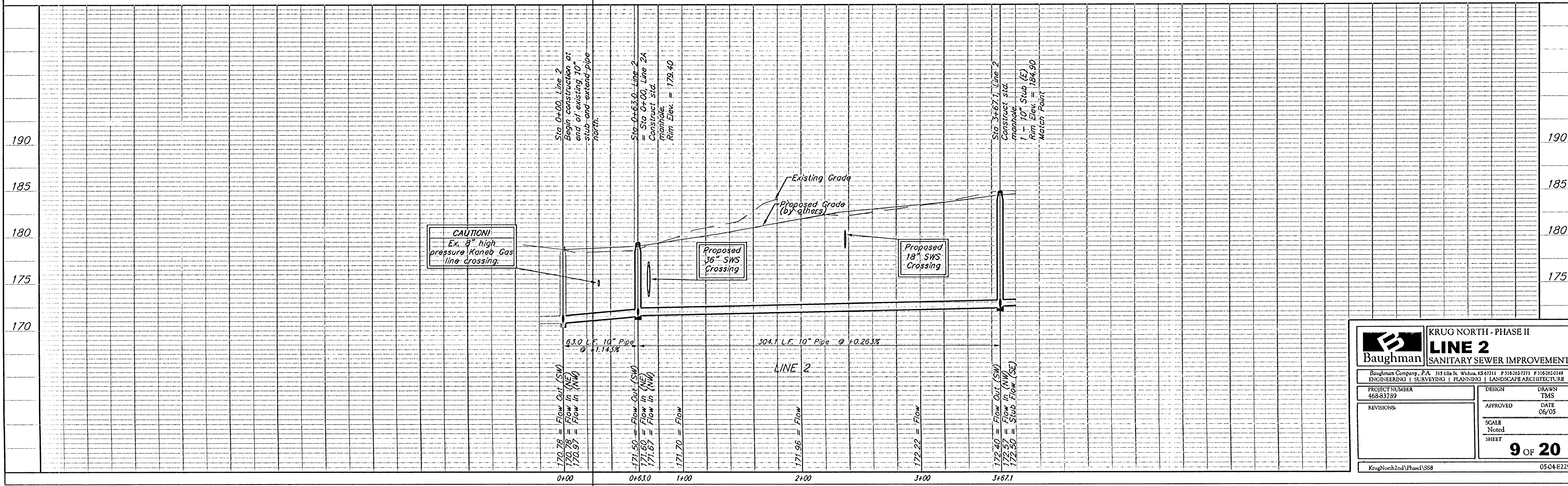
Scale: 1" = 40' Horizontal
 1" = 5' Vertical
 - = Iron



SEWER SERVICE TABLE

NUMBER	TYPE	LOCATION			STATION DIRECTION	FOR INFORMATION ONLY APPROXIMATE LENGTH 4" PIPE	
		LOT NO.	BLOCK NO.	LINE NO.		VERTICAL	HORIZONTAL
11	8" X 4" Tee	10	A	2	0+80/RI. & 89	4.0'	22' 20"
12	8" X 4" Tee	11	A	2	1+83/RI.	6.0'	22' 20"

NOTE: Vertical Riser Pipe shall be extended to 2' minimum above ground water elevation and 4' maximum below proposed ground elevation.



Baughman KRUG NORTH - PHASE II
LINE 2
 SANITARY SEWER IMPROVEMENTS

Baughman Company, P.A. 315 Ellis St. Wichita, KS 67211 P 316-262-7771 F 316-262-0149
 ENGINEERING | SURVEYING | PLANNING | LANDSCAPE ARCHITECTURE

PROJECT NUMBER 468-83789	DESIGN TMS
REVISIONS	APPROVED DATE 06/05
	SCALE Noted SHEET 9 OF 20

KrugNorth2ndPhase1.SSS 0504-E229