

EROSION CONTROL PLAN LEGEND
(Installation Details Found in the SMP2 Plan)

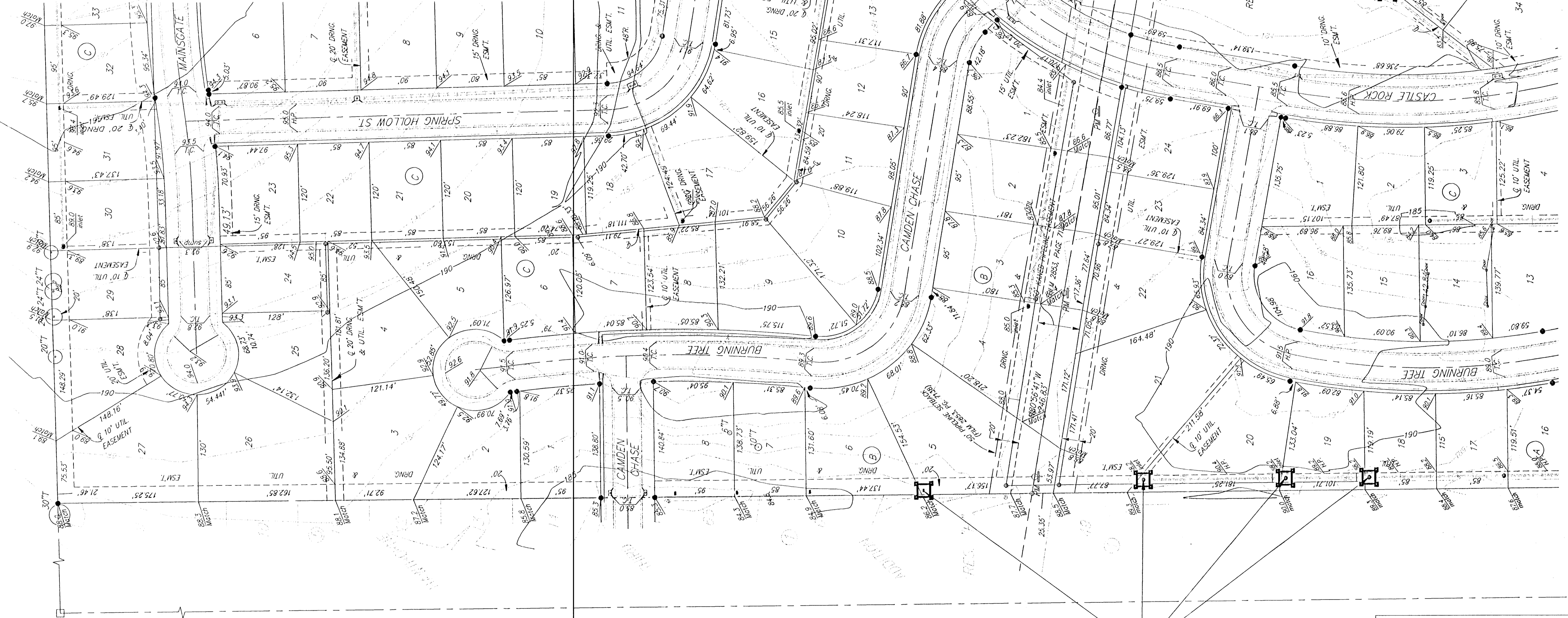
- LIGHT STONE RIP-RAP
- DROP INLET PROTECTION
- CURB INLET PROTECTION
- STRAW BALE BARRIERS
- SILT FENCING
- EARTH DIKES
- VEGETATED AREA LEFT UNDISTURBED

NO SCALE

EROSION CONTROL MEASURE	UNITS	QUANTITY
SILT FENCE	L.F.	MAINTAIN
RIPRAP (Maintain)	S.Y.	0
DROP INLET BARRIER	EA.	MAINTAIN
CURB INLET BARRIER	EA.	0
STRAW BALE DITCH CHECK	EA.	0
EARTHEN DIKES (Maintain)	L.F.	0
CURLEX	S.Y.	0
POND E.C. BLANKET	S.Y.	0
Construction Entrance	EA.	1

QUANTITIES ARE FOR INFORMATION ONLY!
CONTRACTOR SHALL VERIFY QUANTITIES PER
FINAL BID QUANTITY SHEET.

Scale: 1" = 60'



Install one construction entrance onto existing paved roadway per detail, sheet 18.

Maintain Drop Inlet Protection.

Remove trees ONLY as necessary for construction. Cost of removal to be incidental to lump sum bid item "Site Clearing & Restoration".

NOTE: Contractor shall remove & replace existing erosion control measures as necessary for construction. Contractor shall be required to maintain all on-site erosion control items until final acceptance by the City of Wichita.

EROSION CONTROL PLAN

Baughman

Krug North 2nd Add. - PH. I

Baughman Company, P.A. 315 Ellis St. Wichita, KS 67211 P 316-263-7271 F 316-263-0149
ENGINEERING | SURVEYING | PLANNING | LANDSCAPE ARCHITECTURE

PROJECT NUMBER	DESIGN	DRAWN
REVISIONS	APPROVED	TMS
	DATE	05/05
	SCALE	AS SHOWN
	SHEET	15 OF 20

KrugNorth2ndUthset/ECplan 0504E229