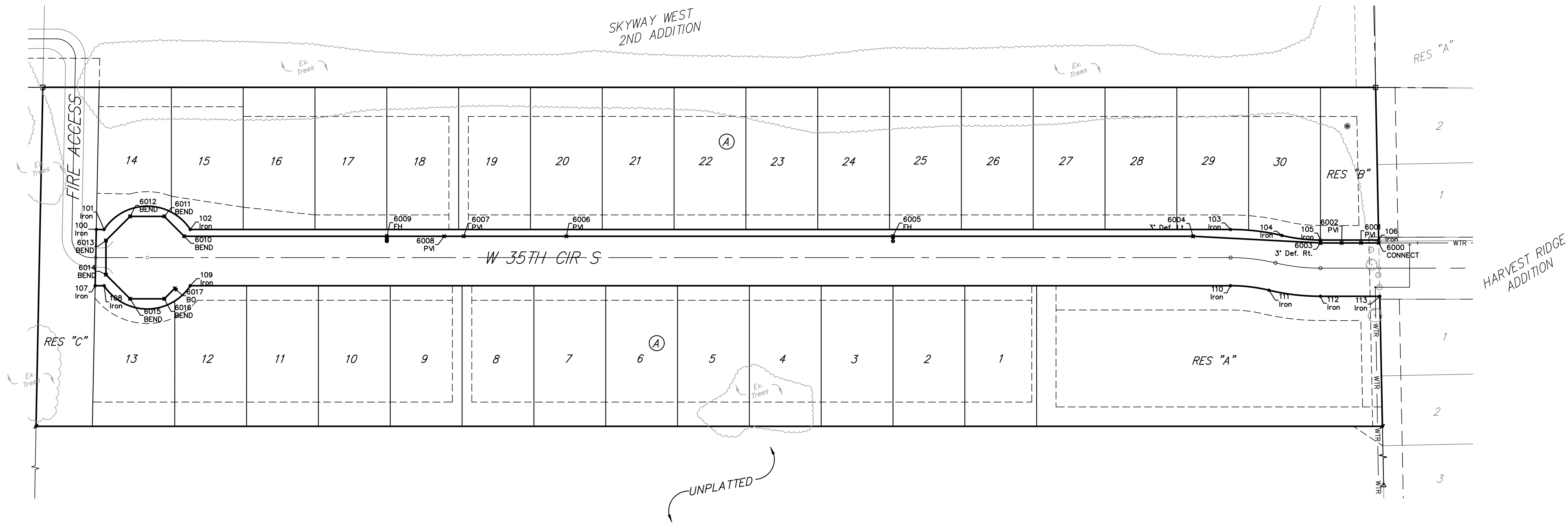
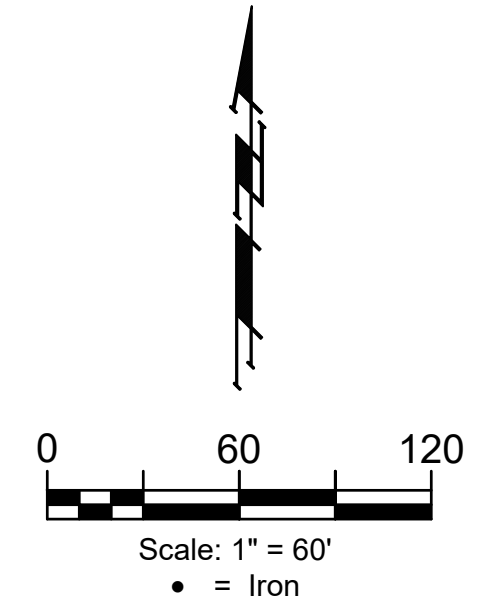


BENCHMARK #1:  
CROSS CUT IN SQUARE CUT, TOP OF CURB AT WEST END OF CURB RETURN, NORTHWEST CORNER OF SHEFFORD AND W 35TH ST S, 14.5' SOUTH & 5.0' WEST OF THE SOUTHWEST CORNER OF LOT 1, BLOCK D, HARVEST RIDGE ADDITION. ELEV. = 1336.39 (NAVD88)

BENCHMARK #2:  
CROSS CUT IN SQUARE CUT ON TOP FRONT CENTER OF CATCH BASIN, WEST SIDE OF HOLLYWOOD, 4.6' NORTH & 12.8' EAST OF SOUTHWEST CORNER OF LOT 2, BLOCK C, HARVEST RIDGE ADDITION. ELEVATION = 1335.39 (NAVD88)



WTR POINTS			
Point #	Northing	Easting	Description
6000	1,664,048.37	1,610,382.16	CONNECT
6001	1,664,047.54	1,610,363.91	PVI
6002	1,664,046.63	1,610,343.93	PVI
6003	1,664,045.64	1,610,322.16	3" Def. Rt.
6004	1,664,046.56	1,610,190.70	3" Def. Lt.
6005	1,664,032.52	1,609,881.81	FH
6006	1,664,017.24	1,609,545.65	PVI
6007	1,664,012.44	1,609,440.00	PVI
6008	1,664,011.54	1,609,420.01	PVI
6009	1,664,008.85	1,609,360.84	FH
6010	1,663,999.37	1,609,152.26	BEND
6011	1,664,018.92	1,609,130.86	BEND
6012	1,664,017.32	1,609,095.69	BEND
6013	1,663,991.32	1,609,071.95	BEND
6014	1,663,956.15	1,609,073.54	BEND
6015	1,663,932.41	1,609,099.54	BEND
6016	1,663,934.01	1,609,134.71	BEND
6017	1,663,945.31	1,609,145.04	BO

COORDINATES			
Point #	Northing	Easting	Description
100	1,664,002.25	1,609,061.51	Iron
101	1,664,002.62	1,609,069.57	Iron
102	1,664,006.65	1,609,158.20	Iron
103	1,664,055.30	1,610,228.98	Iron
104	1,664,051.49	1,610,282.25	Iron
105	1,664,048.64	1,610,322.03	Iron
106	1,664,051.36	1,610,381.97	Iron
107	1,663,944.26	1,609,062.98	Iron
108	1,663,944.68	1,609,072.20	Iron
109	1,663,948.71	1,609,160.83	Iron
110	1,663,997.36	1,610,231.61	Iron
111	1,663,994.51	1,610,271.39	Iron
112	1,663,990.70	1,610,324.66	Iron
113	1,663,983.48	1,610,385.76	Iron

**CHASE DUSTIN WARNER**  
LICENSED PROFESSIONAL ENGINEER  
KANSAS  
11/29/2023  
29833

**BAUGHMAN COMPANY**  
315 Ellis St.  
Wichita, KS 67211  
316-262-7271  
BaughmanCo.com

SKYWAY WEST  
6TH ADDITION

**COORDINATES**

WATER DISTRIBUTION SYSTEM

PROJECT NUMBER:  
448-2023-007274

DESIGN: CDW DRAWN: CDW  
DATE: July 28, 2023

SHEET **13** OF **14**

File: E:\Projects\Skyway West 6th\_22-05-P786\Engineering\Phase 1\WTR\WTR.dwg