

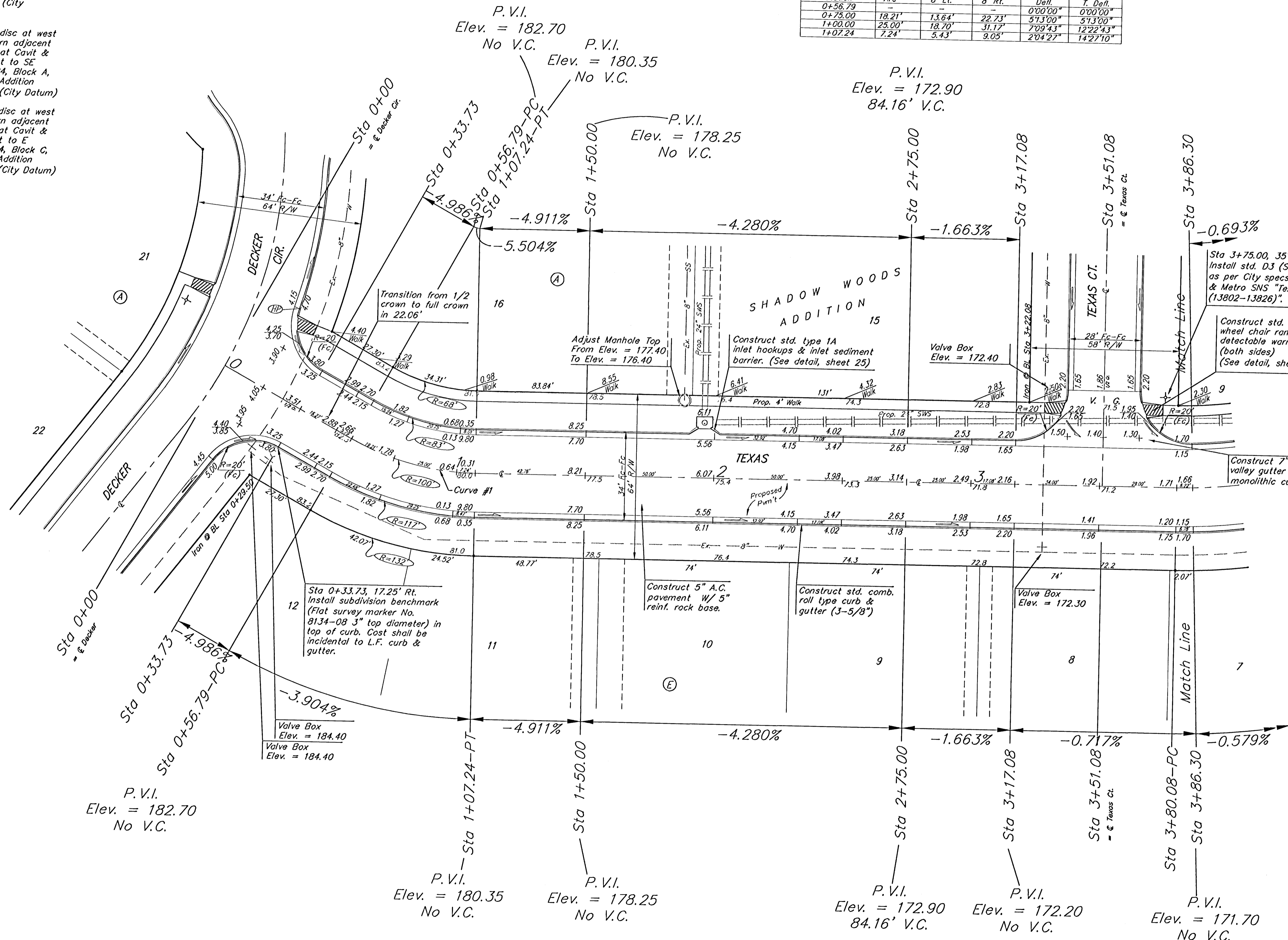
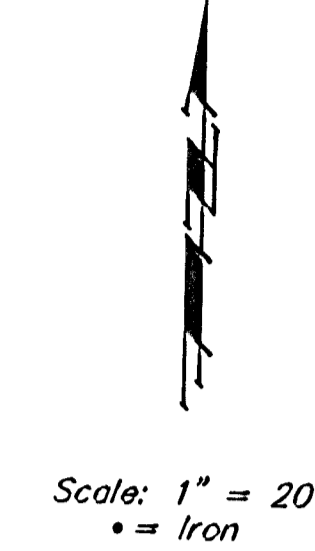
BENCHMARKS:
 BM #1: Small RR spike in west face of PP, east side of 135th St. W, east of SE corner of Lot 1, Block A, Shadow Woods Addition.
 Elev. = 159.37 (City Datum)

BM #2: C.O.W. disc at west end of NW return adjacent to fire hydrant at Cavit & Decker, adjacent to SE corner of Lot 24, Block A, Shadow Woods Addition.
 Elev. = 187.31 (City Datum)

BM #3: C.O.W. disc at west end of SW return adjacent to fire hydrant at Cavit & Burton, adjacent to E corner of Lot 24, Block C, Shadow Woods Addition.
 Elev. = 193.19 (City Datum)

Curve #1
 Curve Data Based on Centerline
 Rad. = 100' Delta = 28° 54' 20" Tangent = 25.77'
 Arc = 50.45' L.C. = 49.92' Def/Fl. = 17.18864 Min.

Station	FACE CHORD LENGTHS		Defl.	T. Defl.
	B' Lt.	B' Rt.		
0+56.79	-	-	0'00"00"	0'00"00"
0+75.00	19.21'	13.64'	22'73"	51'30"
1+00.00	23.00'	18.70'	31.17'	70'9'43"
1+07.24	7.24'	5.43'	9.05'	14'27'10"



NOTE: ROLL TYPE CURB & GUTTER TO BE CONSTRUCTED ON THE PAVEMENT SHOWN ON THIS SHEET. TOP OF CURB ELEVATIONS ARE GIVEN FOR FULL HEIGHT CURB.

	SHADOW WOODS ADD. PH. III
	TEXAS
STA 0+00 TO STA 3+86.30	
Baughman Company, P.A. 315 Ellis St. Wichita, KS 67211 F316262721 F3162620149	
ENGINEERING SURVEYING PLANNING LANDSCAPE ARCHITECTURE	
PROJECT NUMBER 472-83723	DESIGN TMS
REVISIONS	APPROVED DATE 08/05
	SCALE Noted
	SHEET 7 OF 39
ShadowWoods\Phase3\Sta1	
0505E242	