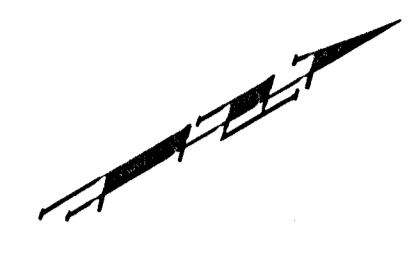


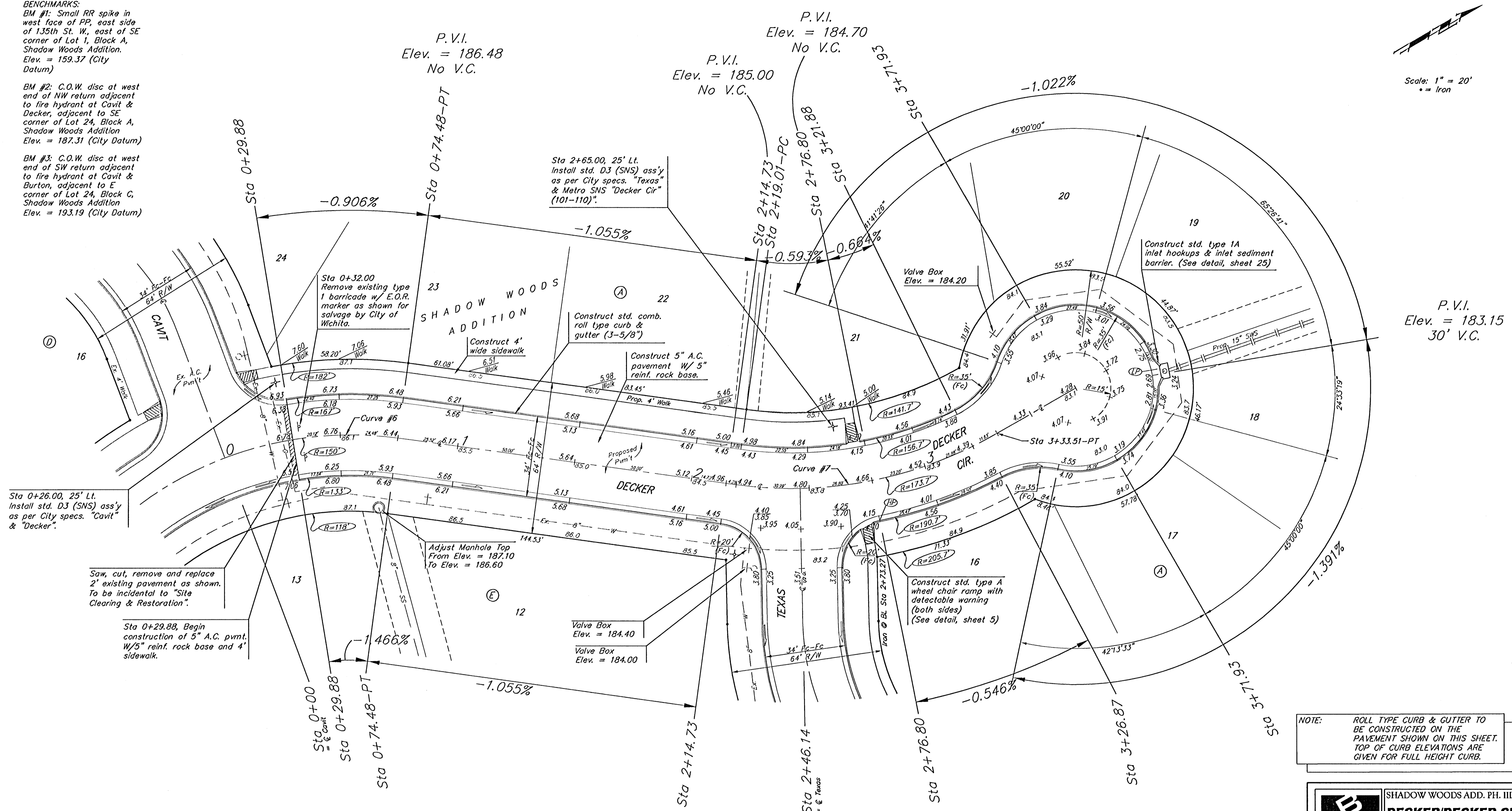
**BENCHMARKS:**  
 BM #1: Small RR spike in west face of PP, east side of 135th St. W., east of SE corner of Lot 1, Block A, Shadow Woods Addition. Elev. = 159.37 (City Datum)

BM #2: C.O.W. disc at west end of NW return adjacent to fire hydrant at Cavit & Decker, adjacent to SE corner of Lot 24, Block A, Shadow Woods Addition. Elev. = 187.31 (City Datum)

BM #3: C.O.W. disc at west end of SW return adjacent to fire hydrant at Cavit & Burton, adjacent to E corner of Lot 24, Block C, Shadow Woods Addition. Elev. = 193.19 (City Datum)



Scale: 1" = 20'  
 • = Iron



P.V.I.  
 Elev. = 186.48  
 No V.C.

P.V.I.  
 Elev. = 185.00  
 No V.C.

P.V.I.  
 Elev. = 184.70  
 No V.C.

P.V.I.  
 Elev. = 183.15  
 30' V.C.

Sta 0+26.00, 25' Lt.  
 Install std. D3 (SNS) ass'y as per City specs. "Cavit" & "Decker".

Saw, cut, remove and replace 2" existing pavement as shown. To be incidental to "Site Clearing & Restoration".

Sta 0+29.88, Begin construction of 5" A.C. pvmt. w/5" reinf. rock base and 4' sidewalk.

Sta 2+65.00, 25' Lt.  
 Install std. D3 (SNS) ass'y as per City specs. "Texas" & Metro SNS "Decker Cir" (101-110)".

Valve Box  
 Elev. = 184.20

Valve Box  
 Elev. = 184.40  
 Valve Box  
 Elev. = 184.00

Construct std. type A wheel chair ramp with detectable warning (both sides) (See detail, sheet 5)

Construct std. type 1A inlet hookups & inlet sediment barrier. (See detail, sheet 25)

NOTE: ROLL TYPE CURB & GUTTER TO BE CONSTRUCTED ON THE PAVEMENT SHOWN ON THIS SHEET. TOP OF CURB ELEVATIONS ARE GIVEN FOR FULL HEIGHT CURB.

P.V.I.  
 Elev. = 186.48  
 No V.C.

Curve #6  
 Curve Data Based on Centerline  
 Rad. = 150' Delta = 1702'15" Tangent = 22.47'  
 Arc = 44.6' L.C. = 44.44' Del/Ft. = 11.46020 Min.

Station	Arc	FACE CHORD LENGTHS		Defl.	T. Defl.
		8' Lt.	8' Rt.		
0+29.88	-	-	-	0'00"00"	0'00"00"
0+50.00	20.12'	23.46'	16.76'	3'50"35"	3'50"35"
0+74.48	24.48'	28.53'	20.38'	4'40"33"	8'31"07"

Curve #7  
 Curve Data Based on Centerline  
 Rad. = 173.7' Delta = 37'46"08" Tangent = 59.42'  
 Arc = 114.5' L.C. = 112.44' Del/Ft. = 9.89578 Min.

Station	Arc	FACE CHORD LENGTHS		Defl.	T. Defl.
		8' Lt.	8' Rt.		
2+19.01	-	-	-	0'00"00"	0'00"00"
2+25.00	5.99'	5.13'	6.85'	0'59"16"	0'59"16"
2+50.00	25.00'	21.38'	28.57'	4'07"23"	5'06"40"
2+75.00	25.00'	21.38'	28.57'	4'07"23"	9'14"04"
3+00.00	25.00'	21.38'	28.57'	4'07"23"	13'21"27"
3+21.88	21.88'	18.72'	25.01'	3'56"31"	16'57"59"
3+26.87	4.99'	4.27'	5.71'	0'49"23"	17'47"21"
3+33.51	6.64'	5.68'	7.60'	1'05"43"	18'53"04"

**Baughman** SHADOW WOODS ADD. PH. III  
**DECKER/DECKER CIR.**  
 STA 0+00 TO STA 3+71.93

Baughman Company, P.A. 315 Ellis St. Wichita, KS 67211 P.3162421011 F.3162421019  
 ENGINEERING | SURVEYING | PLANNING | LANDSCAPE ARCHITECTURE

PROJECT NUMBER 41283723	DESIGN TMS
REVISIONS	APPROVED DATE 08/05
	SCALE Noted
	SHEET 10 OF 39

Shadow Woods (Phase) Street 0505-E242