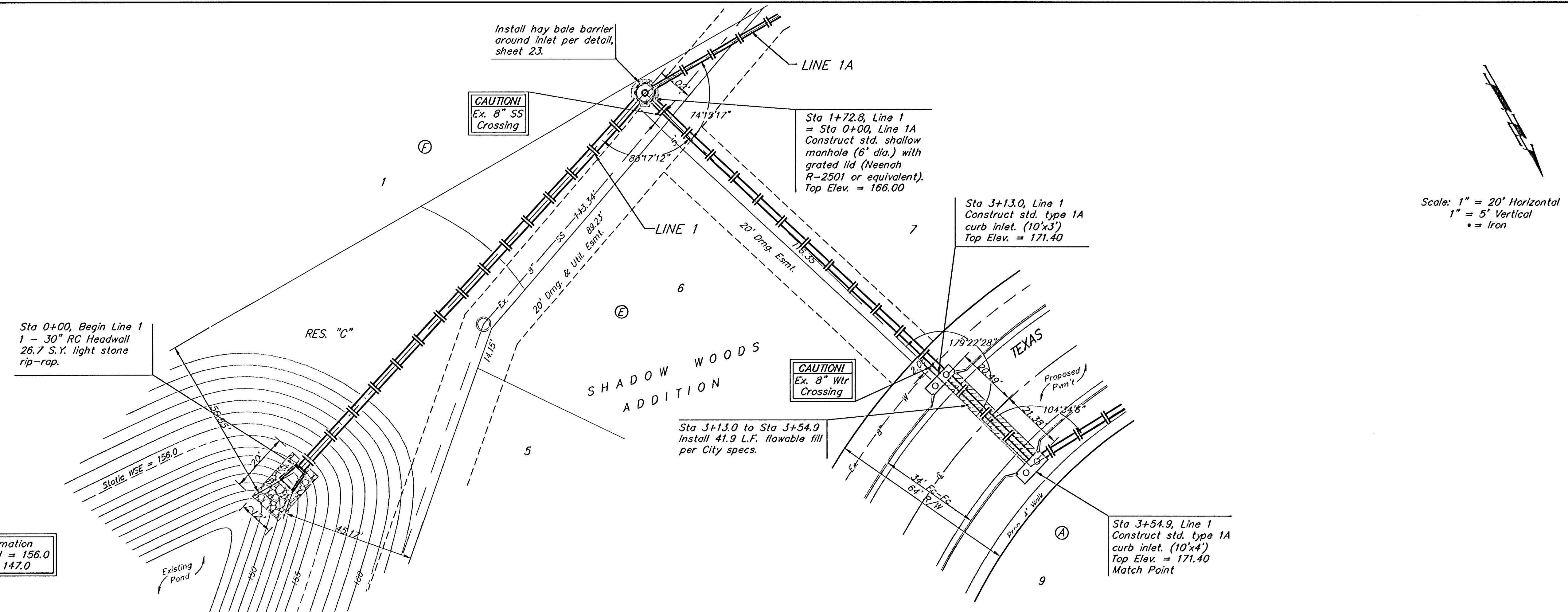


BENCHMARKS:
 BM #1: Small RR spike in west face of PP, east side of 135th St. W., east of SE corner of Lot 1, Block A, Shadow Woods Addition. Elev. = 159.37 (City Datum)

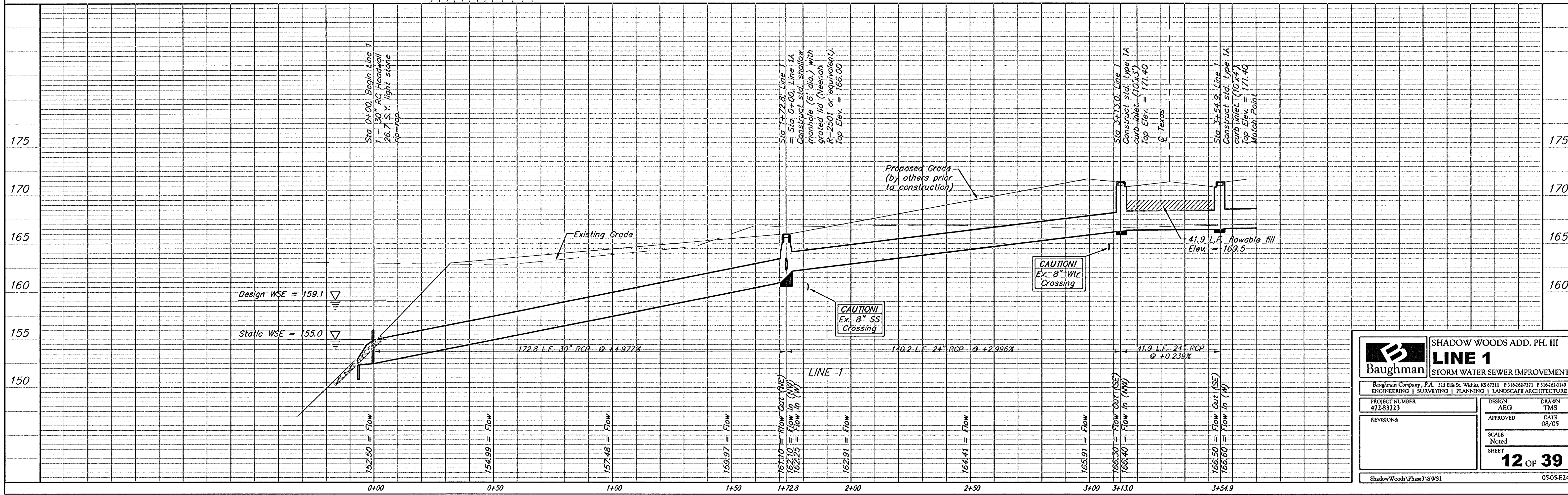
BM #2: C.O.W. disc at west end of NW return adjacent to fire hydrant at Cavit & Decker, adjacent to SE corner of Lot 24, Block A, Shadow Woods Addition. Elev. = 187.31 (City Datum)

BM #3: C.O.W. disc at west end of SW return adjacent to fire hydrant at Cavit & Burton, adjacent to E corner of Lot 24, Block C, Shadow Woods Addition. Elev. = 193.19 (City Datum)



Pond Information
 Static Pool = 156.0
 Bottom = 147.0

Scale: 1" = 20' Horizontal
 1" = 5' Vertical
 • = Iron



	SHADOW WOODS ADD. PH. III	
	LINE 1	
STORM WATER SEWER IMPROVEMENTS		
<small>Baughman Company, P.A. 315 Ella & Wilbur, KS 67111 F3162637271 F316262149 ENGINEERING SURVEYING PLANNING LANDSCAPE ARCHITECTURE</small>		
PROJECT NUMBER 412-83723	DESIGN AEG	DRAWN TMS
REVISIONS	APPROVED	DATE 08/05
SCALE Noted		SHEET 12 OF 39
ShadowWoods\Phase3\SWS1		05-05-E242