

BENCHMARKS:
 BM #1: Small RR spike in west face of PP, east side of 135th St. W., east of SE corner of Lot 1, Block A, Shadow Woods Addition. Elev. = 159.37 (City Datum)

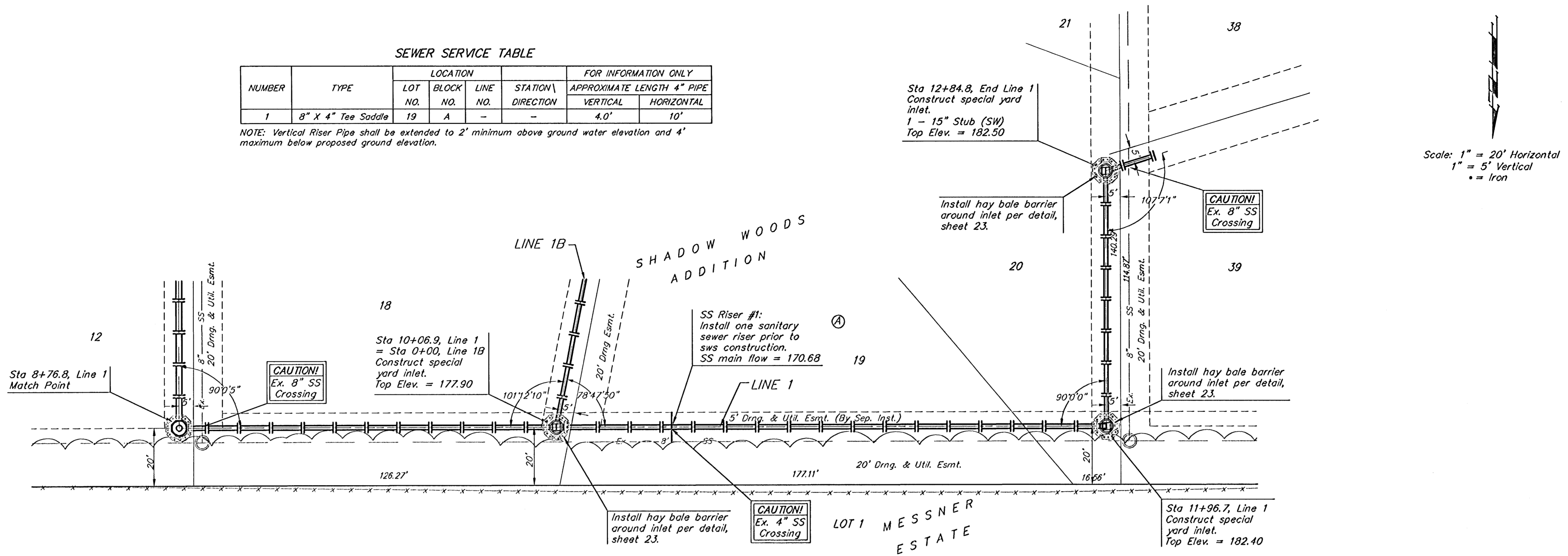
BM #2: C.O.W. disc at west end of NW return adjacent to fire hydrant at Cavit & Decker, adjacent to SE corner of Lot 24, Block A, Shadow Woods Addition. Elev. = 187.31 (City Datum)

BM #3: C.O.W. disc at west end of SW return adjacent to fire hydrant at Cavit & Burton, adjacent to E corner of Lot 24, Block C, Shadow Woods Addition. Elev. = 193.19 (City Datum)

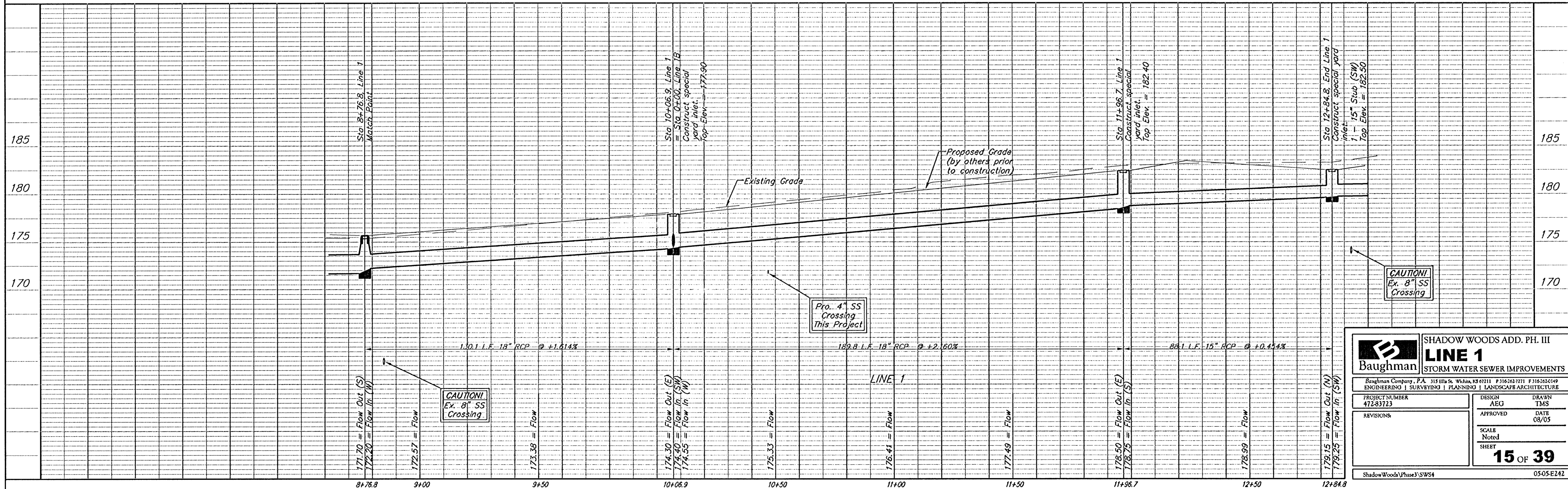
SEWER SERVICE TABLE

| NUMBER | TYPE | LOCATION | | | FOR INFORMATION ONLY | |
|--------|--------------------|----------|-----------|----------|----------------------|------------------------------|
| | | LOT NO. | BLOCK NO. | LINE NO. | STATION \ DIRECTION | APPROXIMATE LENGTH 4" PIPE |
| 1 | 8" X 4" Tee Saddle | 19 | A | - | - | VERTICAL 4.0' HORIZONTAL 10' |

NOTE: Vertical Riser Pipe shall be extended to 2' minimum above ground water elevation and 4' maximum below proposed ground elevation.



Scale: 1" = 20' Horizontal
 1" = 5' Vertical
 • = Iron



| | | |
|---|---------------------------|---------------|
| | SHADOW WOODS ADD. PH. III | |
| | LINE 1 | |
| STORM WATER SEWER IMPROVEMENTS | | |
| <small>Baughman Company, P.A. 319 1/2th St. W., Waukesha, WI 53181 P 316-263-7111 F 316-263-0149 ENGINEERING SURVEYING PLANNING LANDSCAPE ARCHITECTURE</small> | | |
| PROJECT NUMBER 472-83723 | DESIGN AEG | DRAWN TMS |
| REVISIONS: | APPROVED | DATE 08/05 |
| | SCALE | NOTED |
| | 15 OF 39 | |
| Shadow Woods (Phase 3) SWS4 | | 05-05-E242 |