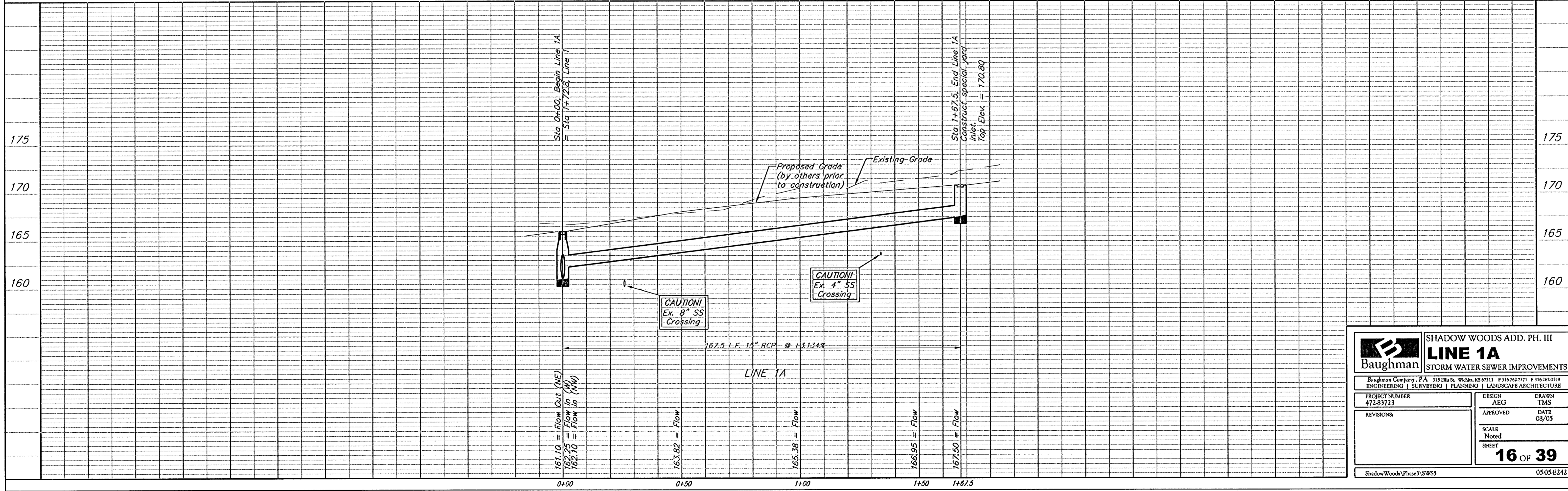
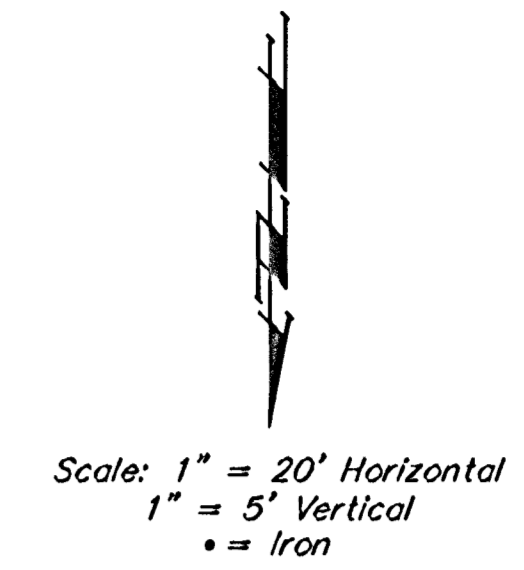
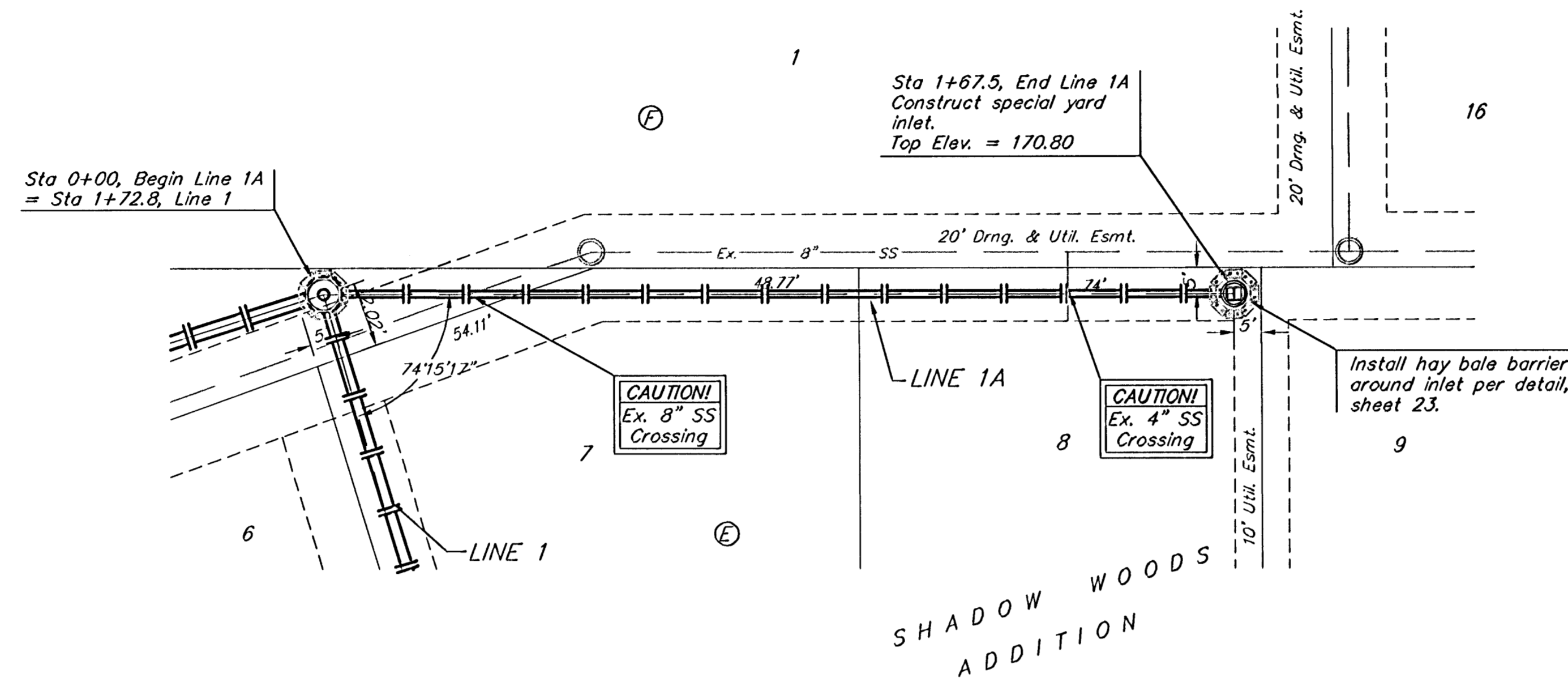


**BENCHMARKS:**  
 BM #1: Small RR spike in west face of PP, east side of 135th St. W., east of SE corner of Lot 1, Block A, Shadow Woods Addition. Elev. = 159.37 (City Datum)

BM #2: C.O.W. disc at west end of NW return adjacent to fire hydrant at Cavit & Decker, adjacent to SE corner of Lot 24, Block A, Shadow Woods Addition. Elev. = 187.31 (City Datum)

BM #3: C.O.W. disc at west end of SW return adjacent to fire hydrant at Cavit & Burton, adjacent to E corner of Lot 24, Block C, Shadow Woods Addition. Elev. = 193.19 (City Datum)



		SHADOW WOODS ADD. PH. III	
		<b>LINE 1A</b>	
		STORM WATER SEWER IMPROVEMENTS	
<small>Baughman Company, P.A. 315 Hill St. W. John, KS 67111 P 3162827111 F 3162820169          ENGINEERING   SURVEYING   PLANNING   LANDSCAPE ARCHITECTURE</small>			
PROJECT NUMBER 472-83723	DESIGN AEG	DRAWN TMS	APPROVED DATE 08/05
REVISIONS:	SCALE Noted		
	SHEET <b>16 OF 39</b>		
ShadowWoods\Phase3\SWS3		0505E242	