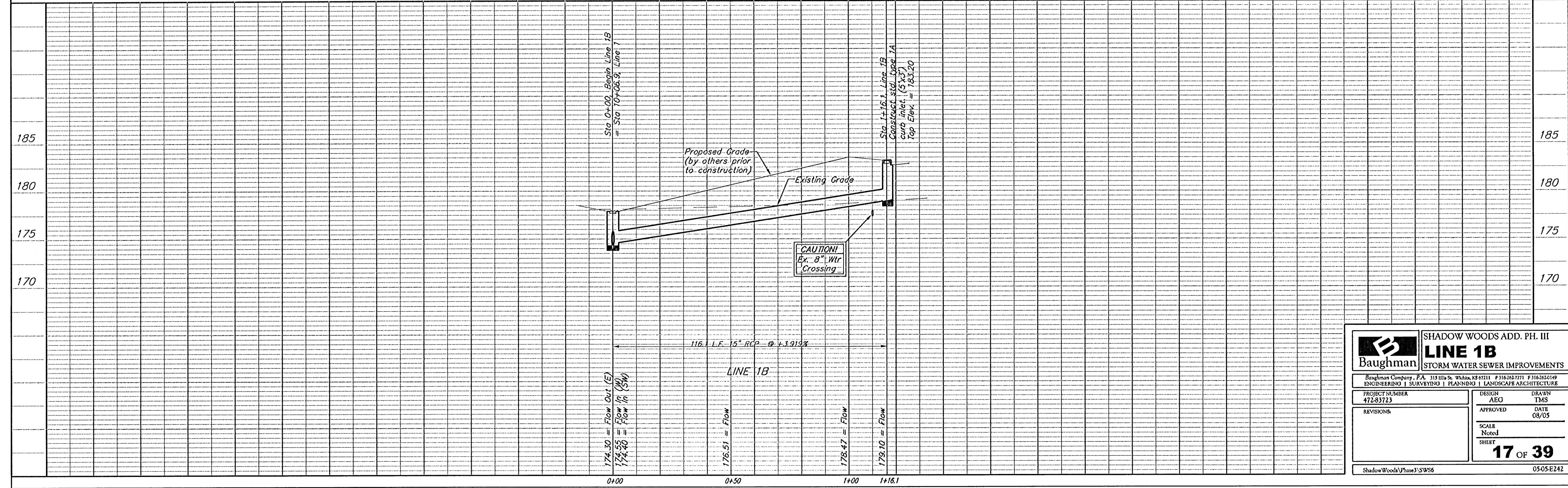
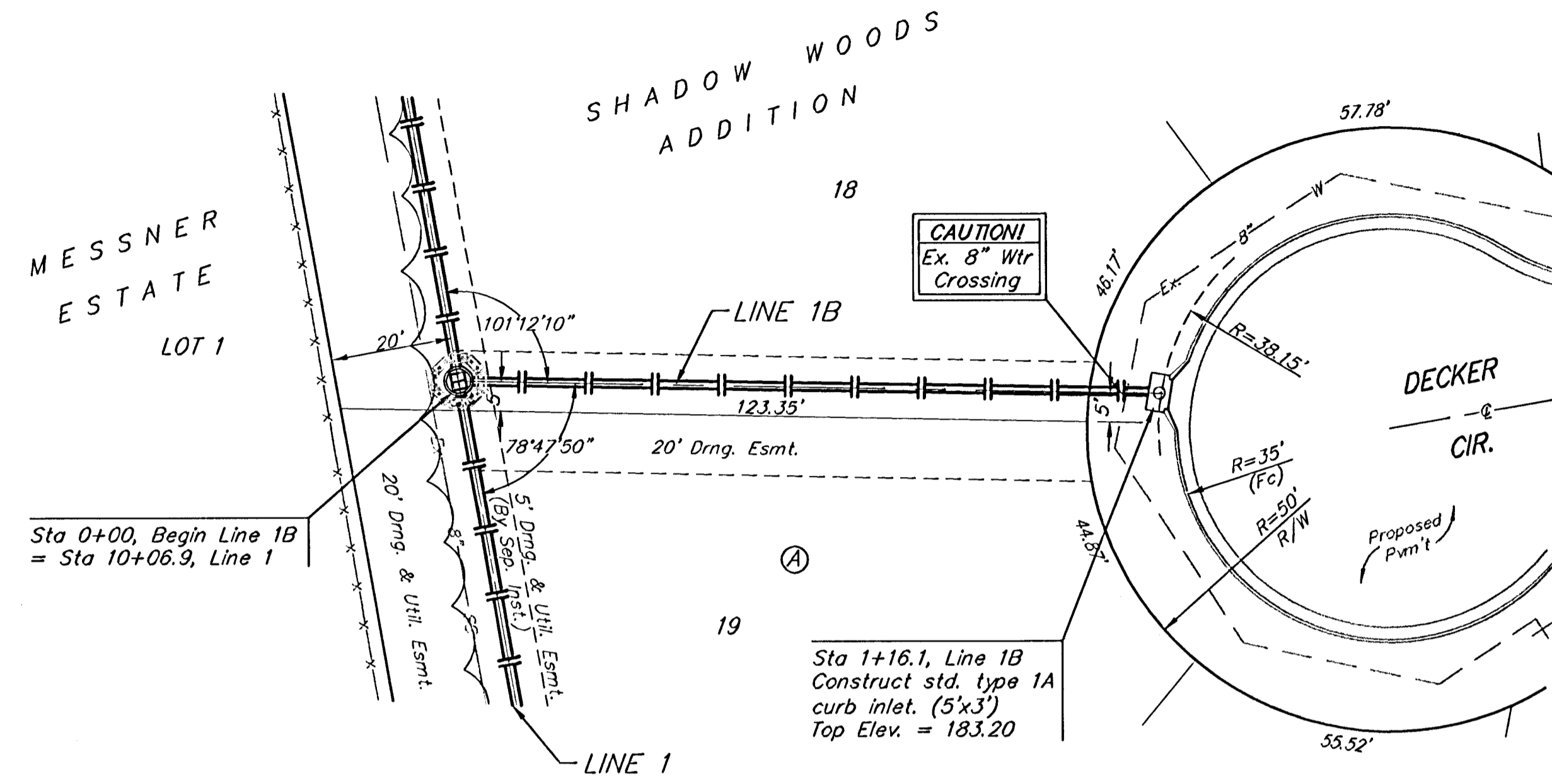


BENCHMARKS:
 BM #1: Small RR spike in west face of PP, east side of 135th St. W, east of SE corner of Lot 1, Block A, Shadow Woods Addition. Elev. = 159.37 (City Datum)

BM #2: C.O.W. disc at west end of NW return adjacent to fire hydrant at Cavit & Decker, adjacent to SE corner of Lot 24, Block A, Shadow Woods Addition. Elev. = 187.31 (City Datum)

BM #3: C.O.W. disc at west end of SW return adjacent to fire hydrant at Cavit & Burton, adjacent to E corner of Lot 24, Block C, Shadow Woods Addition. Elev. = 193.19 (City Datum)

Scale: 1" = 20' Horizontal
 1" = 5' Vertical
 • = Iron



| | | | |
|--------------------------------|----------------|---|--|
| | | SHADOW WOODS ADD. PH. III | |
| | | LINE 1B | |
| STORM WATER SEWER IMPROVEMENTS | | <small>Baughman Company, P.A. 319 Elm St. W. Kalamazoo, MI 49001 P 316-262-7111 F 316-262-0149 ENGINEERING SURVEYING PLANNING LANDSCAPE ARCHITECTURE</small> | |
| PROJECT NUMBER 472-83723 | DESIGN AEG | DRAWN TMS | |
| REVISIONS: | APPROVED | DATE 08/05 | |
| | SCALE Noted | SHEET | |
| | | 17 OF 39 | |
| ShadowWoods\Phase3\SWS6 | | 05-05-E242 | |