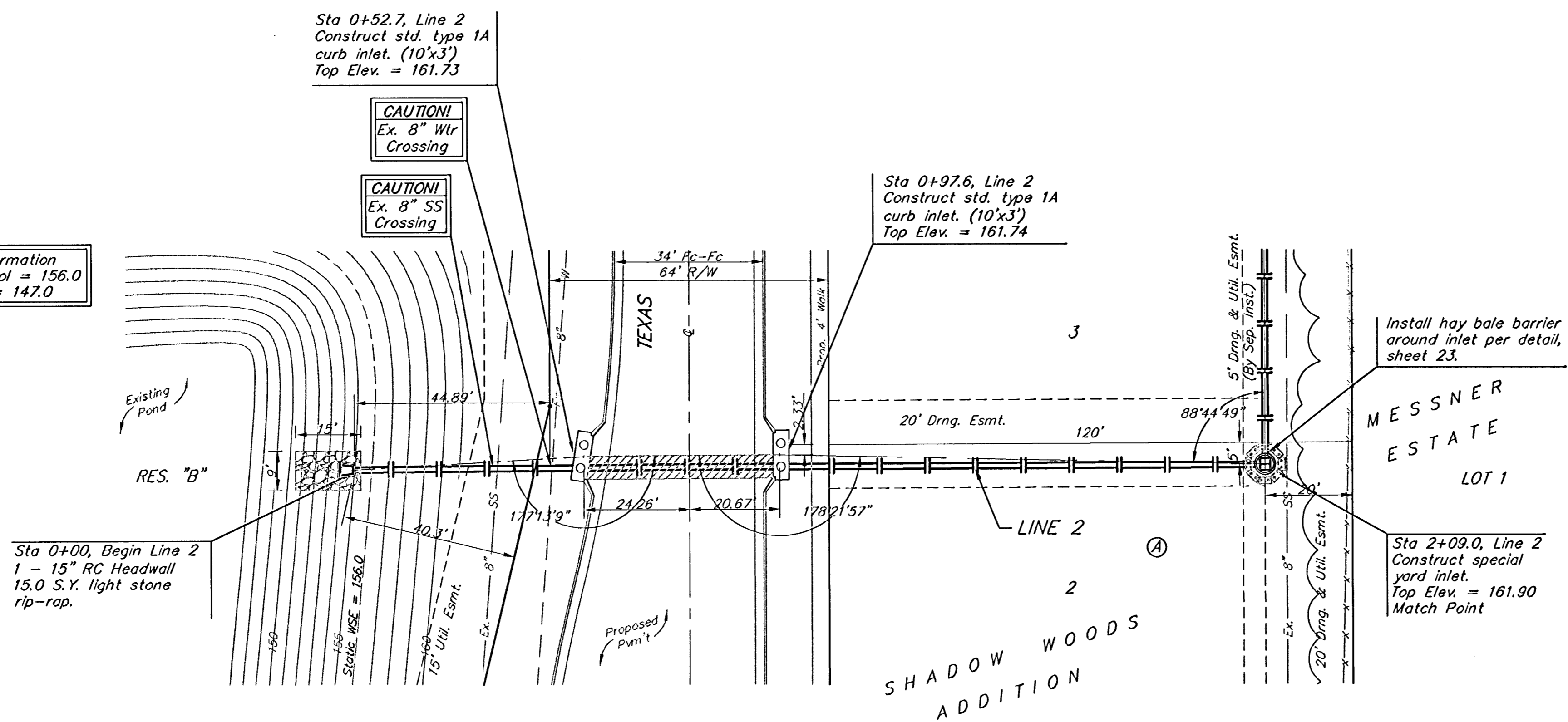


BENCHMARKS:
 BM #1: Small RR spike in west face of PP, east side of 135th St. W., east of SE corner of Lot 1, Block A, Shadow Woods Addition.
 Elev. = 159.37 (City Datum)

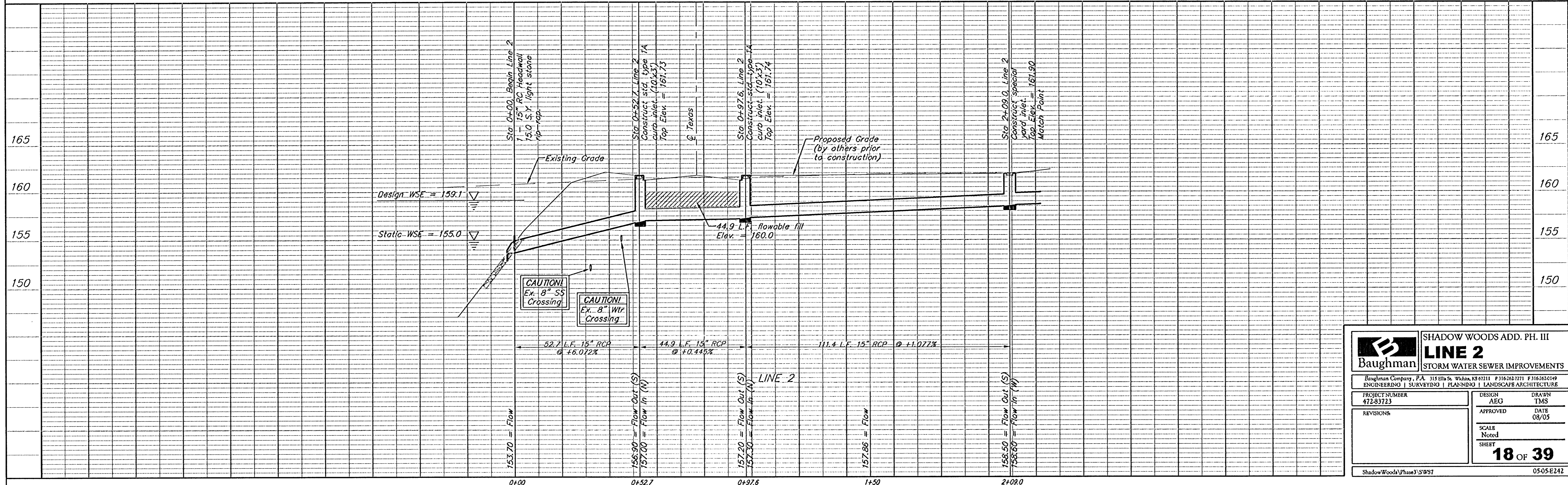
BM #2: C.O.W. disc at west end of NW return adjacent to fire hydrant at Cavit & Decker, adjacent to SE corner of Lot 24, Block A, Shadow Woods Addition.
 Elev. = 187.31 (City Datum)

BM #3: C.O.W. disc at west end of SW return adjacent to fire hydrant at Cavit & Burton, adjacent to E corner of Lot 24, Block C, Shadow Woods Addition.
 Elev. = 193.19 (City Datum)

Pond Information
 Static Pool = 156.0
 Bottom = 147.0



Scale: 1" = 20' Horizontal
 1" = 5' Vertical
 • = Iron



		SHADOW WOODS ADD. PH. III	
		LINE 2	
STORM WATER SEWER IMPROVEMENTS			
<small>Baughman Company, P.A. 315 1/2 St. W. Suite 303 60111 F316323711 F316323719 ENGINEERING SURVEYING PLANNING LANDSCAPE ARCHITECTURE</small>			
PROJECT NUMBER 47283723	DESIGN AEG	DRAWN TMS	
REVISIONS:	APPROVED	DATE 08/05	
	SCALE Noted		
	18 OF 39		
ShadowWoods\Phase3\SW37			05-05-E242