

BENCHMARKS:
 BM #1: Small RR spike in west face of PP, east side of 135th St. W., east of SE corner of Lot 1, Block A, Shadow Woods Addition. Elev. = 159.37 (City Datum)

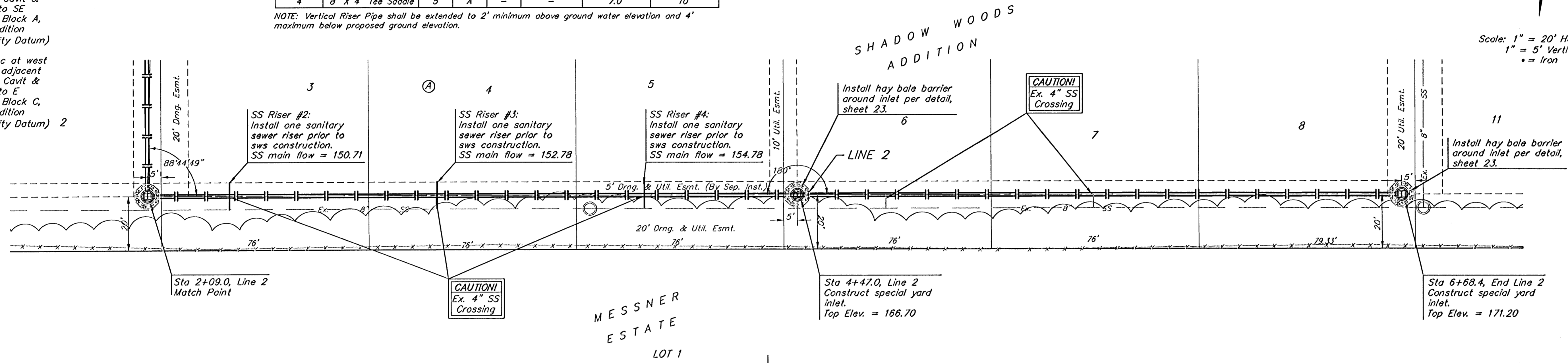
BM #2: C.O.W. disc at west end of NW return adjacent to fire hydrant at Cavit & Decker, adjacent to SE corner of Lot 24, Block A, Shadow Woods Addition. Elev. = 187.31 (City Datum)

BM #3: C.O.W. disc at west end of SW return adjacent to fire hydrant at Cavit & Burton, adjacent to E corner of Lot 24, Block C, Shadow Woods Addition. Elev. = 193.19 (City Datum) 2

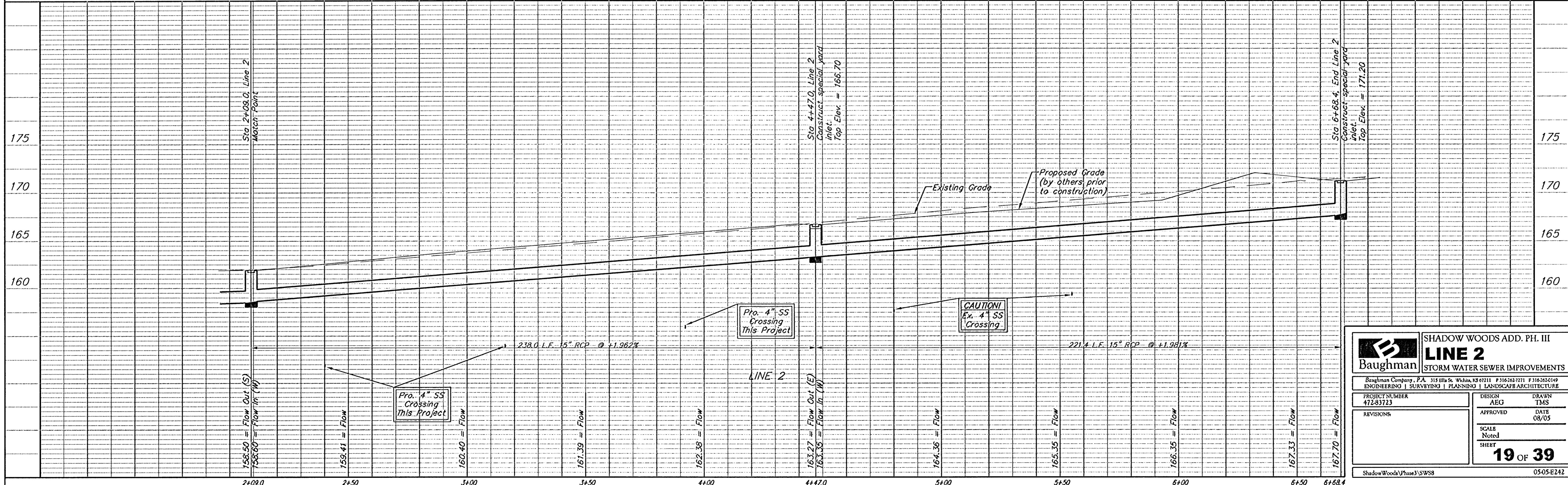
SEWER SERVICE TABLE

NUMBER	TYPE	LOCATION				FOR INFORMATION ONLY	
		LOT NO.	BLOCK NO.	LINE NO.	STATION DIRECTION	APPROXIMATE LENGTH 4" PIPE	VERTICAL
2	8" X 4" Tee Saddle	3	A	-	-	8.0'	10'
3	8" X 4" Tee Saddle	4	A	-	-	7.5'	10'
4	8" X 4" Tee Saddle	5	A	-	-	7.0'	10'

NOTE: Vertical Riser Pipe shall be extended to 2' minimum above ground water elevation and 4' maximum below proposed ground elevation.



Scale: 1" = 20' Horizontal
 1" = 5' Vertical
 • = Iron



Baughman SHADOW WOODS ADD. PH. III
LINE 2
 STORM WATER SEWER IMPROVEMENTS

Baughman Company, P.A. 315 8th St. W., White, NJ 07111 P 3162627211 F 316262149
 ENGINEERING | SURVEYING | PLANNING | LANDSCAPE ARCHITECTURE

PROJECT NUMBER 472-83723	DESIGN AEG	DRAWN TMS
REVISIONS	APPROVED	DATE 08/05
SCALE Noted		SHEET 19 OF 39

ShadowWoods(Phase)SWS8 05-05-E242