

SHADOW WOODS ADDITION WICHITA, SEDGWICK COUNTY, KANSAS

Maple Group, L.L.C.

Jay W. Russell

Member

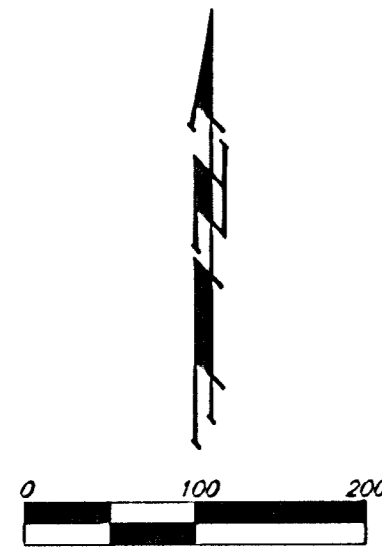
(See Page 1 for Owner's Acknowledgment)

MINIMUM BUILDING PAD ELEVATIONS FOR LOWEST OPENING TO THE STRUCTURES		
LOT	BLOCK	ELEVATION CITY DATUM
1-24	D	177.2
1-7	E	160.5

BENCHMARK:
135th St. W. & Maple -
City of Wichita Benchmark Bore
on NW corner of NE corner
of intersection.
34.00' SW to Section Cor. Iron.
Elev. = 150.29 City Datum
(1337.69 NGVD29)

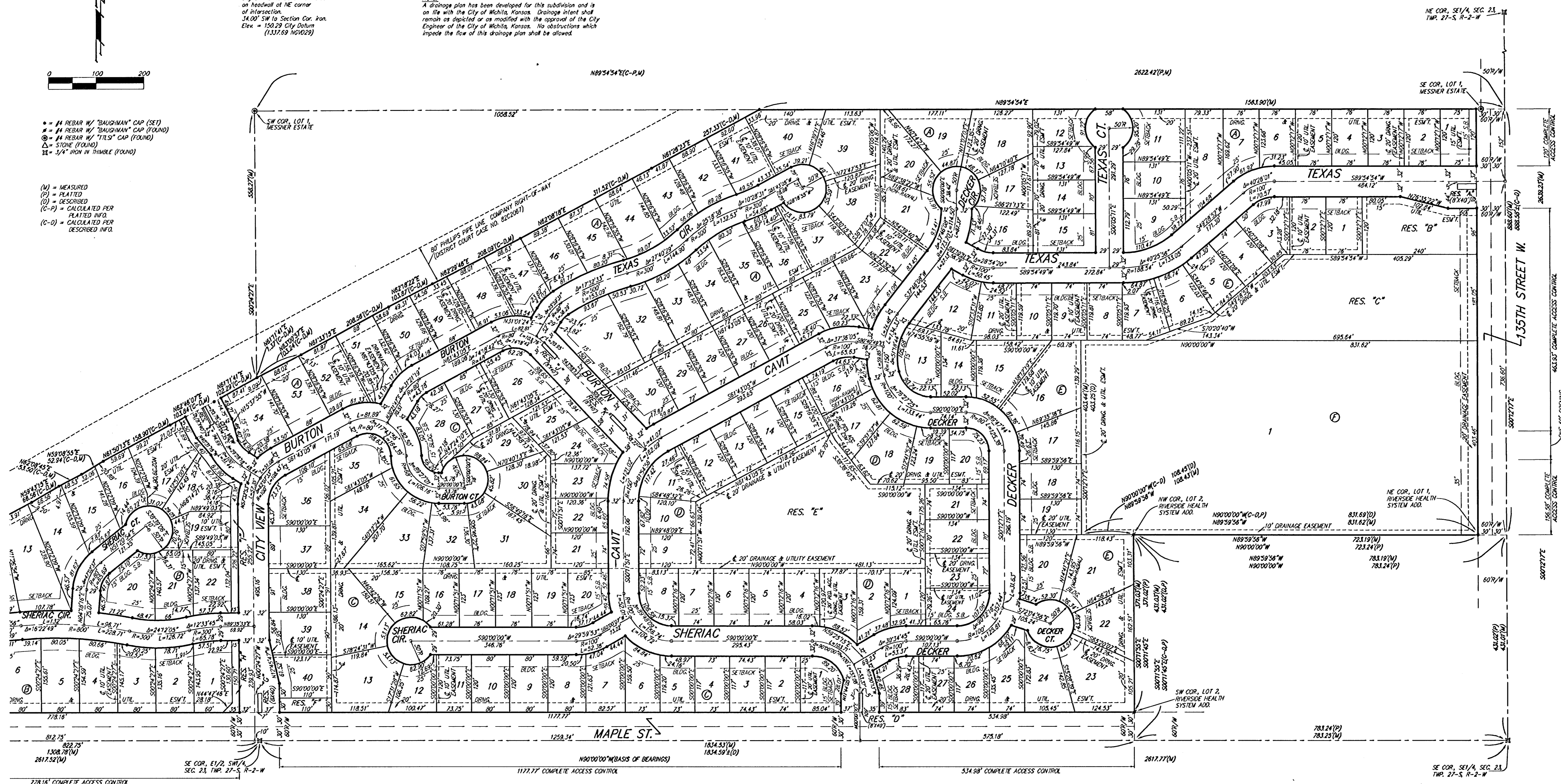
NOTE:
A master grading plan for drainage has been developed for this subdivision and is on file with the City of Wichita, Kansas. All drainage easements, rights-of-way, or reserves shall remain as established grades or as modified with the approval of the City Engineer of the City of Wichita, Kansas. No obstructions which impede the flow of this drainage system shall be allowed.

NOTE:
A drainage plan has been developed for this subdivision and is on file with the City of Wichita, Kansas. Drainage intent shall remain as depicted or as modified with the approval of the City Engineer of the City of Wichita, Kansas. No obstructions which impede the flow of this drainage plan shall be allowed.



- ⊕ = #4 REBAR W/ "BAUGHMAN" CAP (SET)
- ⊙ = #4 REBAR W/ "BAUGHMAN" CAP (FOUND)
- ⊗ = #4 REBAR W/ "TIE" CAP (FOUND)
- ⊠ = STONE (FOUND)
- ⊡ = 3/4" IRON IN THUMB (FOUND)

- (M) = MEASURED
- (P) = PLATTED
- (D) = DESCRIBED
- (C-P) = CALCULATED PER PLATTED INFO.
- (C-D) = CALCULATED PER DESCRIBED INFO.



18-04-03-01