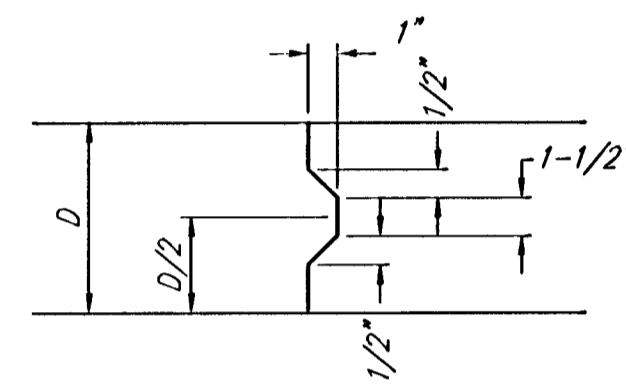
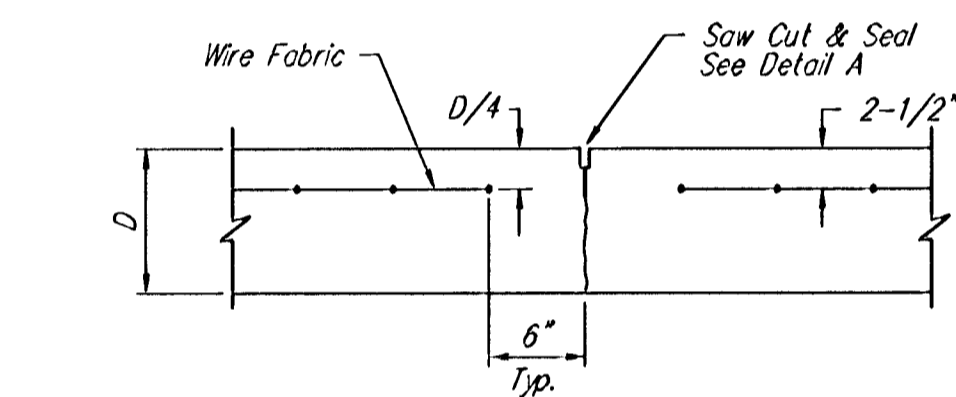


EXPANSION JOINT

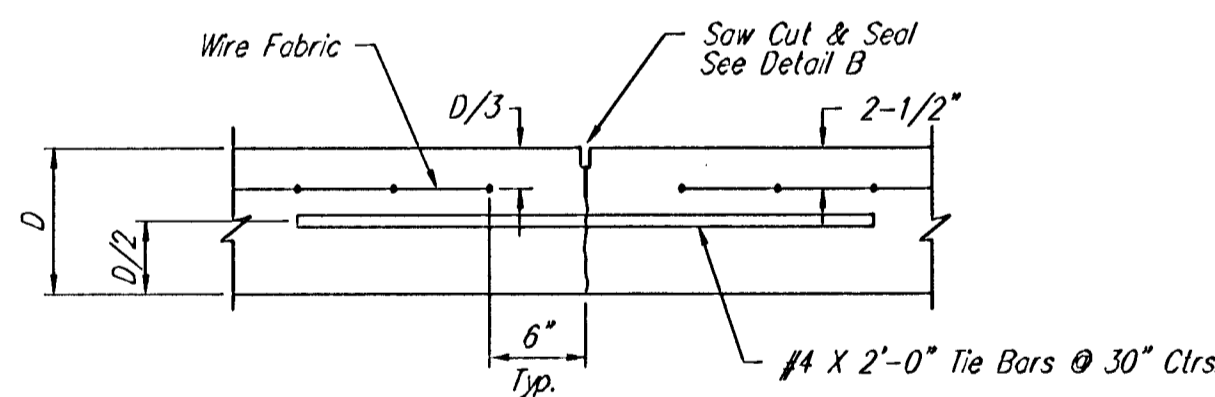
NOTE: Extra Thickness to be Subsidiary to Price of Square Yards Pavement



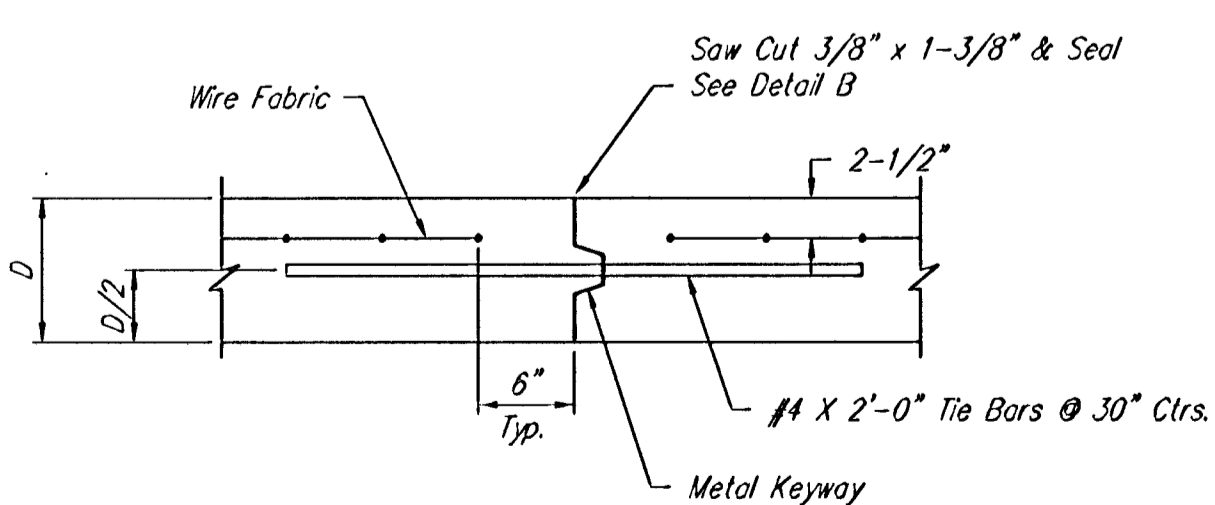
KEYWAY DETAIL



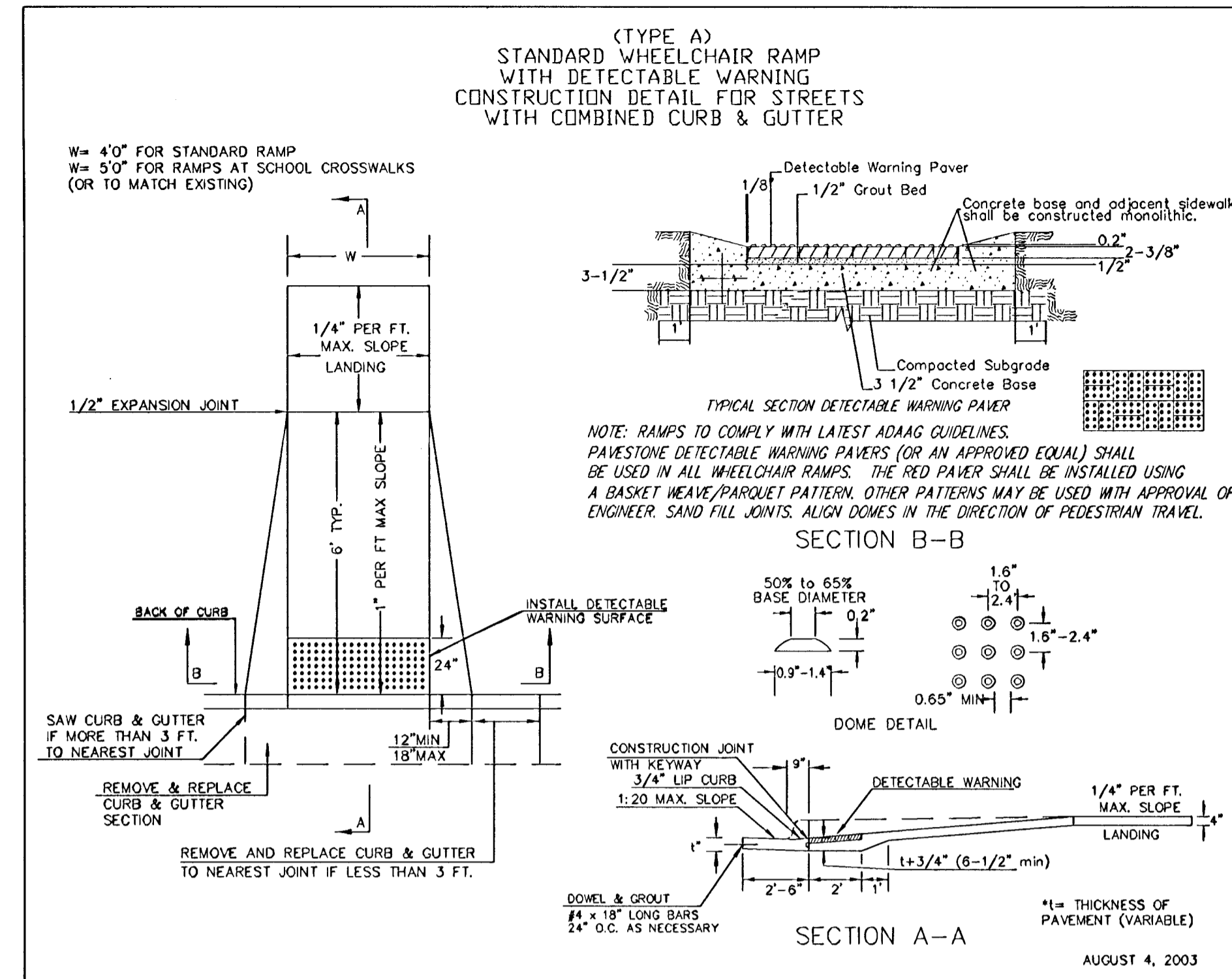
CONTRACTION JOINT DETAIL (C.J.)



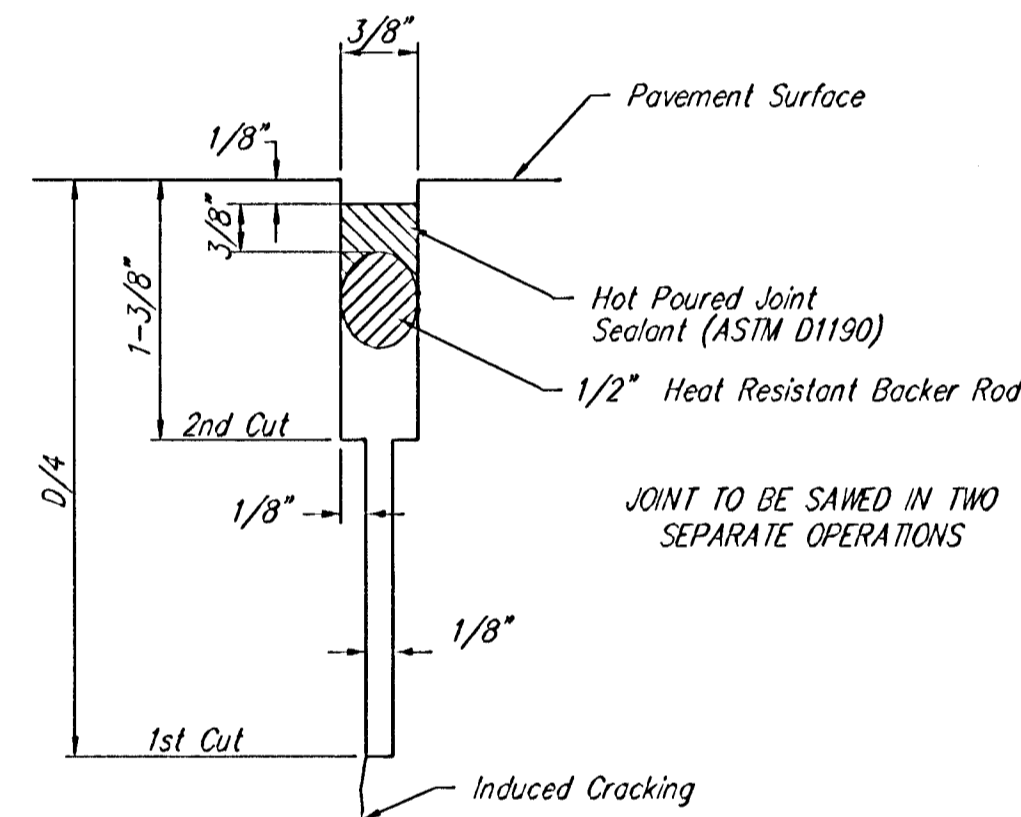
LONGITUDINAL JOINT DETAIL (L.J.)



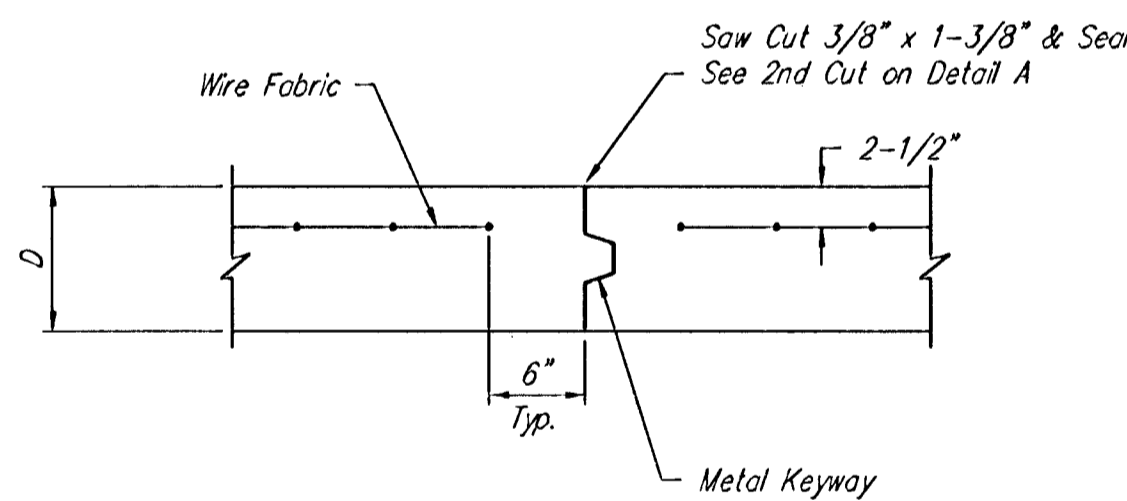
OPTIONAL LONGITUDINAL JOINT DETAIL (L.J.) (CONSTRUCTION JOINT)



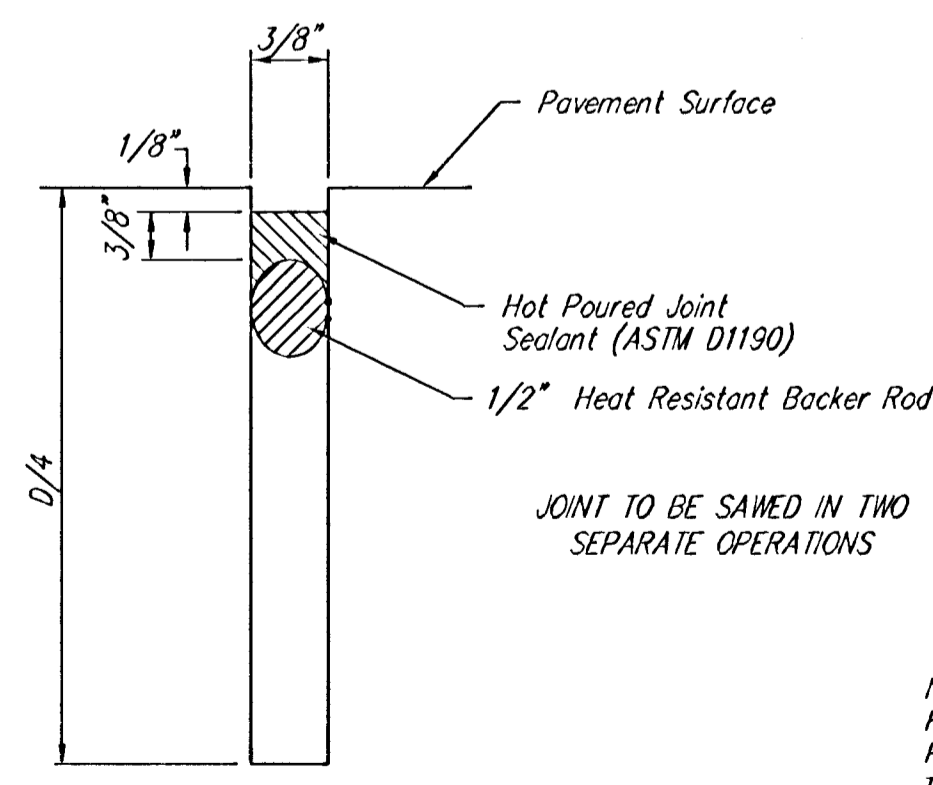
WHEELCHAIR RAMP DETAIL



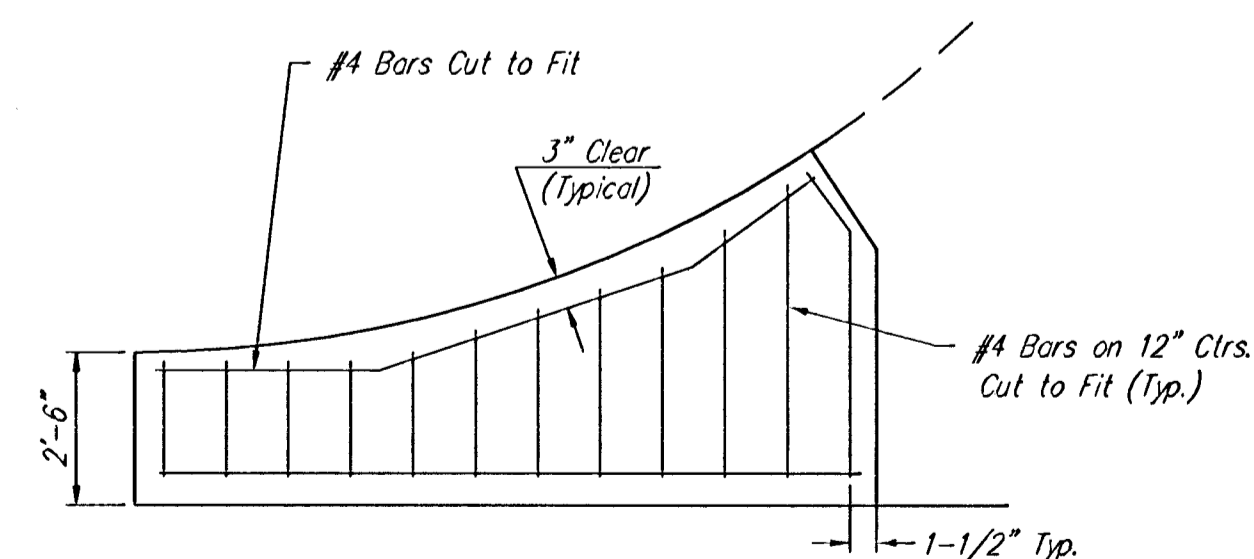
SAW JOINT DETAIL "A"



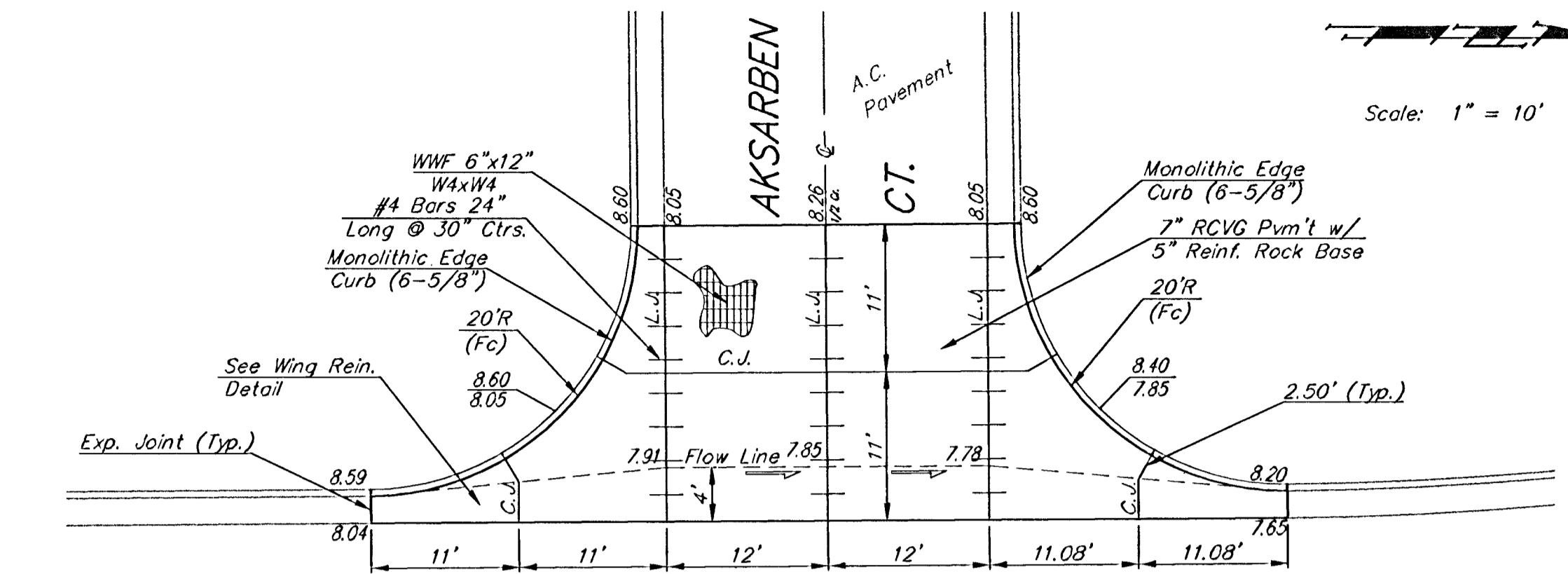
OPTIONAL CONTRACTION JOINT (CONSTRUCTION JOINT)



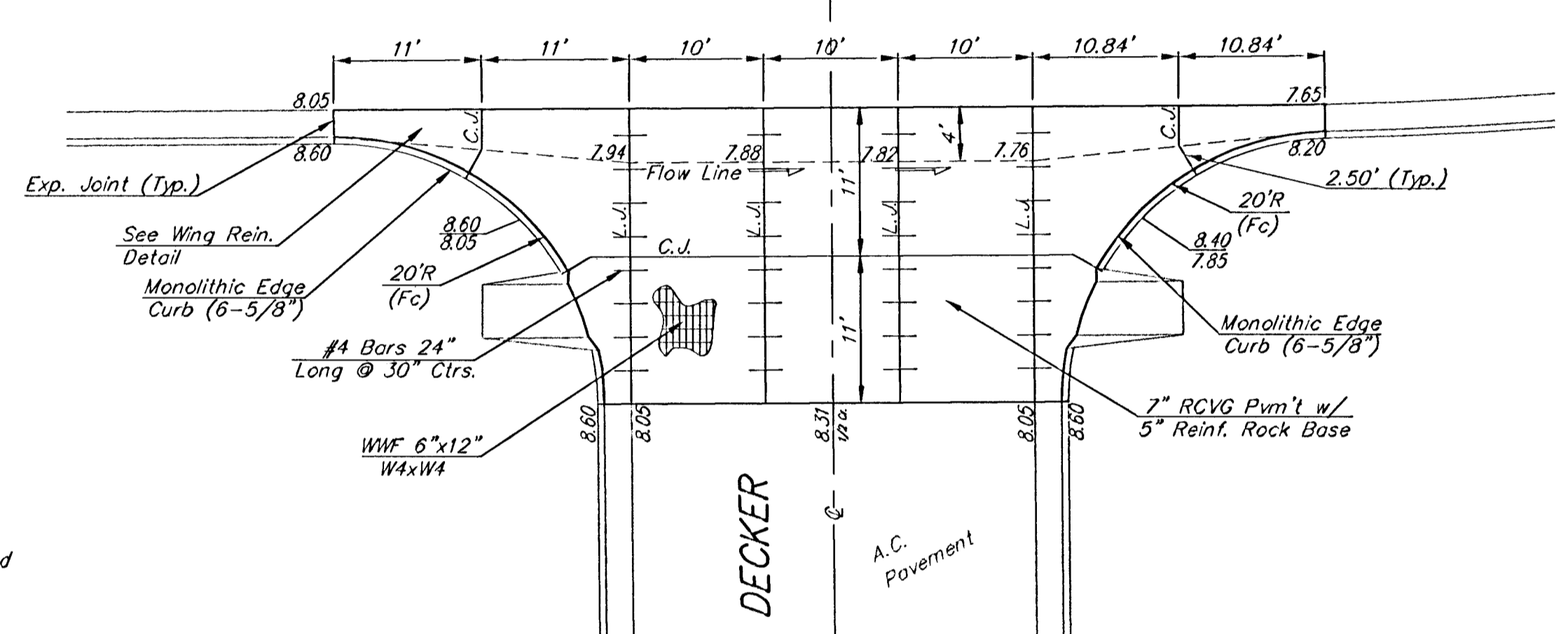
SAW JOINT DETAIL "B"



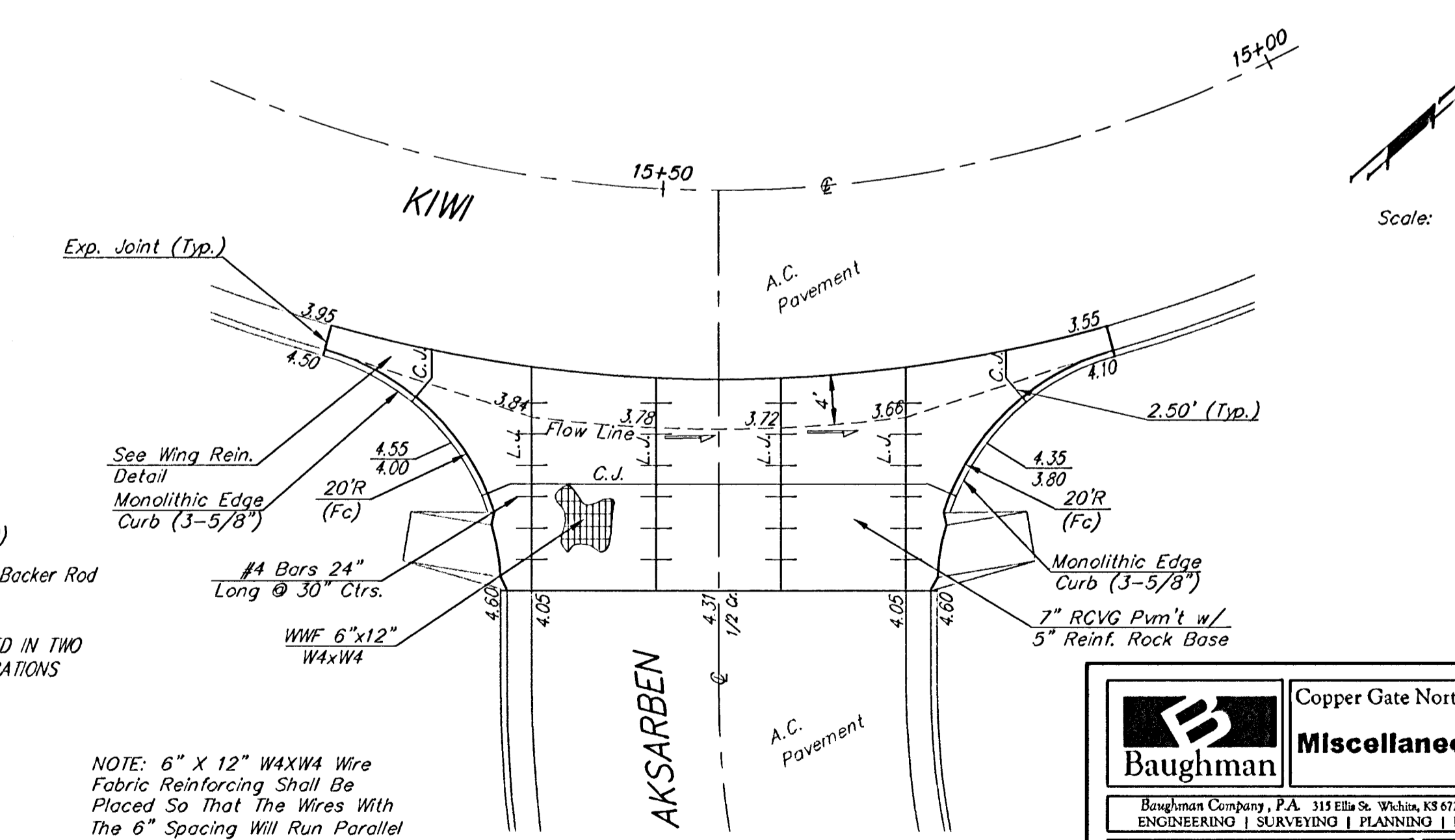
WING REINFORCING DETAIL



AKSARBEN



DECKER



KIWI

AKSARBEN

VALLEY GUTTER DETAILS

NOTE: 6" X 12" W4XW4 Wire Fabric Reinforcing Shall Be Placed So That The Wires With The 6" Spacing Will Run Parallel With The Longitudinal Joints.

Baughman		Copper Gate North Addition - Phase I	
Engineering & Surveying		Miscellaneous Details	
PROJECT NUMBER 47284104	DESIGN STAFF	DRAWN STAFF	
REVISIONS:	APPROVED	DATE	10/05/05
	SCALE	NONE	
	SHEET	5 OF 28	