

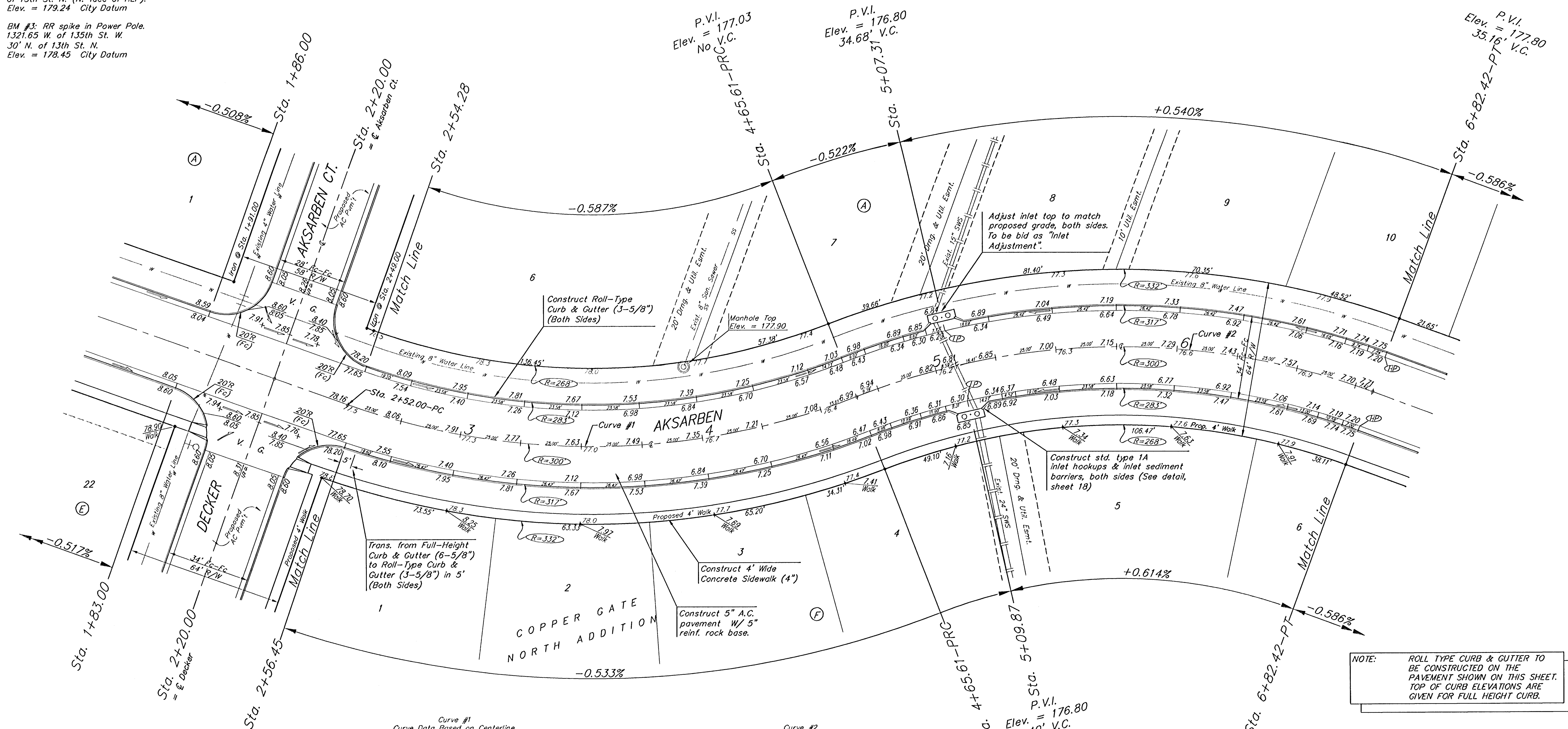
BENCHMARKS:

BM #1: C.O.W. disc at SW corner of intersection.
30.00'± S. of CL of 13th St. N.
35.00'± W. of CL of 135th St. W.
Elev. = 168.25 City Datum

BM #2: Small RR spike in 4th HLP
W. of 135th St. W. on south side of 13th St. N. (N. face of HLP).
Elev. = 179.24 City Datum

BM #3: RR spike in Power Pole.
1321.65 W. of 135th St. W.
30' N. of 13th St. N.
Elev. = 178.45 City Datum

Scale: 1" = 20'
• = Iron



NOTE: ROLL TYPE CURB & GUTTER TO BE CONSTRUCTED ON THE PAVEMENT SHOWN ON THIS SHEET. TOP OF CURB ELEVATIONS ARE GIVEN FOR FULL HEIGHT CURB.

Curve #1
Curve Data Based on Centerline
Rad. = 300' Delta = 40° 47' 51" Tangent = 111.56'
Arc = 213.61' L.C. = 209.13' Def/Ft. = 5.72972 Min.

Station	Arc	FACE CHORD LENGTHS		Defl.	T. Defl.
		8' Lt.	8' Rt.		
2+52.00	-	0'00"00"	0'00"00"	0'00"00"	0'00"00"
2+54.28	2.28'	2.09'	2.47'	0'13"04"	0'13"04"
2+56.45	2.17'	1.99'	2.35'	0'12"26"	0'25"30"
2+75.00	18.55'	17.00'	20.09'	1'46"17"	2'11"47"
3+00.00	25.00'	22.91'	27.08'	2'23"15"	4'35"02"
3+25.00	25.00'	22.91'	27.08'	2'23"14"	6'58"16"
3+50.00	25.00'	22.91'	27.08'	2'23"15"	9'21"31"
3+75.00	25.00'	22.91'	27.08'	2'23"14"	11'44"45"
4+00.00	25.00'	22.91'	27.08'	2'23"15"	14'08"00"
4+25.00	25.00'	22.91'	27.08'	2'23"14"	16'31"14"
4+50.00	25.00'	22.91'	27.08'	2'23"15"	18'54"29"
4+65.61	15.61'	14.31'	16.91'	1'29"27"	20'23"56"

Curve #2
Curve Data Based on Centerline
Rad. = 300' Delta = 41° 24' 29" Tangent = 113.38'
Arc = 216.81' L.C. = 212.12' Def/Ft. = 5.72963 Min.

Station	Arc	FACE CHORD LENGTHS		Defl.	T. Defl.
		8' Lt.	8' Rt.		
4+65.61	-	-	-	0'00"00"	0'00"00"
4+75.00	9.39'	10.17'	8.61'	0'53"48"	0'53"48"
5+00.00	25.00'	27.08'	22.91'	2'23"15"	3'17"03"
5+25.00	25.00'	27.08'	22.91'	2'23"14"	5'40"17"
5+50.00	25.00'	27.08'	22.91'	2'23"14"	8'03"31"
5+75.00	25.00'	27.08'	22.91'	2'23"15"	10'26"46"
6+00.00	25.00'	27.08'	22.91'	2'23"14"	12'50"00"
6+25.00	25.00'	27.08'	22.91'	2'23"15"	15'13"15"
6+50.00	25.00'	27.08'	22.91'	2'23"14"	17'36"29"
6+75.00	25.00'	27.08'	22.91'	2'23"15"	19'59"44"
6+82.42	7.42'	8.04'	6.80'	0'42"31"	20'42"15"

Copper Gate North Addition - Phase I

Baughman AKSARBEN
STA. 2+54.28 TO STA. 6+82.42

Baughman Company, P.A. 315 Ellis St. W. Raleigh, NC 27611 F3162637211 F316263149
ENGINEERING | SURVEYING | PLANNING | LANDSCAPE ARCHITECTURE

PROJECT NUMBER 47284104	DESIGN NBW	DRAWN TMS/JAK
REVISIONS:	APPROVED	DATE 10/05/05
SCALE Noted		SHEET 7 OF 28

Copper Gate North/Phase I/Str2 0502-E162