

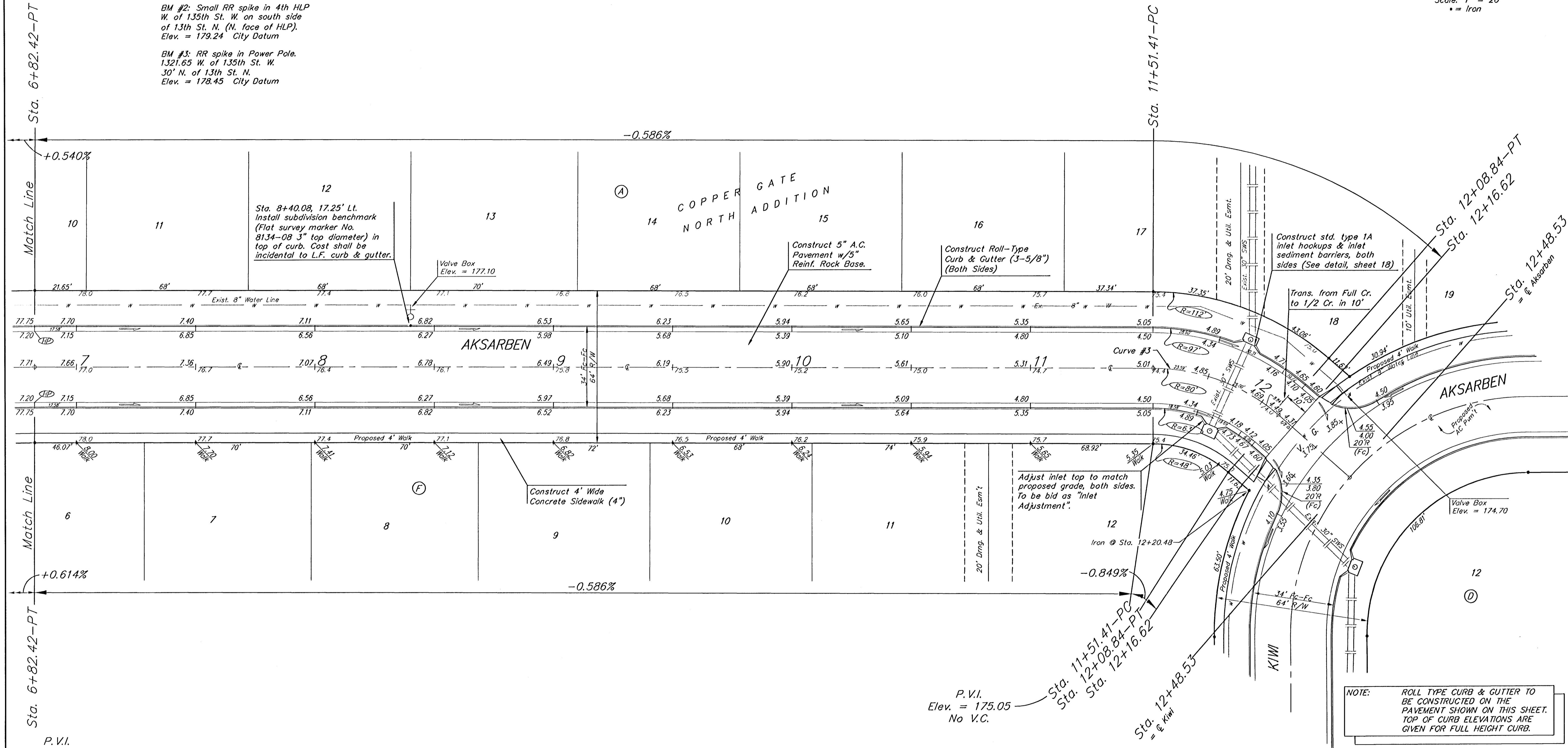
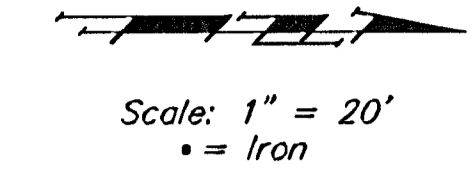
BENCHMARKS:

BM #1: C.O.W. disc at SW corner of intersection.
30.00'± S. of CL of 13th St. N.
35.00'± W. of CL of 135th St. W.
Elev. = 168.25 City Datum

BM #2: Small RR spike in 4th HLP W. of 135th St. W. on south side of 13th St. N. (N. face of HLP).
Elev. = 179.24 City Datum

BM #3: RR spike in Power Pole. 1321.65 W. of 135th St. W. 30' N. of 13th St. N.
Elev. = 178.45 City Datum

P.V.I.
Elev. = 177.80
35.16' V.C.



+0.614%

P.V.I.
Elev. = 177.80
35.16' V.C.

P.V.I.
Elev. = 175.05
No V.C.

NOTE: ROLL TYPE CURB & GUTTER TO BE CONSTRUCTED ON THE PAVEMENT SHOWN ON THIS SHEET. TOP OF CURB ELEVATIONS ARE GIVEN FOR FULL HEIGHT CURB.

Curve #3
Curve Data Based on Centerline

| Station | Arc | FACE CHORD LENGTHS | | Defl. | T. Defl. |
|----------|--------|--------------------|--------|----------|-----------|
| | | 8' Lt. | 8' Rt. | | |
| 11+51.41 | - | - | - | 0'00"00" | 0'00"00" |
| 11+75.00 | 23.59' | 30.85' | 16.16' | 8'26"53" | 8'26"53" |
| 12+00.00 | 25.00' | 32.68' | 17.12' | 8'57"11" | 17'24"04" |
| 12+08.84 | 8.84' | 11.60' | 6.07' | 3'09"57" | 20'34"01" |

Baughman Copper Gate North Addition - Phase I
AKSARBEN
Sta. 6+82.42 to Sta. 12+48.53

Baughman Company, P.A. 315 Ellis St. W. Lincoln, NE 68501 P: 316.662.7211 F: 316.762.0149
ENGINEERING | SURVEYING | PLANNING | LANDSCAPE ARCHITECTURE

| | | |
|----------------------------|---------------|-------------------------|
| PROJECT NUMBER 47284104 | DESIGN NBW | DRAWN TMS/JAK |
| REVISIONS: | APPROVED | DATE 10/05/05 |
| SCALE Noted | | SHEET 8 OF 28 |

Copper Gate North Phase I/Str 3 0502E162