

Maintain Existing Silt Fencing. Replace if missing or damaged.

1.35TH STREET WEST

Maintain existing sediment barrier.





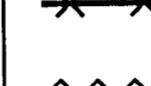

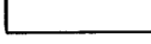
Maintain existing rip-rap.

Maintain existing sediment barriers.

NOTE: Contractor shall remove & replace existing erosion control measures as necessary for construction. Contractor shall be required to maintain all on-site erosion control items until final acceptance by the City of Wichita.

Maintain one existing construction entrance onto existing paved roadway per detail, sheet 20.

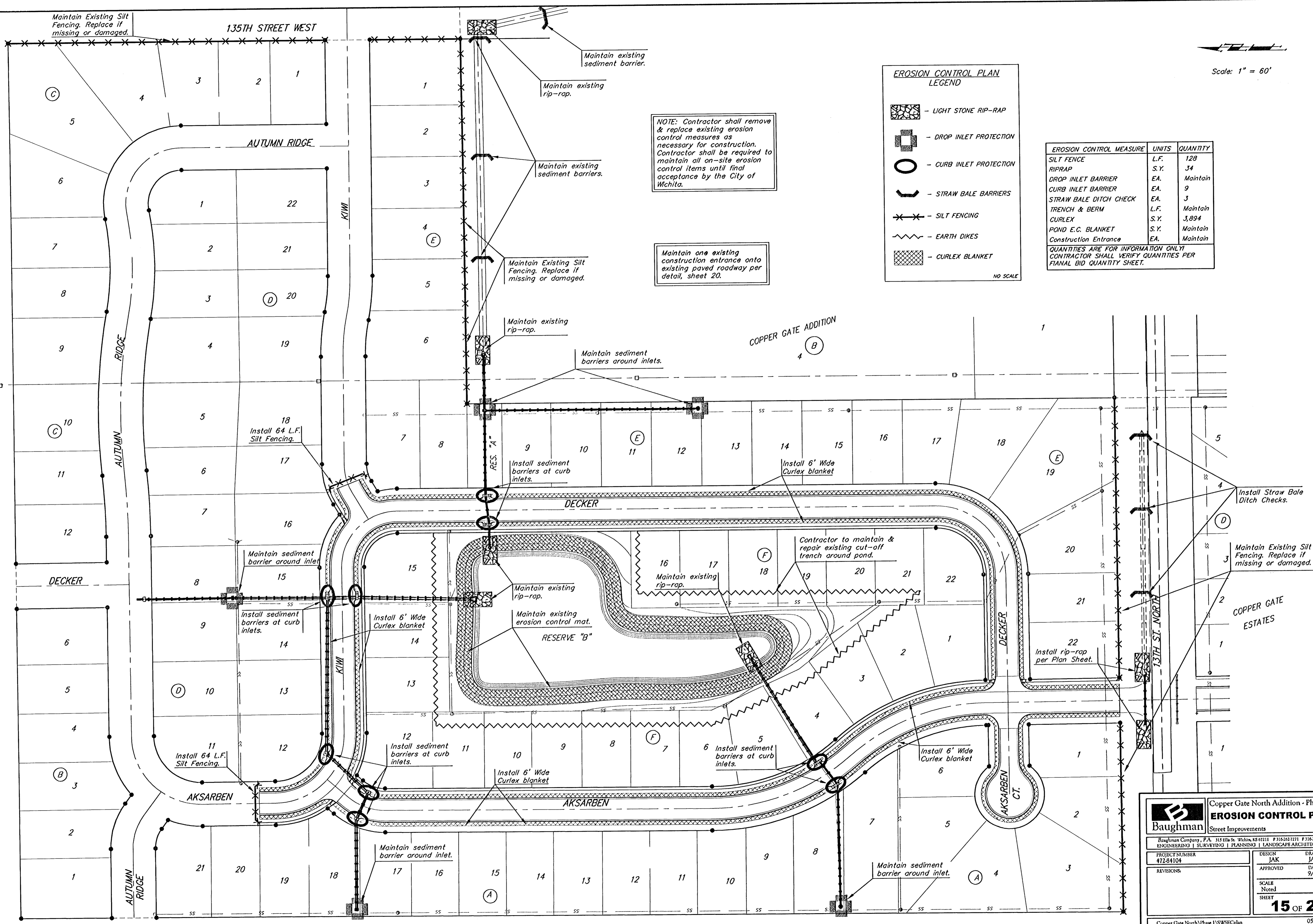
EROSION CONTROL PLAN LEGEND

-  - LIGHT STONE RIP-RAP
-  - DROP INLET PROTECTION
-  - CURB INLET PROTECTION
-  - STRAW BALE BARRIERS
-  - SILT FENCING
-  - EARTH DIKES
-  - CURLEX BLANKET

EROSION CONTROL MEASURE	UNITS	QUANTITY
SILT FENCE	L.F.	128
RIPRAP	S.Y.	34
DROP INLET BARRIER	EA.	Maintain
CURB INLET BARRIER	EA.	9
STRAW BALE DITCH CHECK	EA.	3
TRENCH & BERM	L.F.	Maintain
CURLEX	S.Y.	3,894
POND E.C. BLANKET	S.Y.	Maintain
Construction Entrance	EA.	Maintain

QUANTITIES ARE FOR INFORMATION ONLY. CONTRACTOR SHALL VERIFY QUANTITIES PER FINAL BID QUANTITY SHEET.

Scale: 1" = 60'



Baughman Engineering & Surveying | Planning | Landscape Architecture

Copper Gate North Addition - Phase I
EROSION CONTROL PLAN
 Street Improvements

PROJECT NUMBER: 472-84104
 DESIGN: JAK
 DRAWN: JAK
 APPROVED: [Signature]
 DATE: 9/05

REVISIONS:

SCALE: Noted
 SHEET: 15 OF 28

Copper Gate North/Phase I/SWSECplan 0502E163