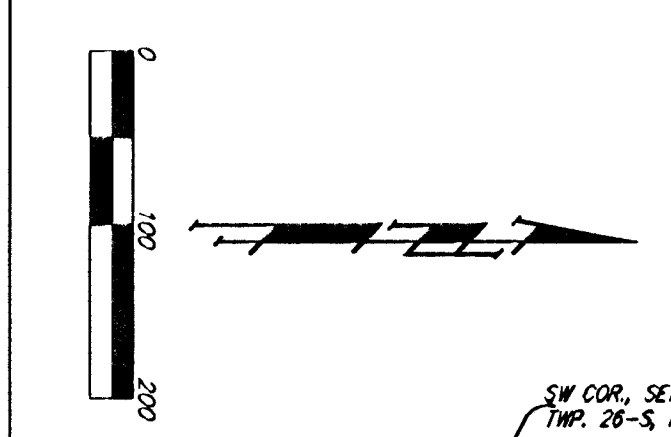
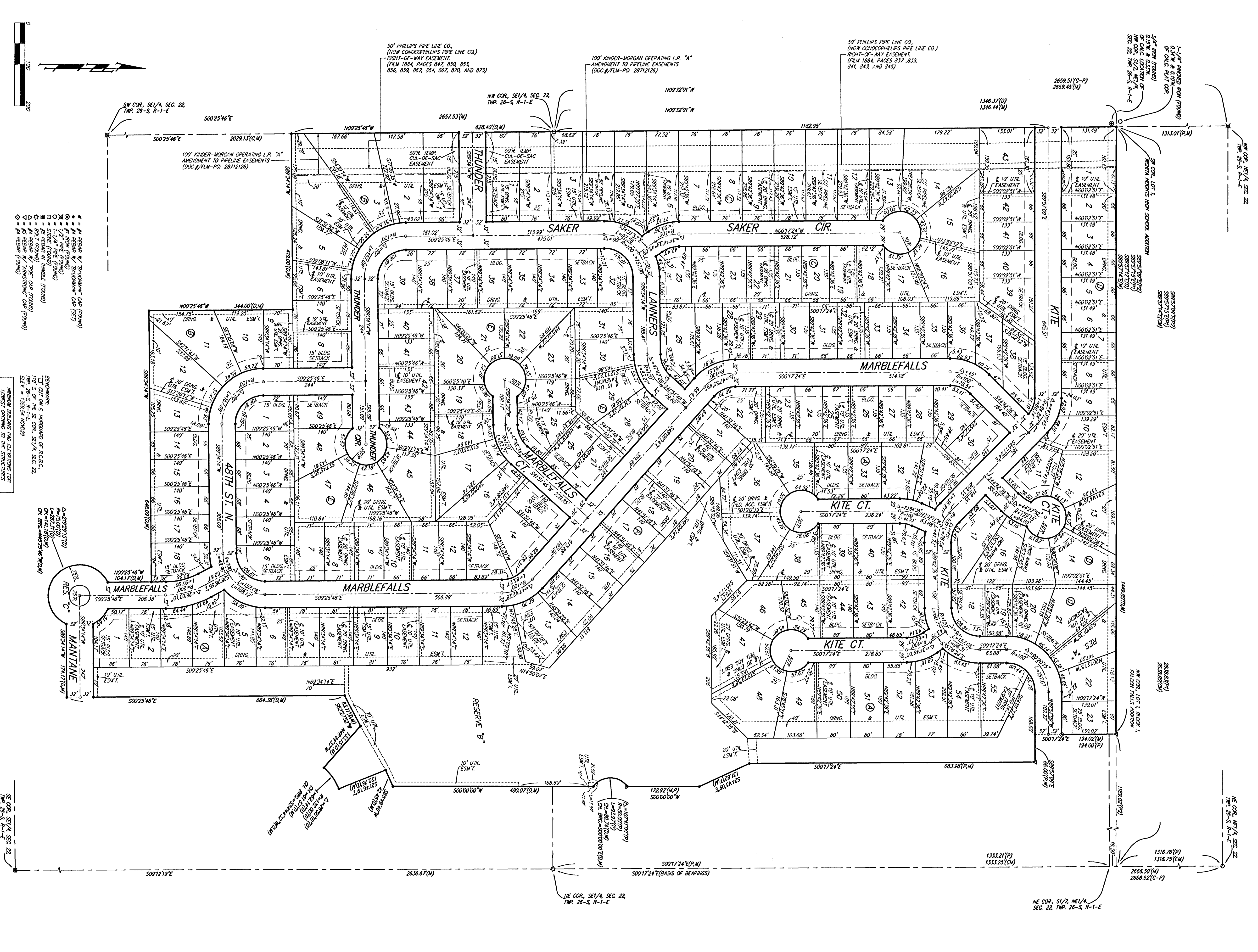


FALCON FALLS 2ND ADDITION

WICHITA, SEDGWICK COUNTY, KANSAS



NOTE:
 ALL LOTS WITH FALCON FALLS 2ND ADDITION
 SMALL LOTS ARE 3 FOOT MINIMUM SETBACK

NOTE: The platting data for this addition has been developed by the subdivision engineer and is on file with the City of Wichita, Kansas. All dimensions, bearings, and distances are given in feet and inches. All bearings are given in degrees, minutes and seconds. No other dimensions or bearings are shown on this plat.

- (M) = MEASURED
- (C) = CALCULATED
- (P) = PLATTED
- (R) = CALCULATED PER RECORDS AND
- (S) = PLATTED AND PER FALCON FALLS ADDITION
- (A) = AREA
- (L) = LENGTH
- (W) = WIDTH
- (H) = HEIGHT
- (D) = DISTANCE
- (B) = BEARING
- (A) = AREA
- (L) = LENGTH
- (W) = WIDTH
- (H) = HEIGHT
- (D) = DISTANCE
- (B) = BEARING

LOT	BLDG	ELEVATION
1-9	A	1254.0
10-12	A	1254.0
13-18	A	1254.0
19-21	A	1254.0
22-24	A	1257.0
25-27	A	1257.0