

Lat. 6, Main 13, SS #23  
**SANITARY SEWER IMPROVEMENTS**  
 to serve  
**FALCON FALLS 2ND ADDITION**

**CITY OF WICHITA, KANSAS**

James L. Armour, P.E. City Engineer

Project Number

**468-84065**

O.C.A. Number

**744147**

**GENERAL NOTES:**

1. Contractor will be required to provide notice to utility companies a minimum of twenty-four (24) hours prior to any excavation, as follows:

Kansas One-Call 687-2470

The Contractor must notify the following in case of an emergency:

Cox Communications 262-4270  
 Kansas Gas Service 1-888-482-4950  
 Westar Energy 383-8650  
 Aquila Energy 1-888-482-4950  
 Southwestern Bell 268-2245  
 City of Wichita Water Dept. 268-4563  
 City of Wichita Sewer Maint. 268-4024  
 City of Wichita Storm Sewer Maint. 268-4090  
 City of Wichita Traffic Maint. 268-4034  
 Conoco Pipeline Co. 1-800-231-2551  
 Williams Pipeline Co. 529-6600  
 Phillips Pipeline Co. 1-800-766-8230

2. Underground utility service lines and overhead utility pole lines are to be adjusted as necessary by others prior to construction unless the plans specifically call for their adjustment by the Contractor or unless the plans specifically identify a utility to be adjusted by its owner during construction. Existing utilities and their location, as shown on the plans, represent the best information obtainable for design. The Contractor will be required to work around existing utilities within the right-of-way which do not conflict with proposed construction.

3. Trees and shrubs in public right-of-way which are in direct conflict with proposed new construction shall be removed by the Contractor with the Engineer's approval. Trees and shrubs which are not in direct conflict with proposed new construction shall be saved and protected from damage.

4. The Contractor shall give all property owners and/or tenants of developed property abutting the construction of this project a minimum of ten (10) days advance notice prior to start of construction.

5. The Contractor shall be responsible for preserving property irons. The Contractor will be required to re-establish any property irons which are damaged or destroyed by his construction operations. Such irons shall be reestablished by a licensed land surveyor in accordance with state laws.

6. When connecting to existing manhole or stub, the contractor shall reshape manhole bottom or adjust the existing stub's alignment or elevation as necessary. Cost shall be subsidiary to project.

7. The Contractor shall be responsible for maintaining continuous flow of sewage through construction. Contractor's proposed method for maintaining sewage flow shall be approved by the Engineer. Cost of maintaining flow of sewage through construction will not be paid for directly and this cost shall be considered as subsidiary to the other pay items of work.

8. The developer for this project is Jay Russell, and can be reached at (316) 722-2417

9. The Contractor shall grade around exposed manholes at a 1:1 slope. Manholes set lower than existing grade shall have 9" berm constructed around manhole to prevent infiltration into sanitary sewer system. Cost of dirt, labor, equipment, etc. to be incidental to cost of manhole. Easements shall be graded with the storm water drain improvement project as part of the mass grading plan.

10. All existing and proposed erosion control measures including silt fencing, erosion control mat, straw bales, inlet barriers, and const. entrance shall be maintained throughout construction by the contractor and until project is accepted by the City of Wichita. The on-site engineer shall complete weekly reports on the status of erosion control measures. The contractor shall be required to comply with maintenance and/or replacement of erosion control measures as determined by the on-site engineer until project is accepted by City of Wichita. Cost to be included in "Site Clearing and Restoration."

11. All areas disturbed during construction shall be seeded at 300 lbs./acre with Rya Grass immediately following construction in that area. Contractor shall prepare ground per City Specifications.

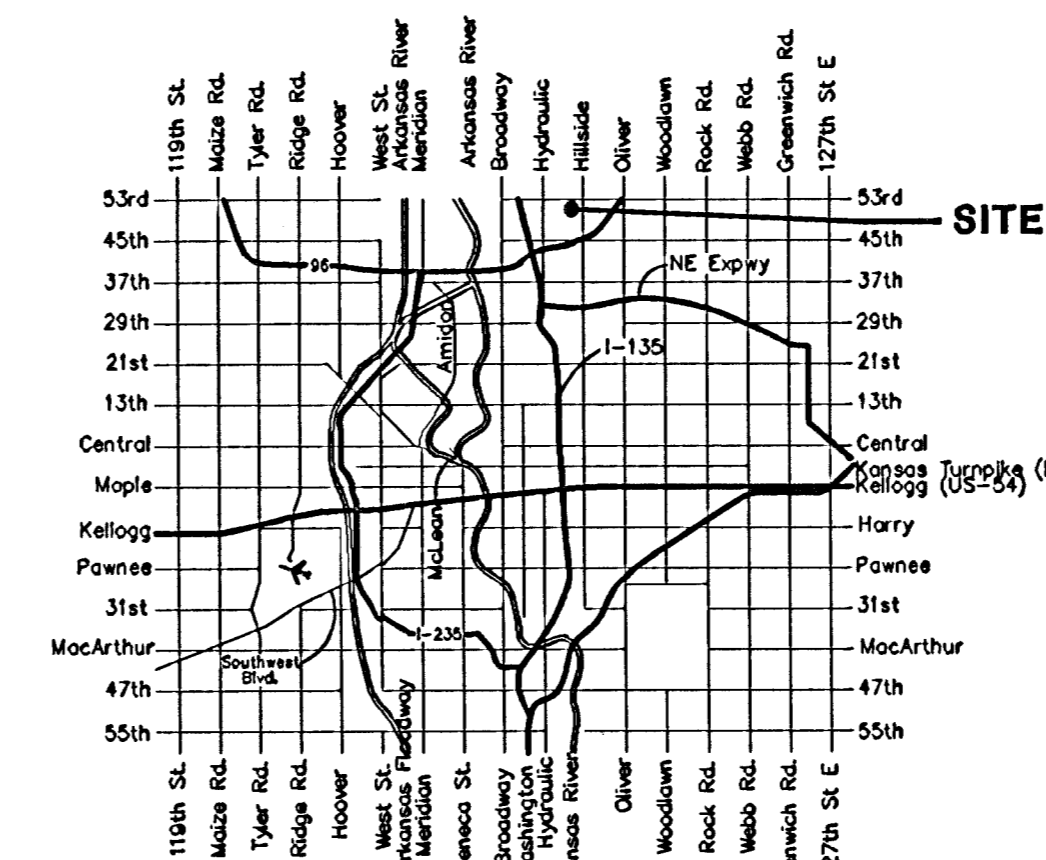
**BENCHMARKS**

BM #1: Brass Plate on North Hub Guard of R.C.B.C. 50' East of NW Corner NE 1/2, Sec. 22, Twp. 26-S, R-1-E.  
 Elev. = 1371.83 (NGVD29)

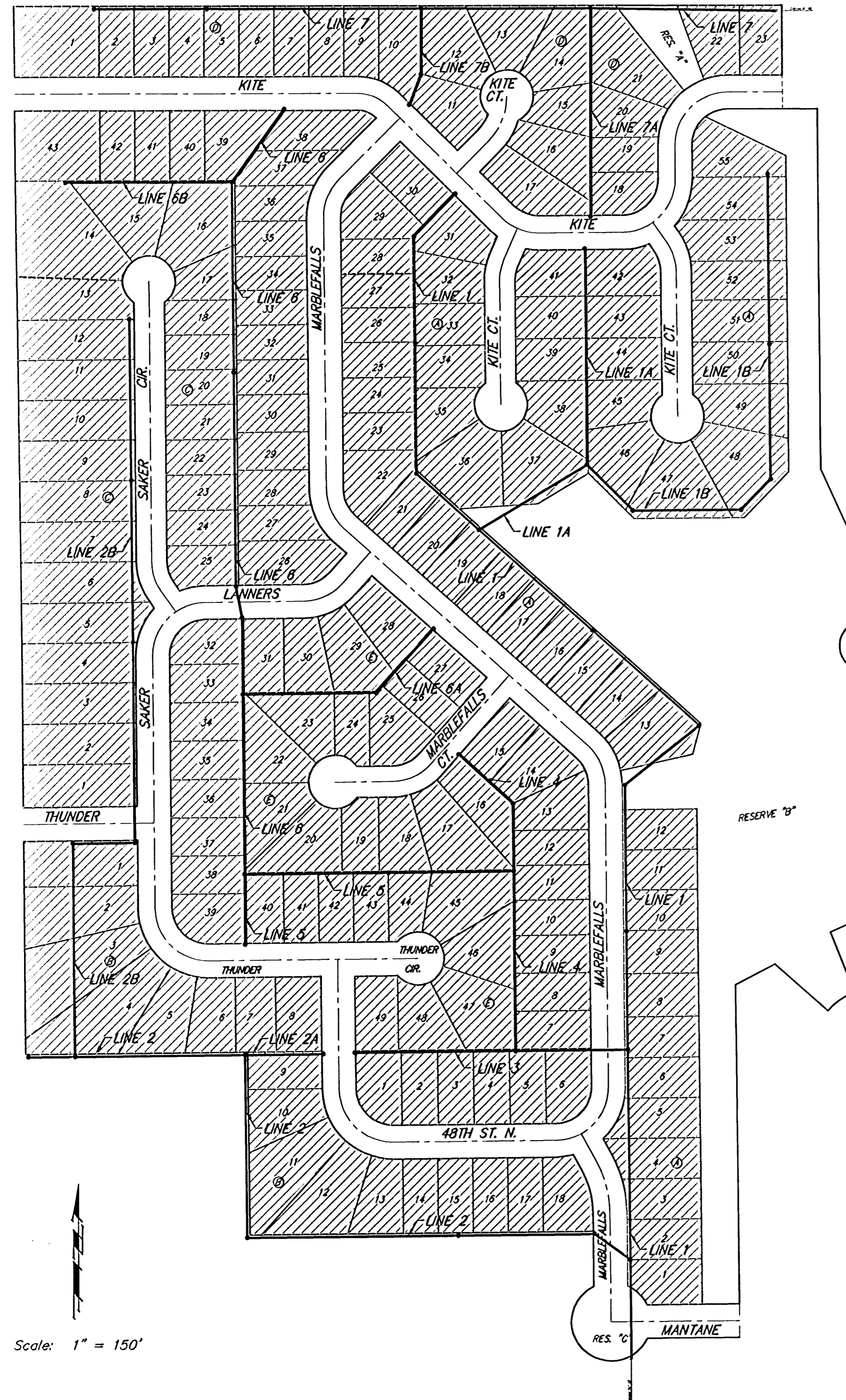
BM #2: "□" cut on East Hub Guard of R.C.B.C., 110' S. of the SE Cor., SE 1/4, Sec. 22, Twp. 26-S, R-1-E.  
 Elev. = 1359.54 (NGVD29)

**SHEET INDEX**

Title Sheet	1
Line 1	2-4
Line 1A	5
Line 1B	6-7
Line 2	8-9
Line 2A	10
Line 2B	11-12
Line 3	13
Line 4	14
Line 5	15
Line 6	16-17
Line 6A	18
Line 6B	19
Line 7	20-21
Line 7A	22
Line 7B	22
Standard Manhole Detail	23
Shallow Manhole Detail	24
Ring & Cover Detail	25
Erosion Control Plan	26
Erosion Control BMP's	27-30
Staking Plan	31
Copy of Plat	32

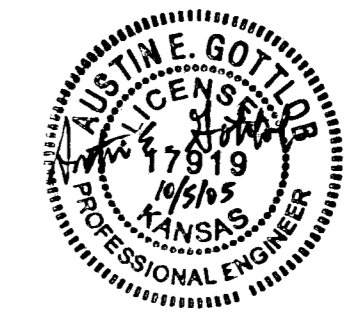
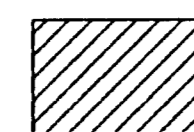


**Vicinity Map**



Scale: 1" = 150'

**Benefit District**



Baughman Company, P.A. 315 Ella St. Wichita, KS 67211 P 316-262-7271 F 316-262-0147  
 ENGINEERING | SURVEYING | PLANNING | LANDSCAPE ARCHITECTURE

Utility Contractors, Inc.-Contractor  
 Jaso, Oetken, Burdick, City-Inspectors  
 Released 6/11/06  
 As-Built  
 Risers & Stubs  
 .pdf by JDL 7/17/06