

BENCHMARKS

BM #1: Brass Plate on North Hub Guard of R.C.B.C. 50' East of NW Corner NE 1/4, Sec. 22, Twp. 26-S, R-1-E. Elev. = 1371.83 (NGVD29)

BM #2: " " cut on East Hub Guard of R.C.B.C. 110' S. of the SE Cor., SE 1/4, Sec. 22, Twp. 26-S, R-1-E. Elev. = 1359.54 (NGVD29)

SEWER SERVICE TABLE

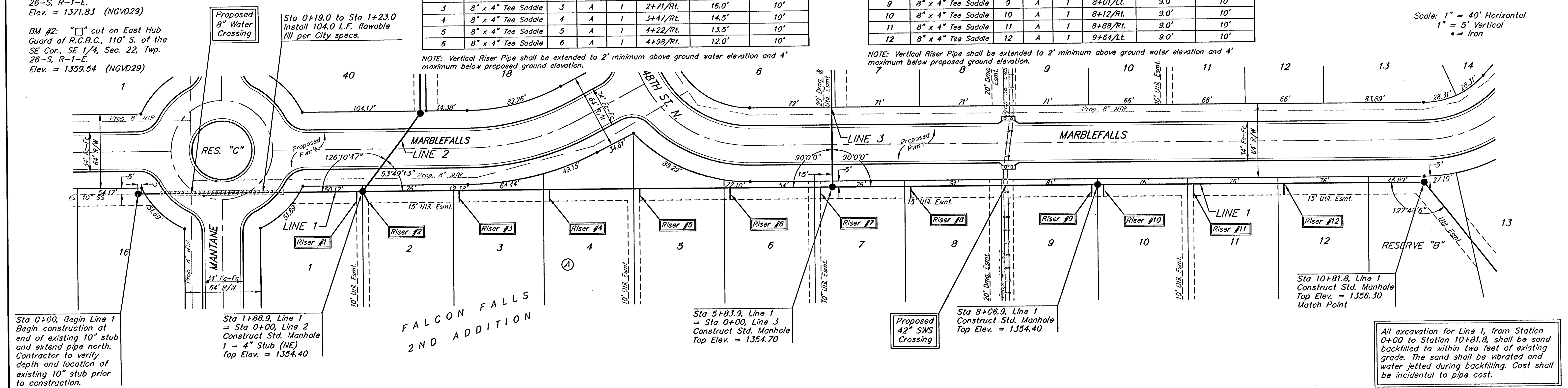
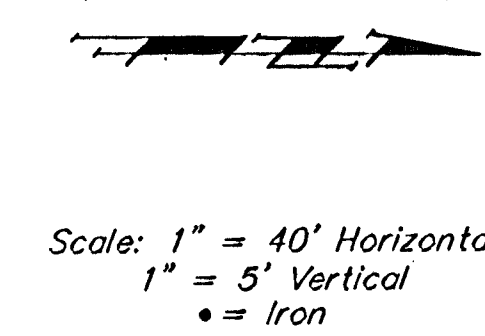
NUMBER	TYPE	LOCATION				FOR INFORMATION ONLY	
		LOT NO.	BLOCK NO.	LINE NO.	STATION\ DIRECTION	APPROXIMATE LENGTH 4" PIPE VERTICAL	HORIZONTAL
1	10" x 4" Tee Saddle	1	A	1	1+83/Rt.	16.5'	10'
2	4" Riser w/ Stub	2	A	1	1+88.9/Rt.	16.5'	10'
3	8" x 4" Tee Saddle	3	A	1	2+71/Rt.	16.0'	10'
4	8" x 4" Tee Saddle	4	A	1	3+47/Rt.	14.5'	10'
5	8" x 4" Tee Saddle	5	A	1	4+22/Rt.	13.5'	10'
6	8" x 4" Tee Saddle	6	A	1	4+98/Rt.	12.0'	10'

NOTE: Vertical Riser Pipe shall be extended to 2' minimum above ground water elevation and 4' maximum below proposed ground elevation.

SEWER SERVICE TABLE

NUMBER	TYPE	LOCATION				FOR INFORMATION ONLY	
		LOT NO.	BLOCK NO.	LINE NO.	STATION\ DIRECTION	APPROXIMATE LENGTH 4" PIPE VERTICAL	HORIZONTAL
7	8" x 4" Tee Saddle	7	A	1	5+74/Rt.	10.0'	10'
8	8" x 4" Tee Saddle	8	A	1	6+50/Rt.	9.0'	10'
9	8" x 4" Tee Saddle	9	A	1	8+01/Lt.	9.0'	10'
10	8" x 4" Tee Saddle	10	A	1	8+12/Rt.	9.0'	10'
11	8" x 4" Tee Saddle	11	A	1	8+88/Rt.	9.0'	10'
12	8" x 4" Tee Saddle	12	A	1	9+64/Lt.	9.0'	10'

NOTE: Vertical Riser Pipe shall be extended to 2' minimum above ground water elevation and 4' maximum below proposed ground elevation.



Sta 0+00, Begin Line 1
Begin construction at end of existing 10" stub and extend pipe north. Contractor to verify depth and location of existing 10" stub prior to construction.

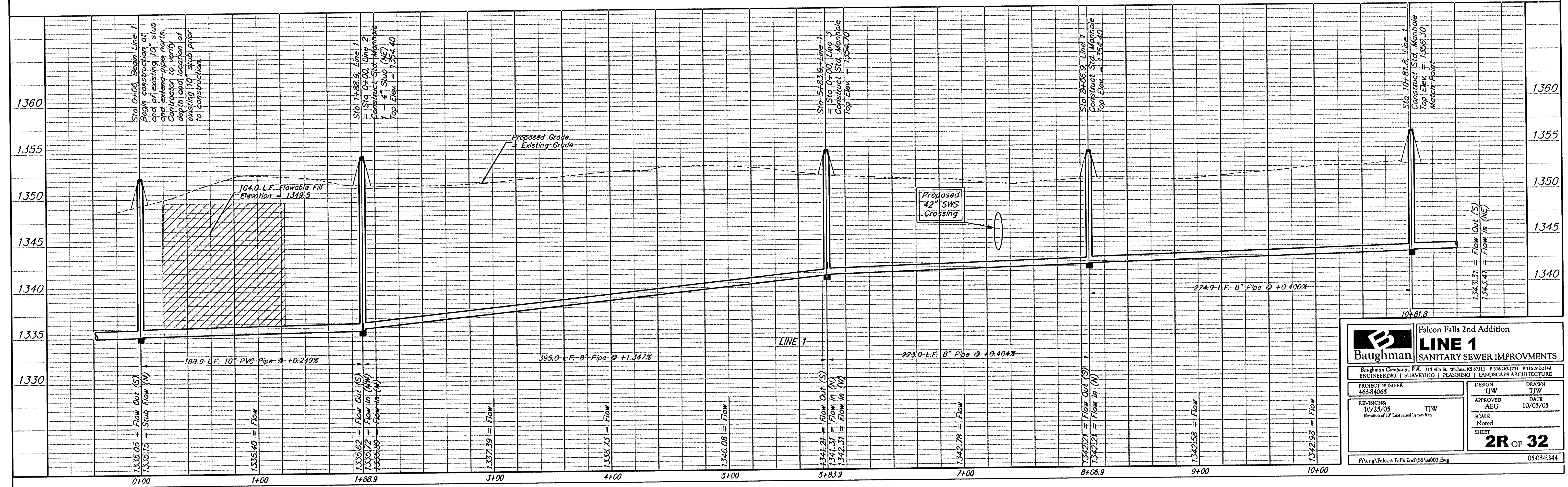
Sta 1+88.9, Line 1 = Sta 0+00, Line 2
Construct Std. Manhole 1 - 4" Stub (NE)
Top Elev. = 1354.40

Sta 5+83.9, Line 1 = Sta 0+00, Line 3
Construct Std. Manhole
Top Elev. = 1354.70

Sta 8+06.9, Line 1
Construct Std. Manhole
Top Elev. = 1354.40

Sta 10+81.8, Line 1
Construct Std. Manhole
Top Elev. = 1356.30
Match Point

All excavation for Line 1, from Station 0+00 to Station 10+81.8, shall be sand backfilled to within two feet of existing grade. The sand shall be vibrated and water jetted during backfilling. Cost shall be incidental to pipe cost.



Baughman Falcon Falls 2nd Addition
LINE 1
SANITARY SEWER IMPROVEMENTS

PROJECT NUMBER: 468-84065
DESIGN: TJW
DRAWN: TJW
APPROVED: AEG
DATE: 10/05/05

REVISIONS: 10/25/05
SCALE: Noted
SHEET: 2R OF 32

F:\eng\Falcon Falls 2nd SS\ss003.dwg 05.08.E344