

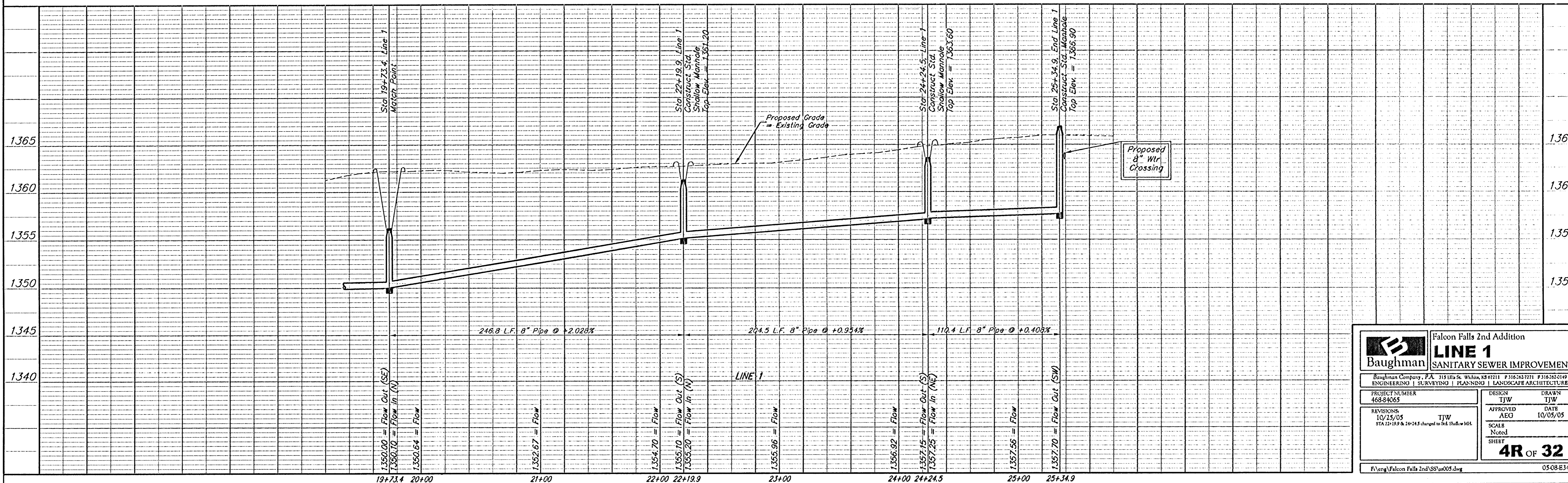
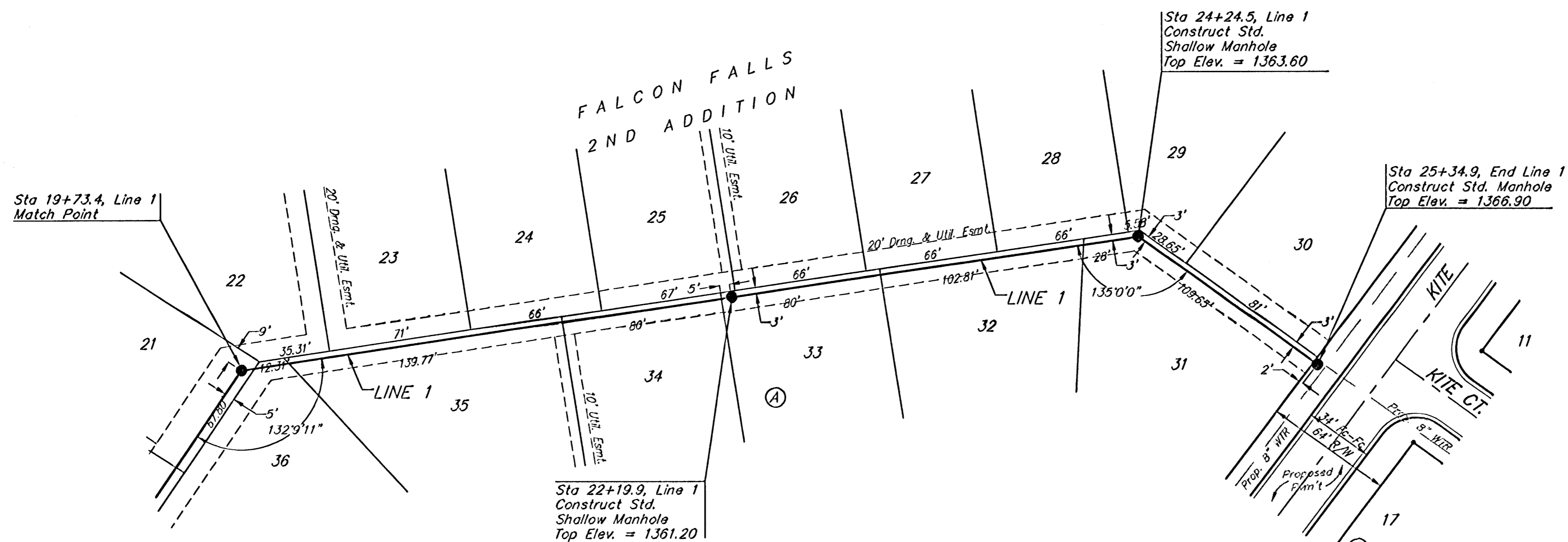
BENCHMARKS

BM #1: Brass Plate on North Hub Guard of R.C.B.C. 50' East of NW Corner NE 1/2, Sec. 22, Twp. 26-S, R-1-E.
Elev. = 1371.83 (NGVD29)

BM #2: "x" cut on East Hub Guard of R.C.B.C., 110' S. of the SE Cor., SE 1/4, Sec. 22, Twp. 26-S, R-1-E.
Elev. = 1359.54 (NGVD29)



Scale: 1" = 40' Horizontal
1" = 5' Vertical
• = Iron



	Falcon Falls 2nd Addition LINE 1 SANITARY SEWER IMPROVEMENTS	
	<small>Baughman Company, P.A. 312 Ellis St. Wichita, KS 67211 P 316.263.7271 F 316.262.0149 ENGINEERING SURVEYING PLANNING LANDSCAPE ARCHITECTURE</small>	
PROJECT NUMBER 468-84065	DESIGN TJW	DRAWN TJW
REVISIONS 10/25/05 STA 22+19.9 & 24+24.5 changed to Std. Shallow Manhole	APPROVED AEO	DATE 10/05/05
SCALE Noted	SHEET 4R OF 32	
<small>F:\eng\Falcon Falls 2nd\SS\ss05.dwg</small>		<small>0508B344</small>