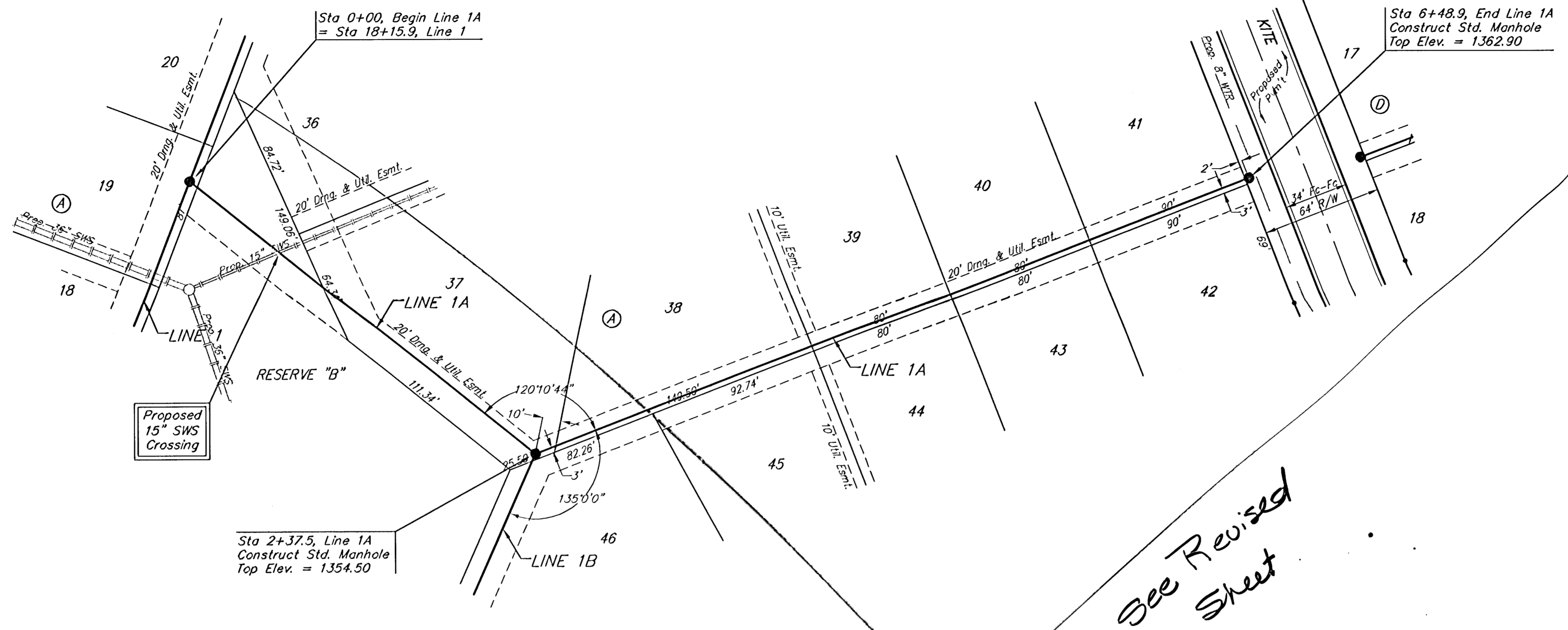


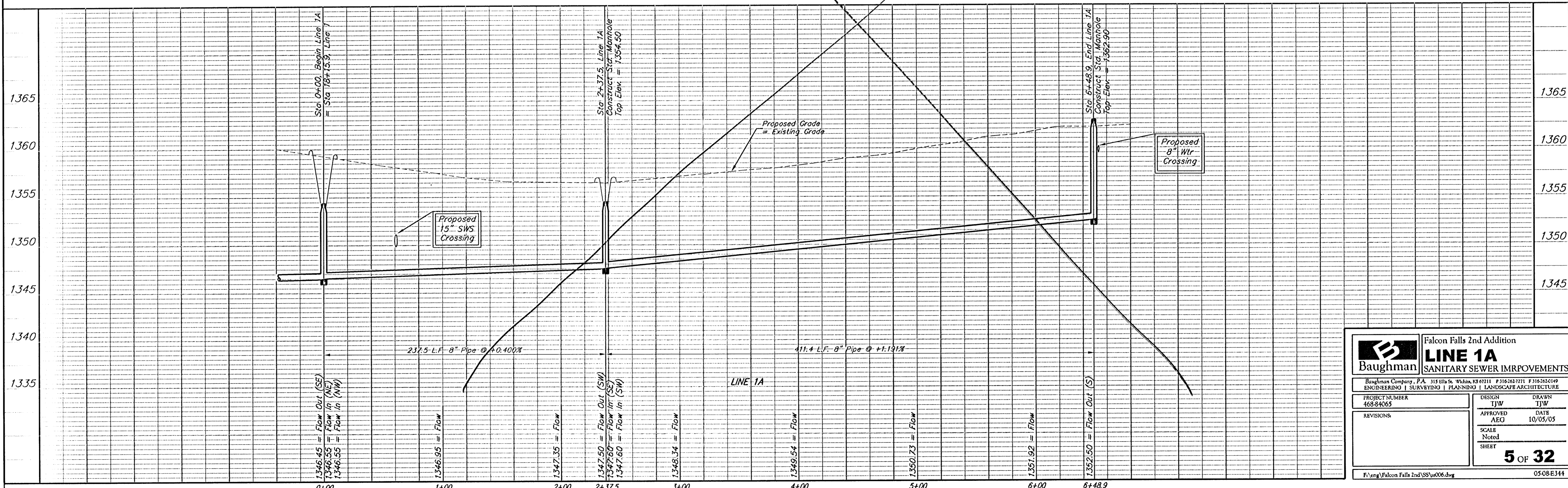
BENCHMARKS

BM #1: Brass Plate on North Hub Guard of R.C.B.C. 50' East of NW Corner NE 1/2, Sec. 22, Twp. 26-S, R-1-E.
Elev. = 1371.83 (NGVD29)

BM #2: "□" cut on East Hub Guard of R.C.B.C. 110' S. of the SE Cor., SE 1/4, Sec. 22, Twp. 26-S, R-1-E.
Elev. = 1359.54 (NGVD29)



See Revised Sheet



		Falcon Falls 2nd Addition LINE 1A SANITARY SEWER IMPROVEMENTS	
Baughman Company, P.A. 315 Ella St. Wilkes, PA 17111 P 316-263-7211 F 316-262-0149 ENGINEERING SURVEYING PLANNING LANDSCAPE ARCHITECTURE			
PROJECT NUMBER 468-84065	DESIGN TJW	DRAWN TJW	DATE 10/05/05
REVISIONS:	APPROVED AEG	SCALE Noted	SHEET 5 OF 32
F:\eng\Falcon Falls 2nd\SS\ss006.dwg			05-08-E344