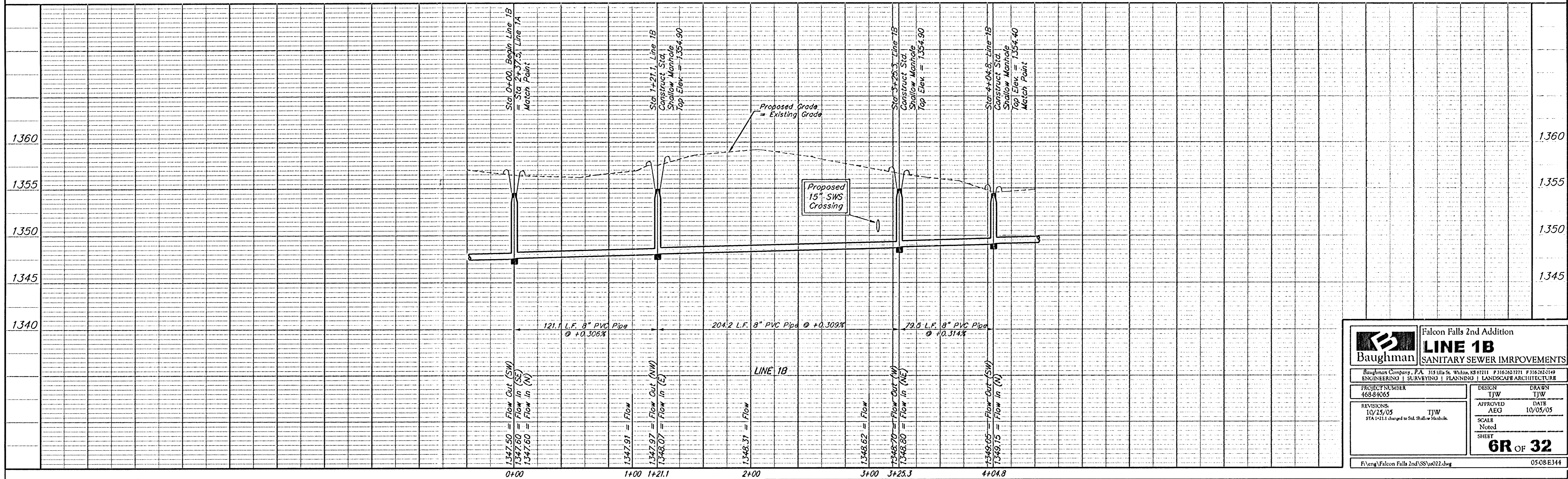
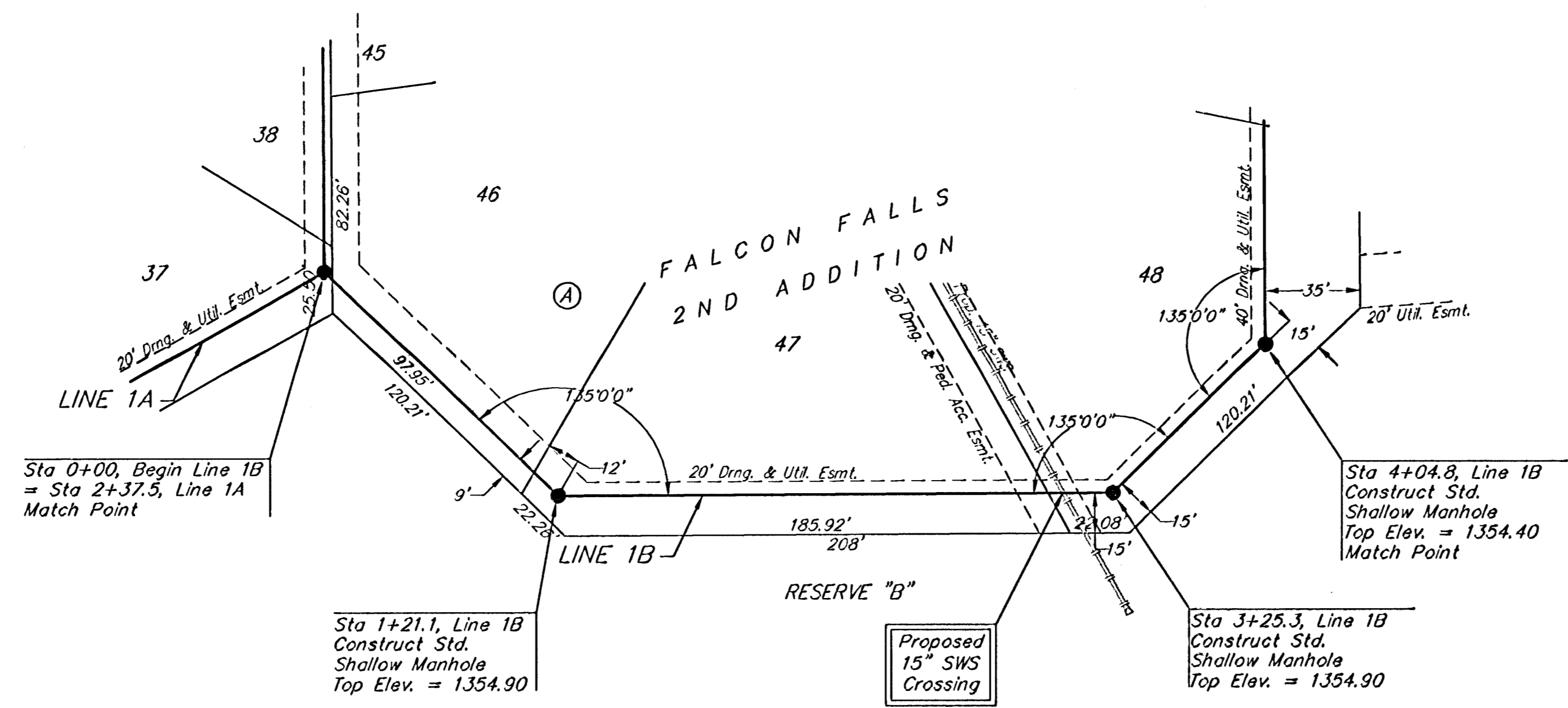
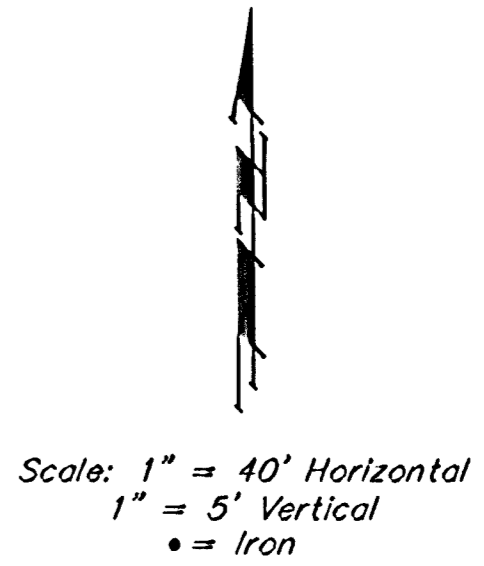


BENCHMARKS

BM #1: Brass Plate on North Hub Guard of R.C.B.C. 50' East of NW Corner NE 1/2, Sec. 22, Twp. 26-S, R-1-E.
Elev. = 1371.83 (NGVD29)

BM #2: " " cut on East Hub Guard of R.C.B.C., 110' S. of the SE Cor., SE 1/4, Sec. 22, Twp. 26-S, R-1-E.
Elev. = 1359.54 (NGVD29)



Baughman		Falcon Falls 2nd Addition	
LINE 1B		SANITARY SEWER IMPROVEMENTS	
Baughman Company, P.A. 315 Ellis St. Wichita, KS 67211 P 316-262-2149 ENGINEERING SURVEYING PLANNING LANDSCAPE ARCHITECTURE			
PROJECT NUMBER 468-34065	DESIGN TJW	DATE 10/05/05	DRAWN TJW
REVISIONS 10/25/05 TJW STA 1+21.1 changed to Std. Shallow Manhole.	APPROVED AEG	DATE 10/05/05	SCALE Noted
6R OF 32			SHEET
F:\eng\Falcon Falls 2nd SSW\022.dwg			05/08/144