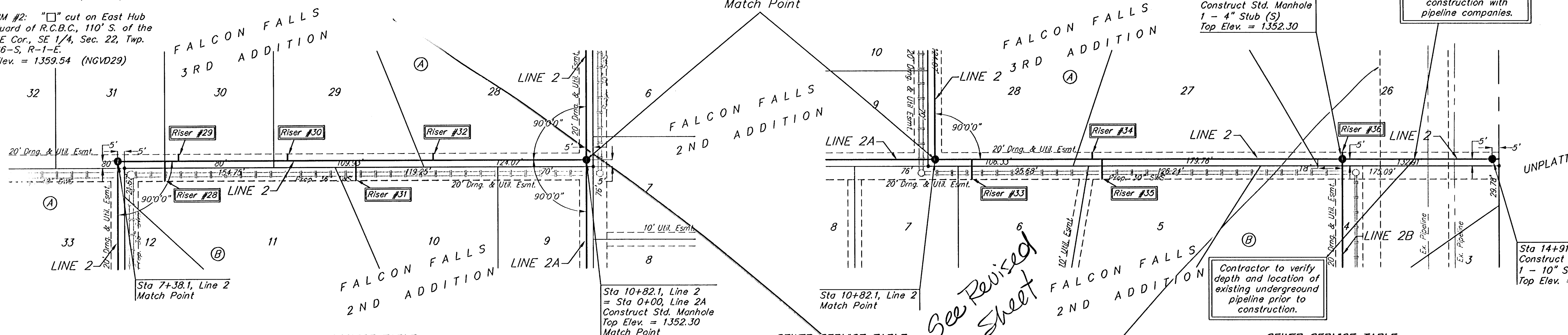


BENCHMARKS

BM #1: Brass Plate on North Hub Guard of R.C.B.C. 50' East of NW Corner NE 1/2, Sec. 22, Twp. 26-S, R-1-E.
Elev. = 1371.83 (NGVD29)

BM #2: "□" cut on East Hub Guard of R.C.B.C., 110' S. of the SE Cor., SE 1/4, Sec. 22, Twp. 26-S, R-1-E.
Elev. = 1359.54 (NGVD29)



Scale: 1" = 40' Horizontal
1" = 5' Vertical
• = Iron

SEWER SERVICE TABLE

NUMBER	TYPE	LOCATION				FOR INFORMATION ONLY	
		LOT NO.	BLOCK NO.	LINE NO.	STATION \ DIRECTION	APPROXIMATE LENGTH 4" PIPE	VERTICAL
28	10" x 4" Tee Saddle	11	B	2	7+73/Rt.	10.5'	15'
29	10" x 4" Tee Saddle	30	A	2	7+83/Lt.	10.5'	5'
30	10" x 4" Tee Saddle	29	A	2	8+63/Lt.	11.0'	5'

NOTE: Vertical Riser Pipe shall be extended to 2' minimum above ground water elevation and 4' maximum below proposed ground elevation.

SEWER SERVICE TABLE

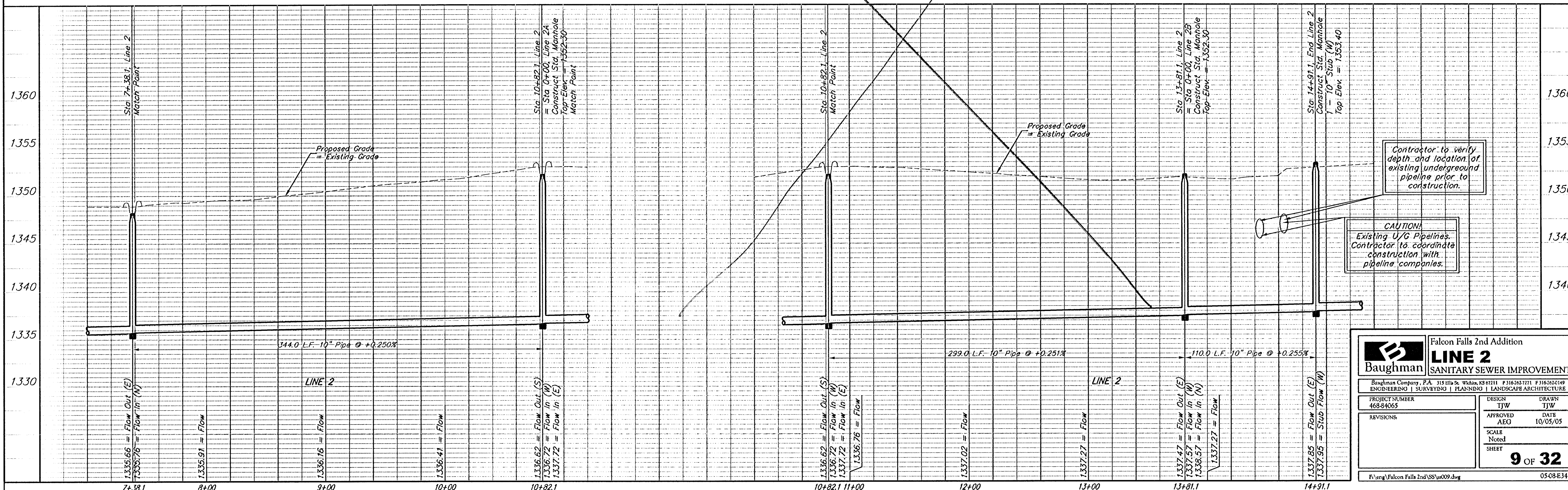
NUMBER	TYPE	LOCATION				FOR INFORMATION ONLY	
		LOT NO.	BLOCK NO.	LINE NO.	STATION \ DIRECTION	APPROXIMATE LENGTH 4" PIPE	VERTICAL
31	10" x 4" Tee Saddle	10	B	2	9+13/Rt.	11.5'	15'
32	10" x 4" Tee Saddle	28	A	2	9+70/Lt.	12.5'	5'
33	10" x 4" Tee Saddle	6	B	2	11+09/Rt.	13.0'	15'

NOTE: Vertical Riser Pipe shall be extended to 2' minimum above ground water elevation and 4' maximum below proposed ground elevation.

SEWER SERVICE TABLE

NUMBER	TYPE	LOCATION				FOR INFORMATION ONLY	
		LOT NO.	BLOCK NO.	LINE NO.	STATION \ DIRECTION	APPROXIMATE LENGTH 4" PIPE	VERTICAL
34	10" x 4" Tee Saddle	27	A	2	11+97/Lt.	12.5'	5'
35	10" x 4" Tee Saddle	5	B	2	12+05/Rt.	12.5'	15'
36	10" x 4" Tee Saddle	26	A	2	13+81/Lt.	13.0'	5'

NOTE: Vertical Riser Pipe shall be extended to 2' minimum above ground water elevation and 4' maximum below proposed ground elevation.



Contractor to verify depth and location of existing underground pipeline prior to construction.

CAUTION! Existing U/G Pipelines. Contractor to coordinate construction with pipeline companies.

Baughman Falcon Falls 2nd Addition
LINE 2 SANITARY SEWER IMPROVEMENTS

Baughman Company, P.A. 315 Ellis St. Wichita, KS 67211 P3162427271 F3162626149
ENGINEERING | SURVEYING | PLANNING | LANDSCAPE ARCHITECTURE

PROJECT NUMBER 468-84065	DESIGN TJW	DRAWN TJW
REVISIONS:	APPROVED AEG	DATE 10/05/05
SCALE Noted		SHEET 9 OF 32

F:\eng\Falcon Falls 2nd SSS\09.dwg 05/08/EJH