

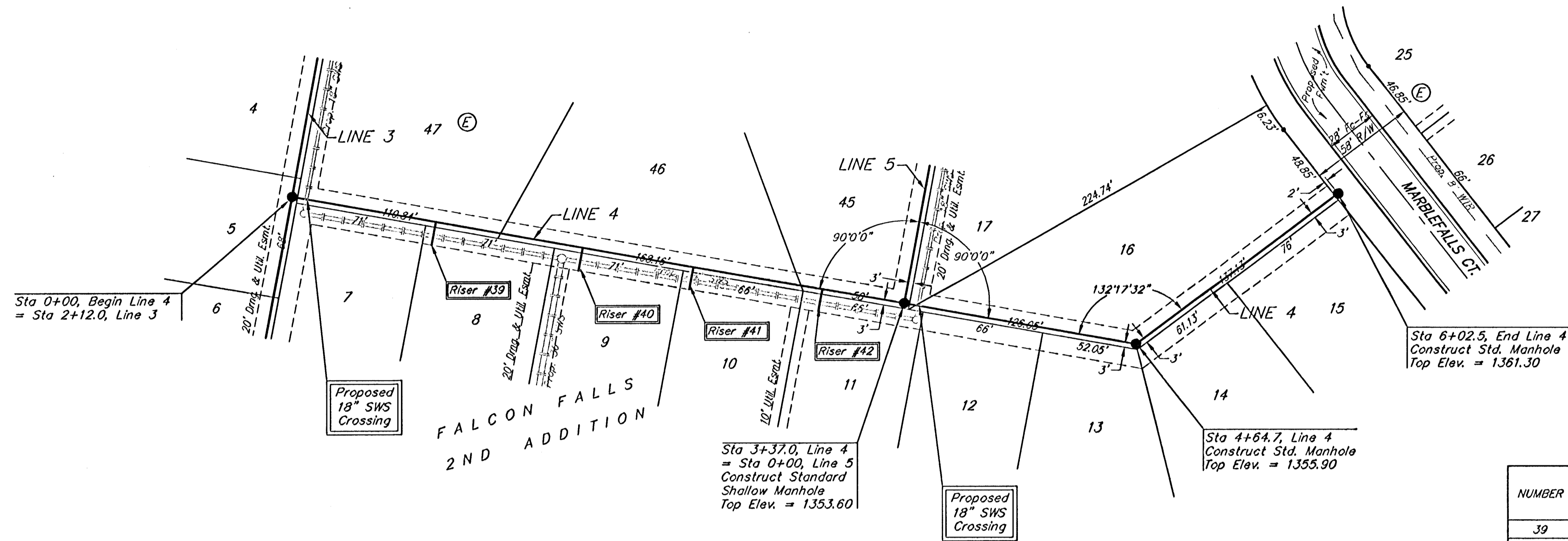
BENCHMARKS

BM #1: Brass Plate on North Hub Guard of R.C.B.C. 50' East of NW Corner NE 1/2, Sec. 22, Twp. 26-S, R-1-E.
Elev. = 1371.83 (NGVD29)

BM #2: "X" cut on East Hub Guard of R.C.B.C., 110' S. of the SE Cor., SE 1/4, Sec. 22, Twp. 26-S, R-1-E.
Elev. = 1359.54 (NGVD29)



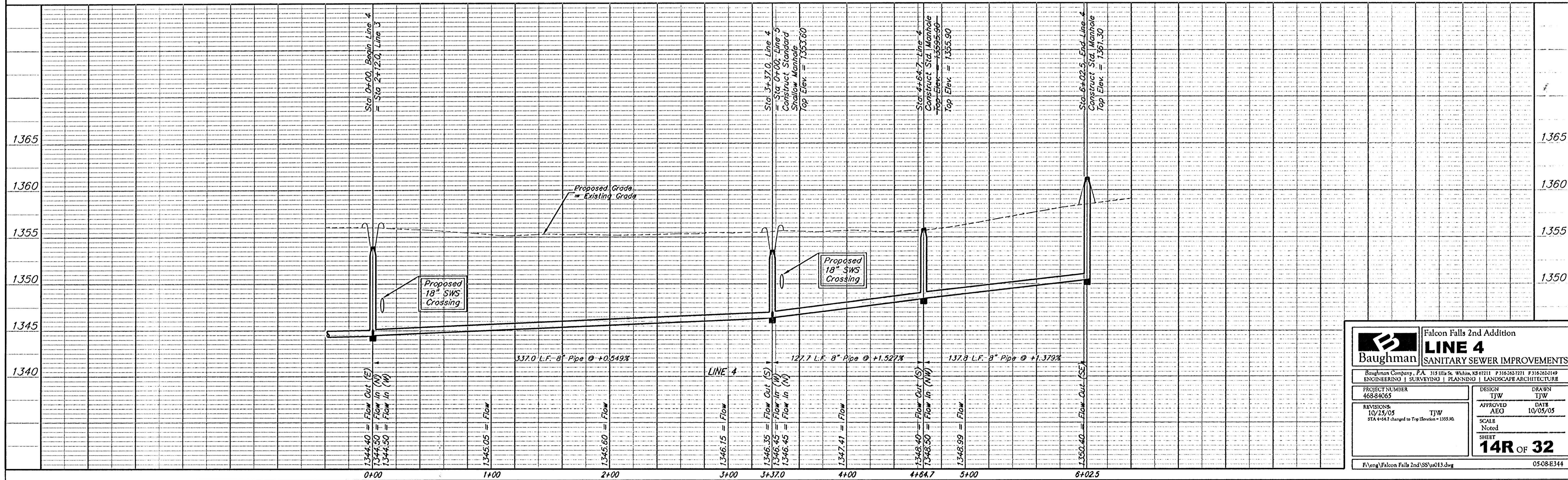
Scale: 1" = 40' Horizontal
1" = 5' Vertical
• = Iron



SEWER SERVICE TABLE

NUMBER	TYPE	LOCATION				FOR INFORMATION ONLY	
		LOT NO.	BLOCK NO.	LINE NO.	STATION DIRECTION	APPROXIMATE LENGTH 4" PIPE VERTICAL	HORIZONTAL
39	10" x 4" Tee Saddle	8	E	4	0+79/Rt.	5.0'	13'
40	10" x 4" Tee Saddle	9	E	4	1+60/Rt.	5.0'	13'
41	10" x 4" Tee Saddle	10	E	4	2+21/Rt.	5.0'	13'
42	10" x 4" Tee Saddle	11	E	4	2+92/Rt.	5.0'	13'

NOTE: Vertical Riser Pipe shall be extended to 2' minimum above ground water elevation and 4' maximum below proposed ground elevation.



Baughman Falcon Falls 2nd Addition
LINE 4
SANITARY SEWER IMPROVEMENTS

315 E. 11th St., Wichita, KS 67211 P 316-263-7271 F 316-262-0149
ENGINEERING | SURVEYING | PLANNING | LANDSCAPE ARCHITECTURE

PROJECT NUMBER 468-84065	DESIGN TJW	DRAWN TJW
REVISIONS 10/25/05 STA 4+64.7 changed to Top Elevation = 1355.90	APPROVED AEO	DATE 10/05/05
SCALE Noted		SHEET 14R OF 32

F:\eng\Falcon Falls 2nd\SS\ss013.dwg 0508E344