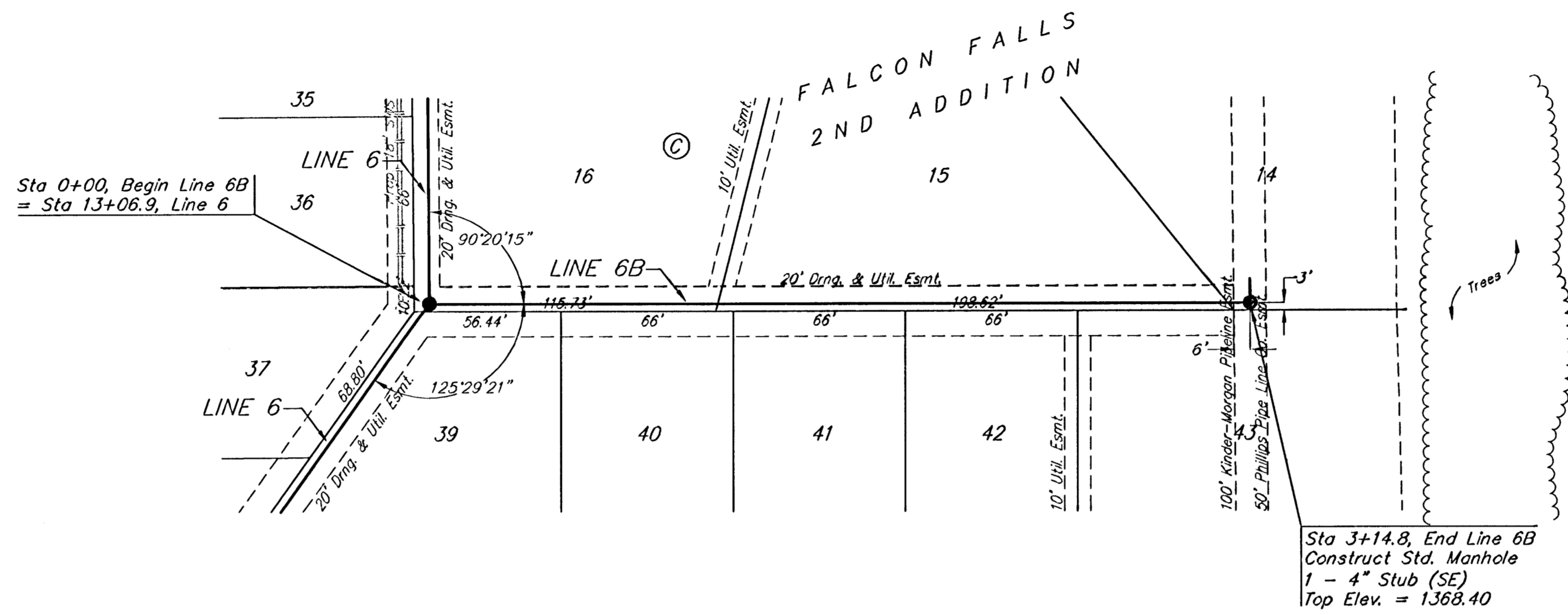


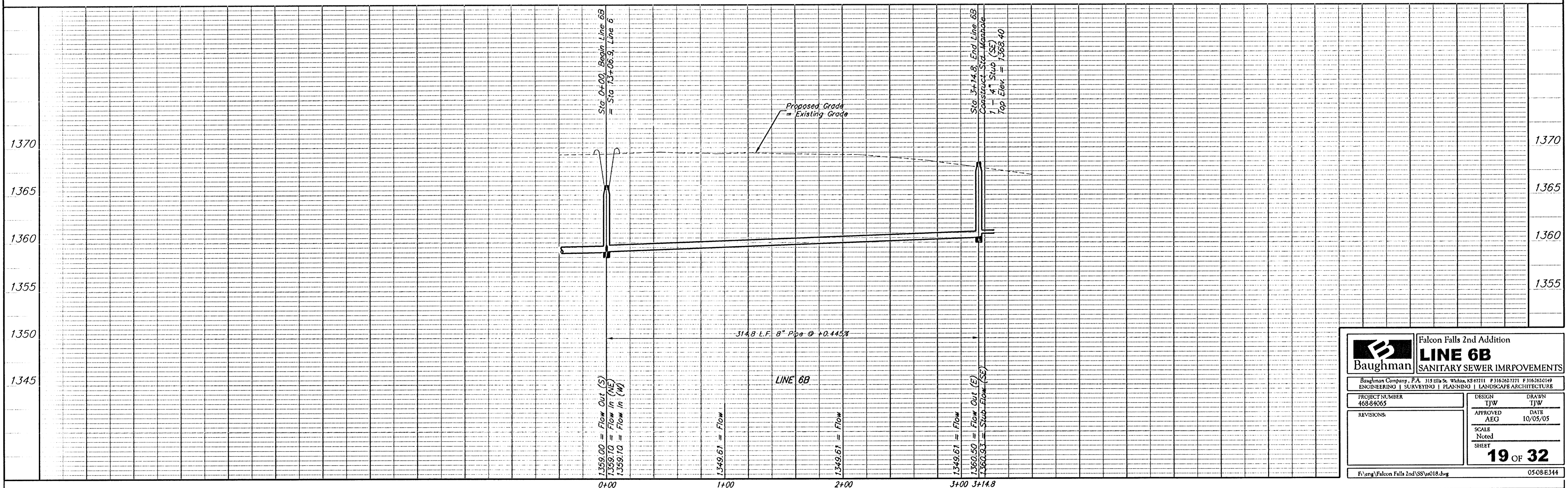
BENCHMARKS

BM #1: Brass Plate on North Hub Guard of R.C.B.C. 50' East of NW Corner NE 1/2, Sec. 22, Twp. 26-S, R-1-E.
Elev. = 1371.83 (NGVD29)

BM #2: "x" cut on East Hub Guard of R.C.B.C., 110' S. of the SE Cor., SE 1/4, Sec. 22, Twp. 26-S, R-1-E.
Elev. = 1359.54 (NGVD29)



Scale: 1" = 40' Horizontal
1" = 5' Vertical
• = Iron



	Falcon Falls 2nd Addition	
	LINE 6B	
SANITARY SEWER IMPROVEMENTS		
Baughman Company, P.A. 114 8th St., P.O. Box 850711, Ft. Lauderdale, FL 33307-0711 F 316-363-7111 F 316-363-0149		
ENGINEERING SURVEYING PLANNING LANDSCAPE ARCHITECTURE		
PROJECT NUMBER 468-84063	DESIGN TJW	DRAWN TJW
APPROVED AEG	DATE 10/05/05	
REVISIONS:	SCALE Noted	SHEET
		19 OF 32
F:\eng\Falcon Falls 2nd\SS\ss018.dwg		05-08-E344