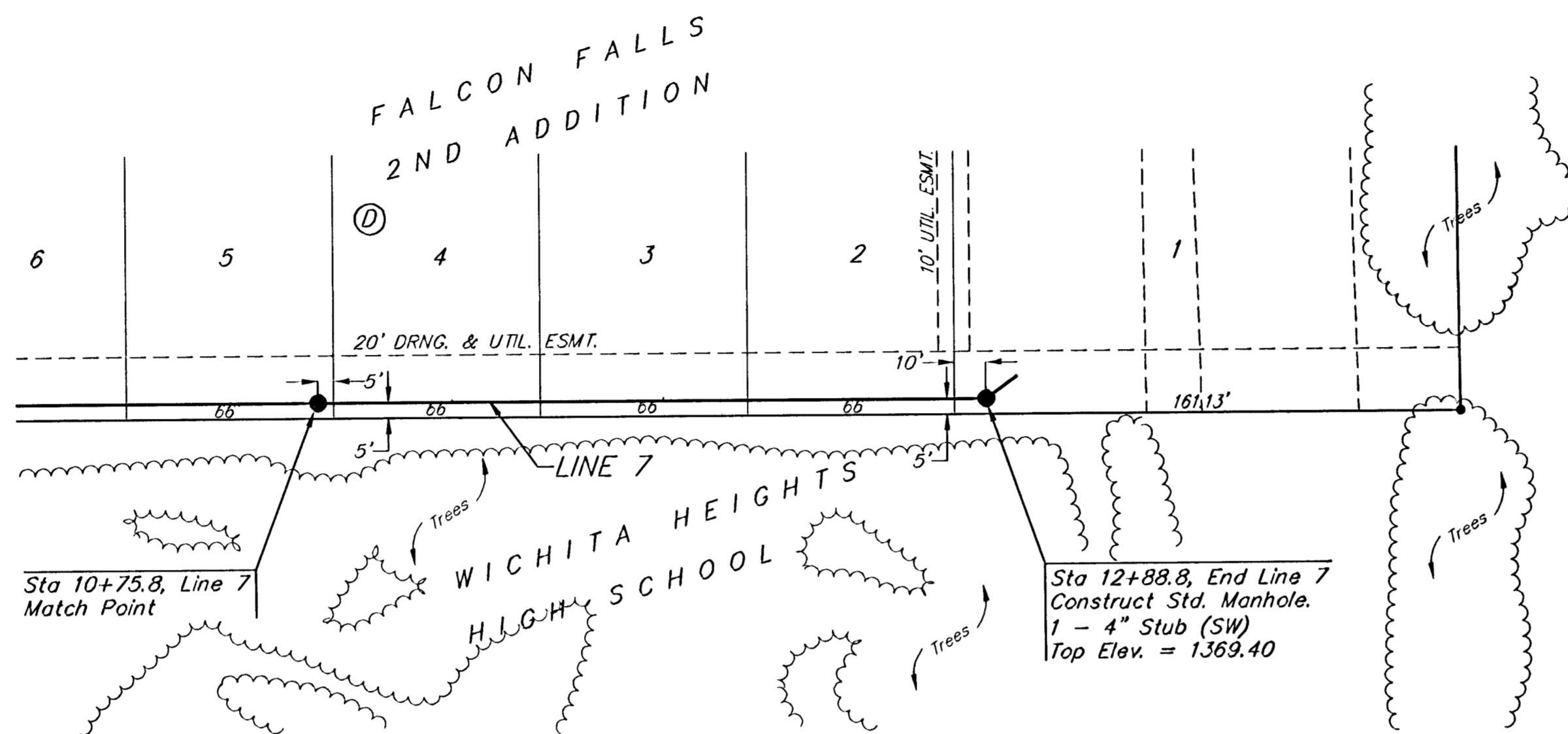
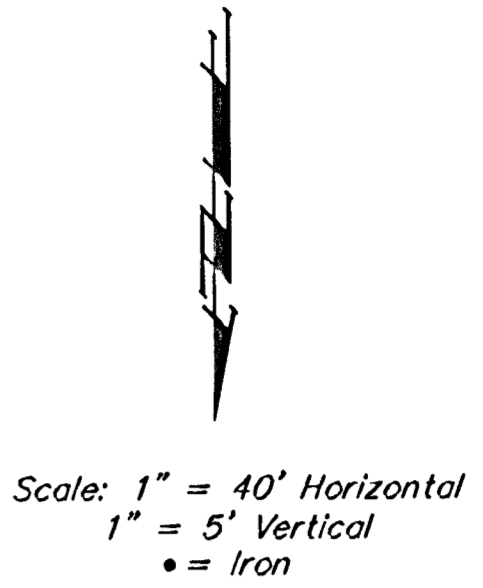


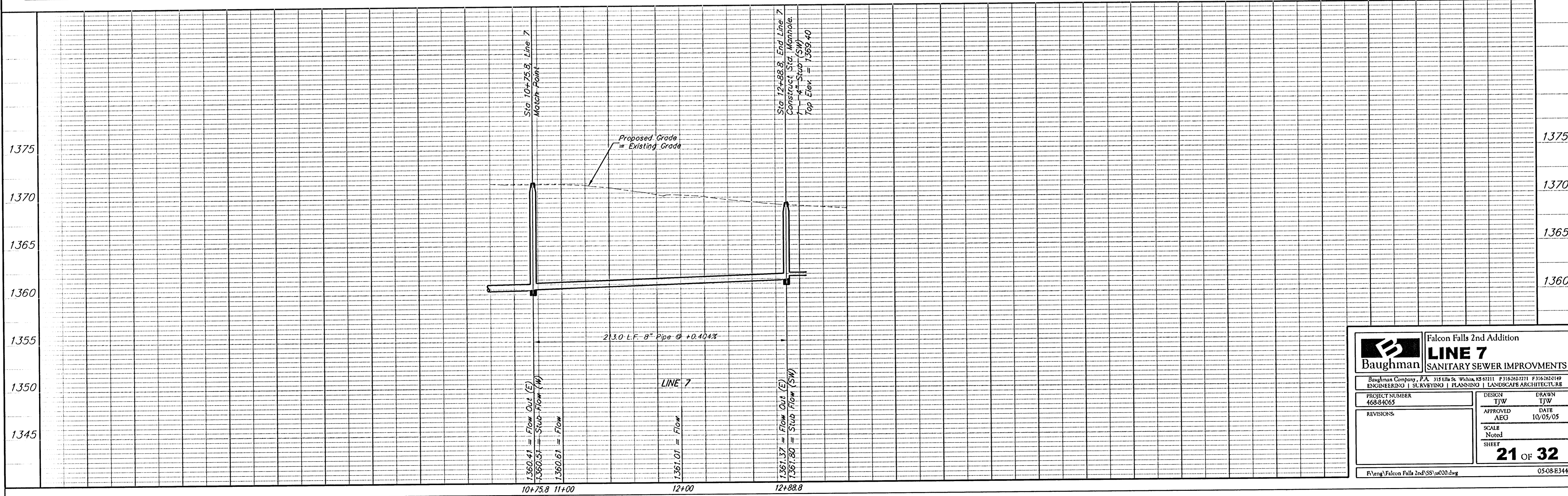
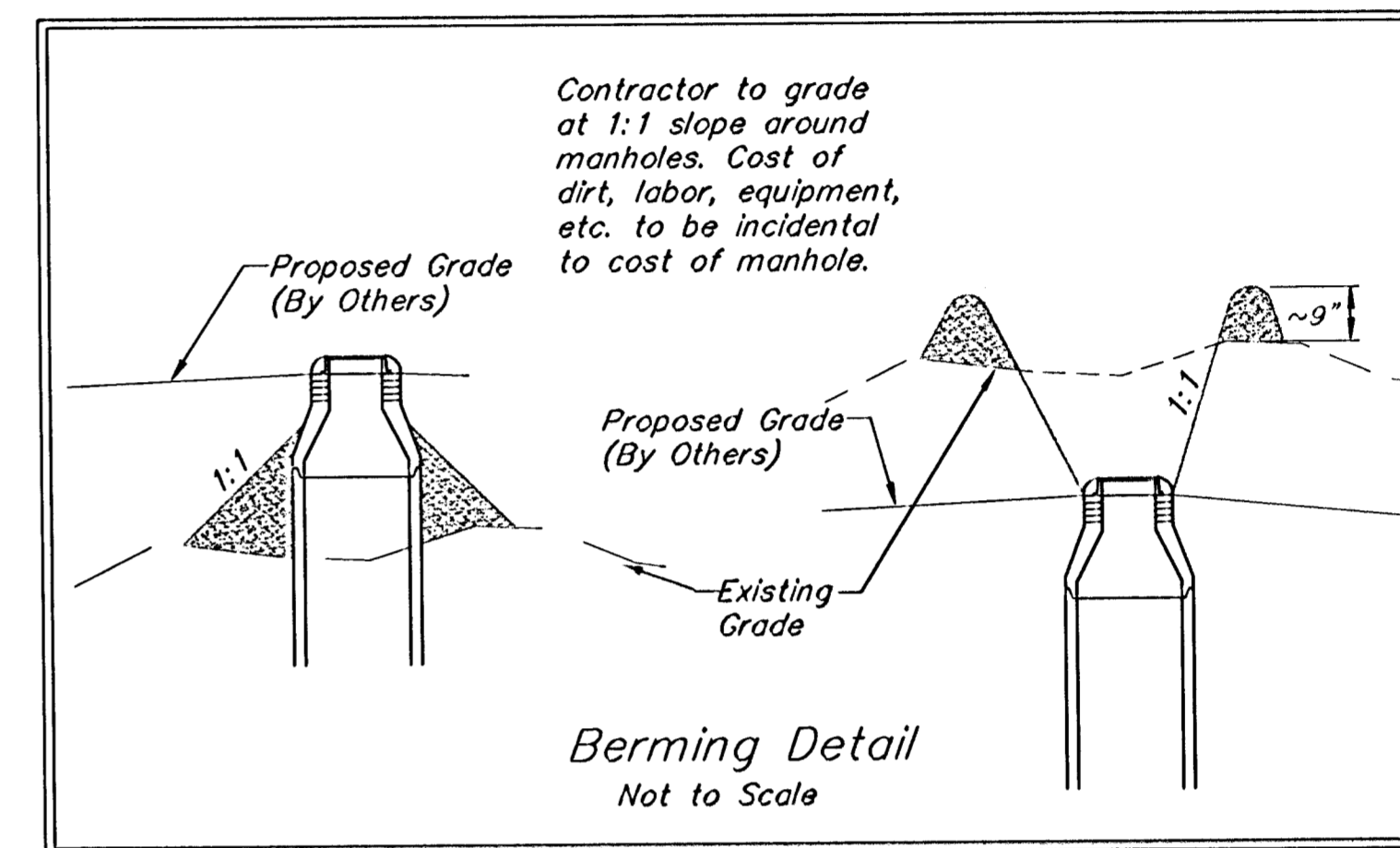
BENCHMARKS

BM #1: Brass Plate on North Hub Guard of R.C.B.C. 50' East of NW Corner NE 1/2, Sec. 22, Twp. 26-S, R-1-E.
Elev. = 1371.83 (NGVD29)

BM #2: "□" cut on East Hub Guard of R.C.B.C., 110' S. of the SE Cor., SE 1/4, Sec. 22, Twp. 26-S, R-1-E.
Elev. = 1359.54 (NGVD29)



Remove trees only as necessary for sanitary sewer construction and only with permission of Developer or Baughman Co. Cost of removal to be incidental to lump sum bid item "Site Clearing & Restoration".



		Falcon Falls 2nd Addition LINE 7 SANITARY SEWER IMPROVEMENTS	
Baughman Company, P.A. 315 E. 11th St. Wichita, KS 67211 P 316-262-7271 F 316-262-1149 ENGINEERING SURVEYING PLANNING LANDSCAPE ARCHITECTURE			
PROJECT NUMBER 468-84065	DESIGN TJW	DRAWN TJW	DATE 10/05/05
REVISIONS:	APPROVED AEG	SCALE Noted	SHEET 21 OF 32
F:\eng\Falcon Falls 2nd SS\ss020.dwg			0508-E344