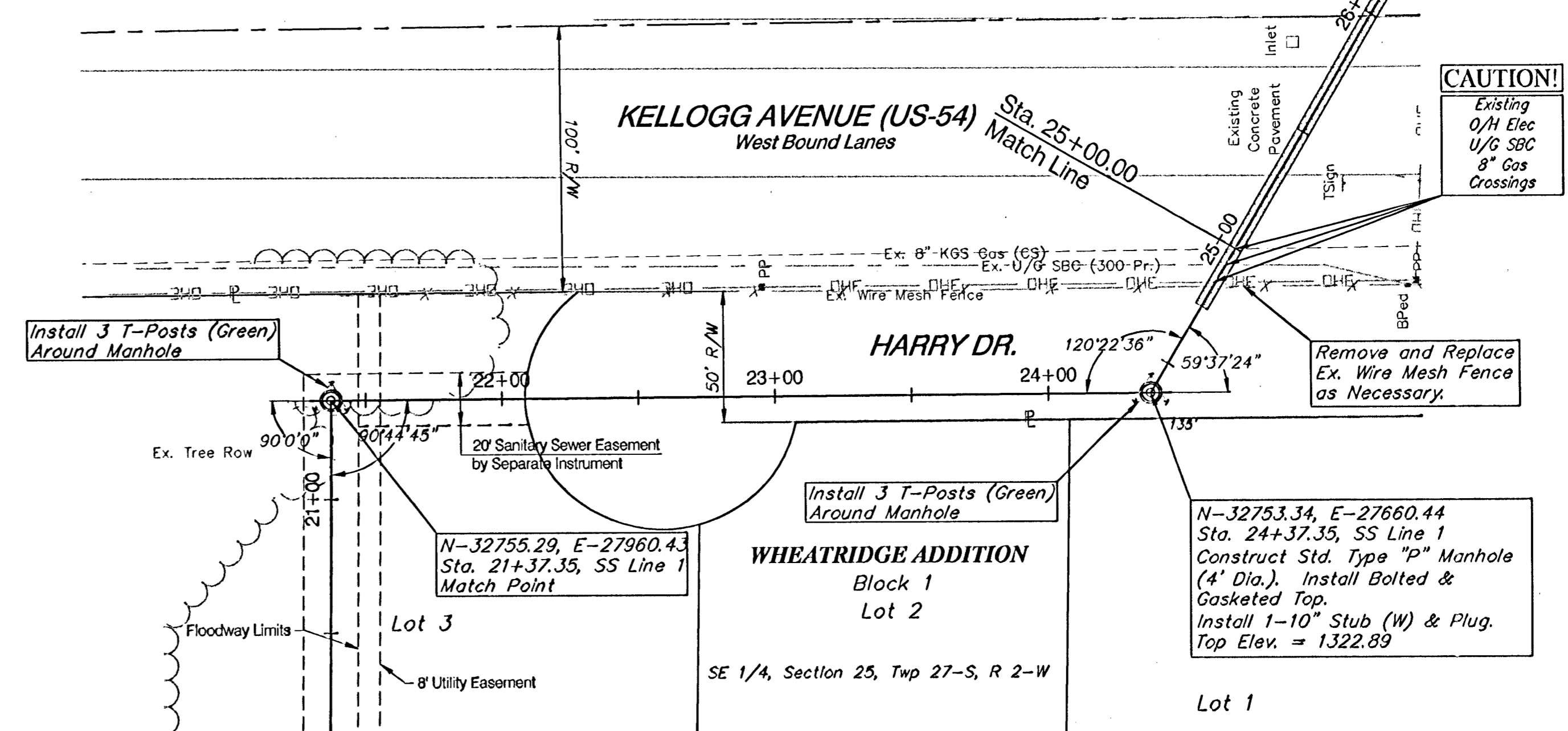
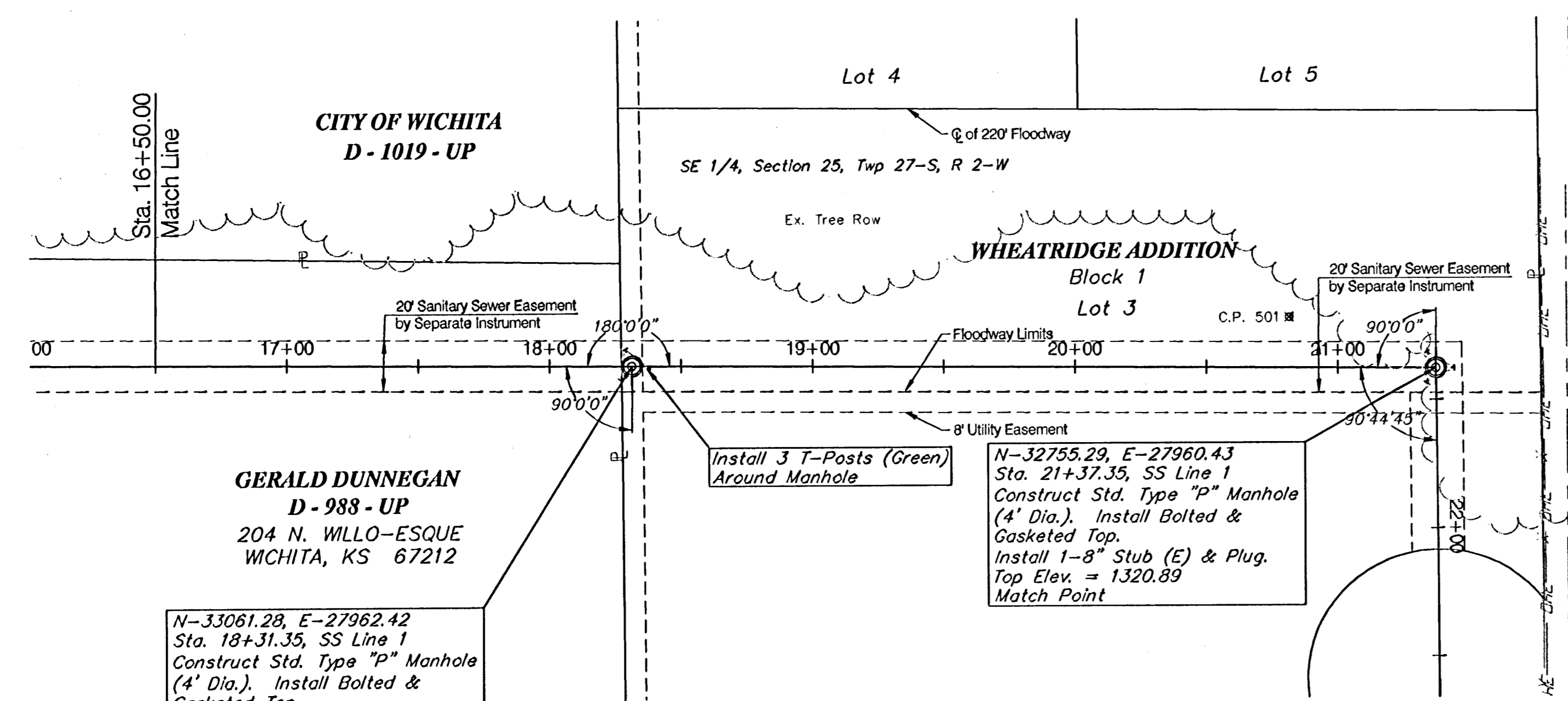


SCALE:
1" = 40' HORIZONTAL
1" = 5' VERTICAL

SCALE:
1" = 40' HORIZONTAL
1" = 5' VERTICAL



**GERALD DUNNEGAN
D-988-UP**
204 N. WILLO-ESQUE
WICHITA, KS 67212

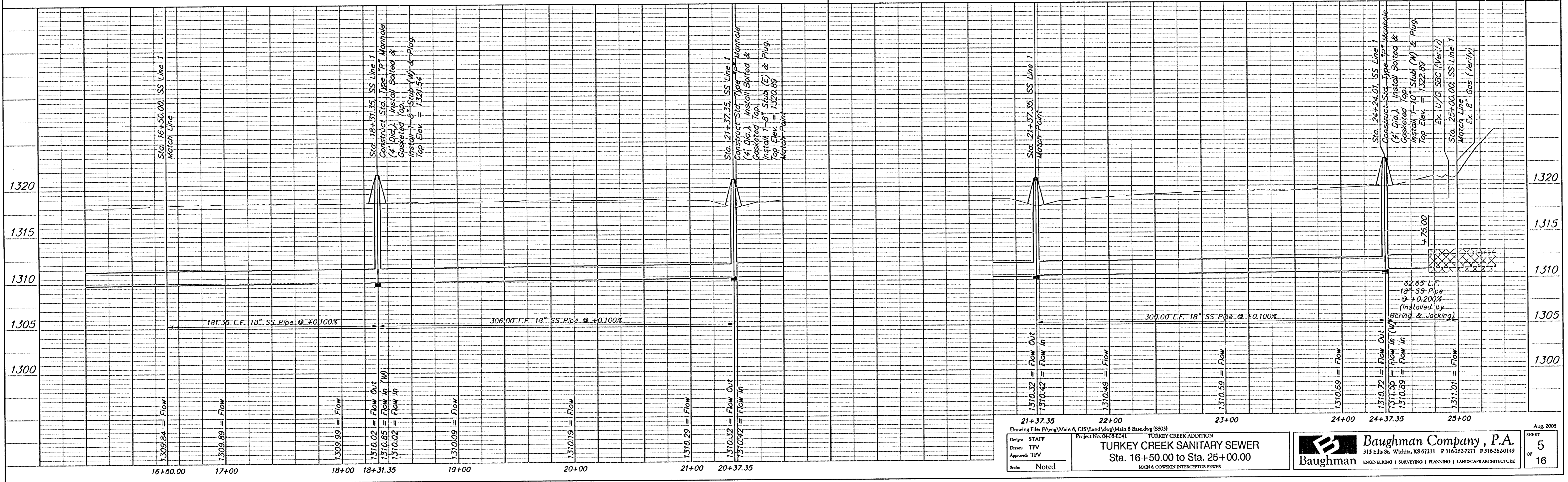
Install 3 T-Posts (Green)
Around Manhole

N-32755.29, E-27960.43
Sta. 21+37.35, SS Line 1
Construct Std. Type "P" Manhole
(4' Dia.). Install Bolted &
Gasketed Top.
Install 1-8" Stub (E) & Plug.
Top Elev. = 1320.89
Match Point

The Contractor shall have the option of replacing the three (3) T-Posts with one (1) Fiberglass Marking Post (Green) as supplied by In Stock Now! Inc. (888) 547-4477, or approved equal. Cost of the T-Posts or Fiberglass Marker shall not be paid for directly, but shall be considered INCIDENTAL to the Manhole Construction.

CAUTION!
Existing
O/H Elec
U/G 300
8" Gas
Crossings

N-32753.34, E-27660.44
Sta. 24+37.35, SS Line 1
Construct Std. Type "P" Manhole
(4' Dia.). Install Bolted &
Gasketed Top.
Install 1-10" Stub (W) & Plug.
Top Elev. = 1322.89



21+37.35
22+00
23+00
24+00
24+37.35
25+00

Design: STAFF
Drawn: TPV
Approved: TPV
Scale: Noted

TURKEY CREEK ADDITION
TURKEY CREEK SANITARY SEWER
Sta. 16+50.00 to Sta. 25+00.00
MAIN & COVSKIN INTERCEPTOR SEWER

Baughman Company, P.A.
315 Ellis St., Wichita, KS 67211 P 316-262-7271 F 316-262-0149
ENGINEERING | SURVEYING | PLANNING | LANDSCAPE ARCHITECTURE

Aug. 2005
SHEET
5
OF
16