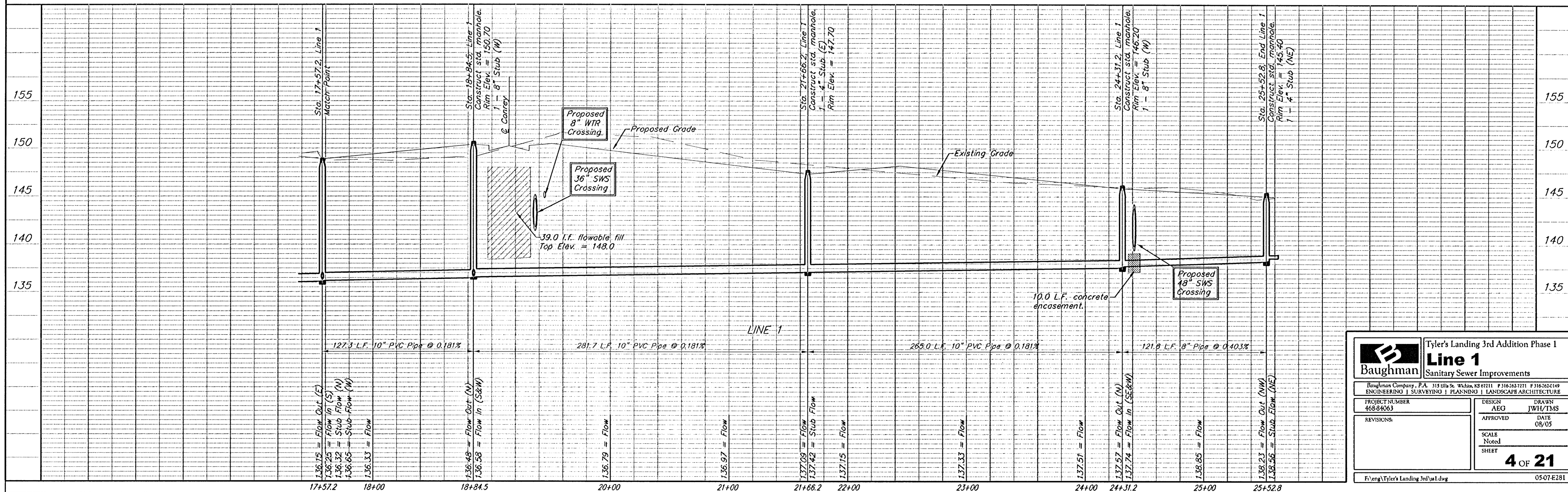
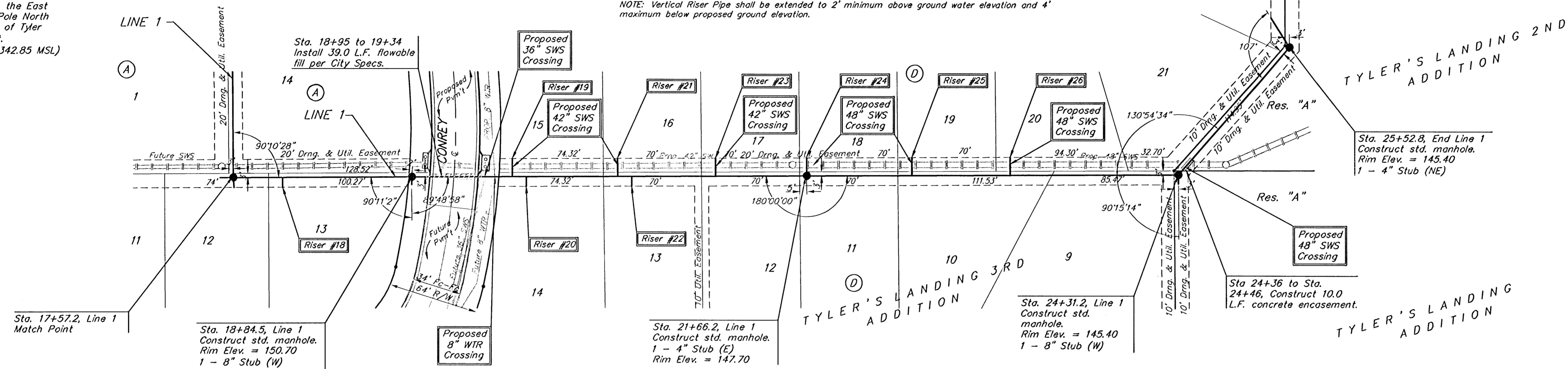
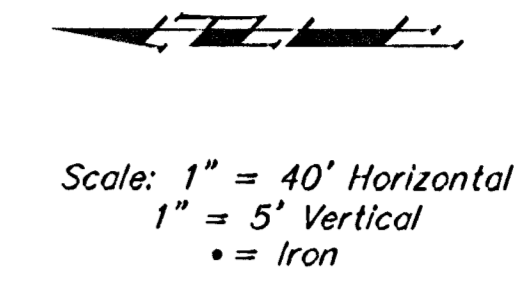


**Benchmarks:**  
 BM #1: "X" on the West End of the Steel Casing Pipe at the Railroad Crossing South of 37th Street North Sta. 25+90, 41' Rt. Elev. = 149.18 (1336.58 MSL)  
 BM #2: Steel T-Post Driven 4' Deep Sta. 18+00, 25' Rt. Elev. = 150.33 (1337.73 MSL)  
 BM #3: "C" in the Concrete Footing of the SBC Pedestal in the South West Corner of 37th Street North and Tyler Road Sta. 8+56, 95' Rt. Elev. = 154.77 (1342.17 MSL)  
 BM #4: Railroad Spike in the East Face of the 2nd Power Pole North of 37th Street and West of Tyler Road Sta. 94+24, 48' Lt. Elev. = 155.45 (1342.85 MSL)

**SEWER SERVICE TABLE**

NUMBER	TYPE	LOCATION			FOR INFORMATION ONLY	
		LOT NO.	BLOCK NO.	LINE NO.	STATION DIRECTION	APPROXIMATE LENGTH 4" PIPE
18	10" x 4" Tee	13	A	10	17+92/Rt. 93	8.0'
19	8" x 4" Tee	15	D	10	19+56/Lt.	9.5'
20	8" x 4" Tee	14	D	10	19+66/Rt.	9.5'
21	8" x 4" Tee	16	D	10	20+31/Lt. 30	8.5'
22	8" x 4" Tee	13	D	10	20+41/Rt.	8.5'
23	8" x 4" Tee	17	D	10	21+04/Lt. 00	7.0'
24	4" Stub	18	D	10	21+66.2/Lt.	6.0'
25	8" x 4" Tee	19	D	10	22+41/Lt.	6.5'
26	8" x 4" Tee	20	D	10	23+11/Lt.	9.5'

NOTE: Vertical Riser Pipe shall be extended to 2' minimum above ground water elevation and 4' maximum below proposed ground elevation.



**Baughman** Tyler's Landing 3rd Addition Phase 1  
**Line 1**  
 Sanitary Sewer Improvements

ENGINEERING | SURVEYING | PLANNING | LANDSCAPE ARCHITECTURE

PROJECT NUMBER: 468-8463  
 DESIGN: AEO  
 DRAWN: JWI/TMS  
 APPROVED: DATE: 08/05  
 SCALE: Noted  
 SHEET: **4 OF 21**

F:\eng\Tyler's Landing 3rd\ast.dwg 0507E281