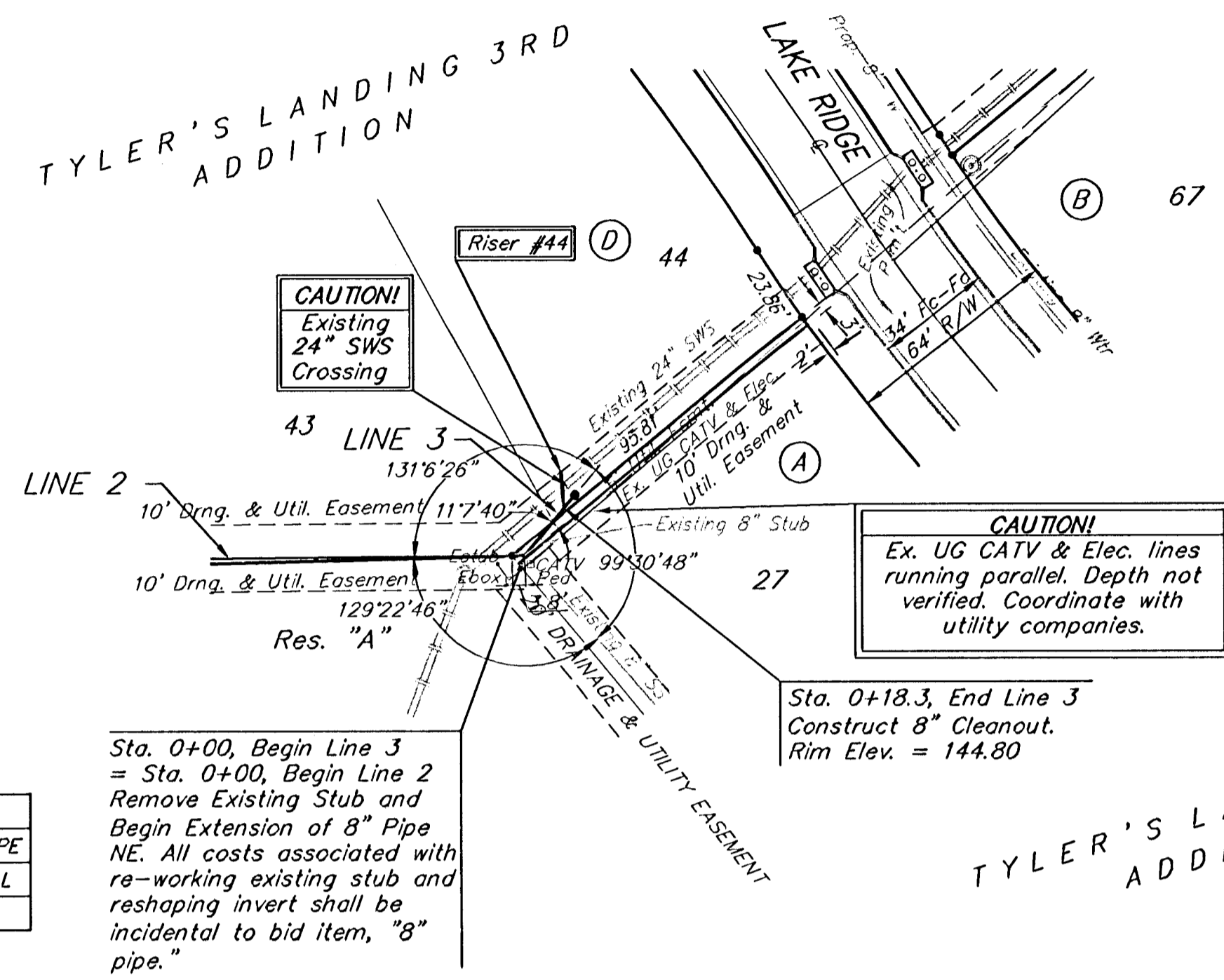


Benchmarks:
 BM #1: "X" on the West End of the Steel Casing Pipe at the Railroad Crossing South of 37th Street North Sta. 25+90, 41' Rt. Elev. = 149.18 (1336.58 MSL)
 BM #2: Steel T-Post Driven 4' Deep Sta. 18+00, 25' Rt. Elev. = 150.33 (1337.73 MSL)
 BM #3: "C" in the Concrete Footing of the SBC Pedestal in the South West Corner of 37th Street North and Tyler Road Sta. 8+56, 95' Rt. Elev. = 154.77 (1342.17 MSL)
 BM #4: Railroad Spike in the East Face of the 2nd Power Pole North of 37th Street and West of Tyler Road Sta. 94+24, 48' Lt. Elev. = 155.45 (1342.85 MSL)

↑
 Scale: 1" = 40' Horizontal
 1" = 5' Vertical
 • = Iron

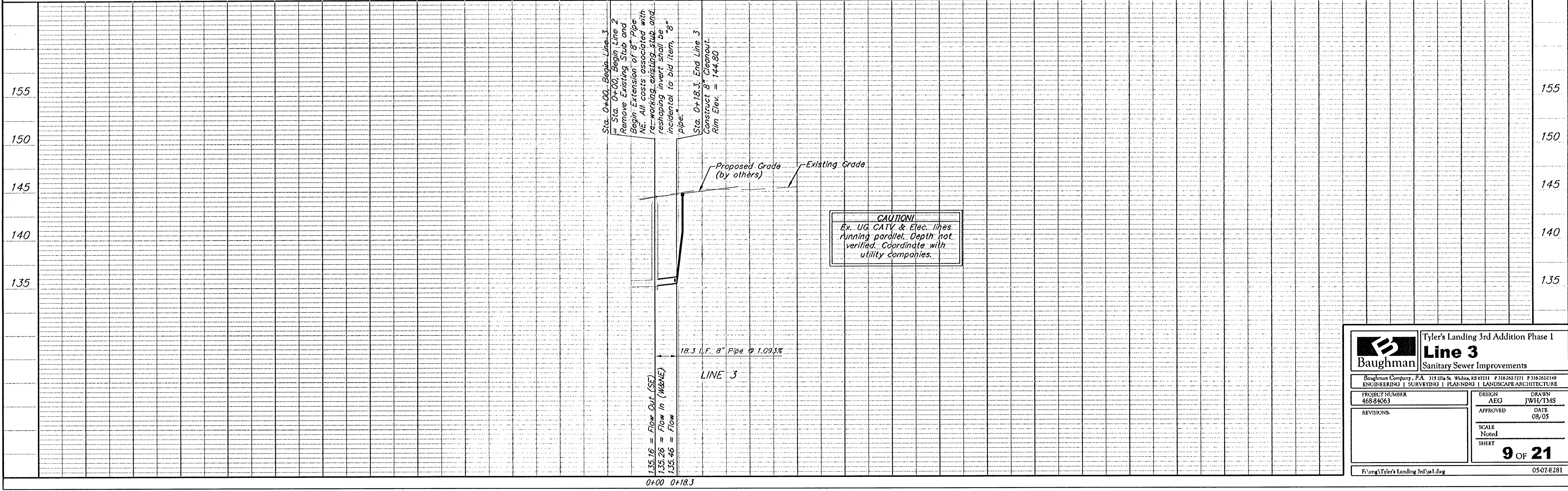


SEWER SERVICE TABLE

NUMBER	TYPE	LOCATION				FOR INFORMATION ONLY	
		LOT NO.	BLOCK NO.	LINE NO.	STATION\ DIRECTION	APPROXIMATE LENGTH 4" PIPE VERTICAL	HORIZONTAL
44*	4" pipe from Cleanout	44	D	3	0+25/Lt. 2	5.0'	13'

NOTE: Vertical Riser Pipe shall be extended to 2' minimum above ground water elevation and 4' maximum below proposed ground elevation.
 * Riser #44 shall be constructed using Method "B". See Riser Detail Sheet.

Sta. 0+00, Begin Line 3 = Sta. 0+00, Begin Line 2
 Remove Existing Stub and Begin Extension of 8" Pipe NE. All costs associated with re-working existing stub and reshaping invert shall be incidental to bid item, "8" pipe."
 Sta. 0+18.3, End Line 3 Construct 8" Cleanout. Rim Elev. = 144.80



Baughman		Tyler's Landing 3rd Addition Phase I Line 3 Sanitary Sewer Improvements	
Baughman Company, P.A. 315 9th & Walnut, N.S. 01111 F3163823111 F3163823119 ENGINEERING SURVEYING PLANNING LANDSCAPE ARCHITECTURE			
PROJECT NUMBER 468-94063	DESIGN AEG	DRAWN JWH/TMS	DATE 08/05
REVISIONS:	SCALE Noted		
9 OF 21			SHEET
F:\eng\Tyler's Landing 3rd\td.dwg			0507-E281