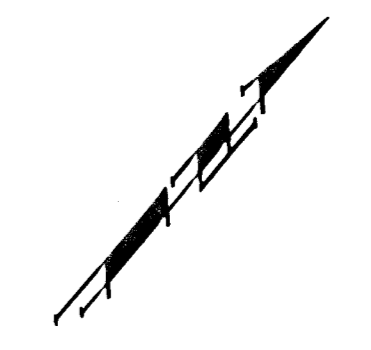


**Benchmarks:**  
 BM #1: "X" on the West End of the Steel Casing Pipe at the Railroad Crossing South of 37th Street North Sta. 25+90, 41' Rt. Elev. = 149.18 (1336.58 MSL)  
 BM #2: Steel T-Post Driven 4' Deep Sta. 18+00, 25' Rt. Elev. = 150.33 (1337.73 MSL)  
 BM #3: "□" in the Concrete Footing of the SBC Pedestal in the South West Corner of 37th Street North and Tyler Road Sta. 8+56, 95' Rt. Elev. = 154.77 (1342.17 MSL)  
 BM #4: Railroad Spike in the East Face of the 2nd Power Pole North of 37th Street and West of Tyler Road Sta. 94+24, 48' Lt. Elev. = 155.45 (1342.85 MSL)

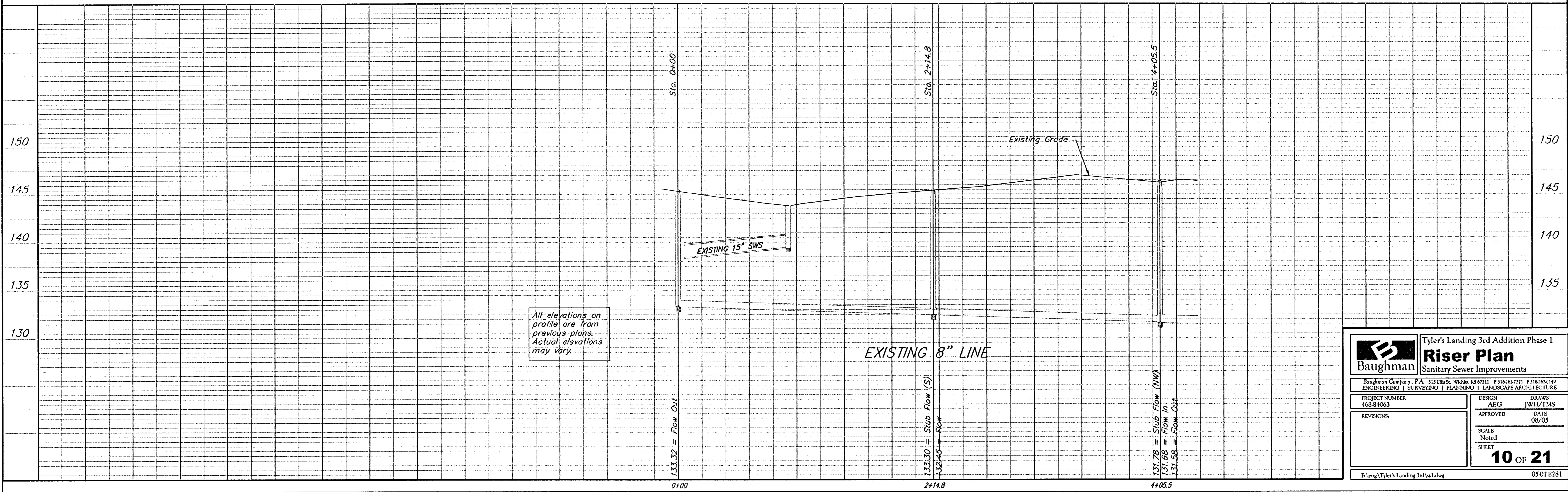
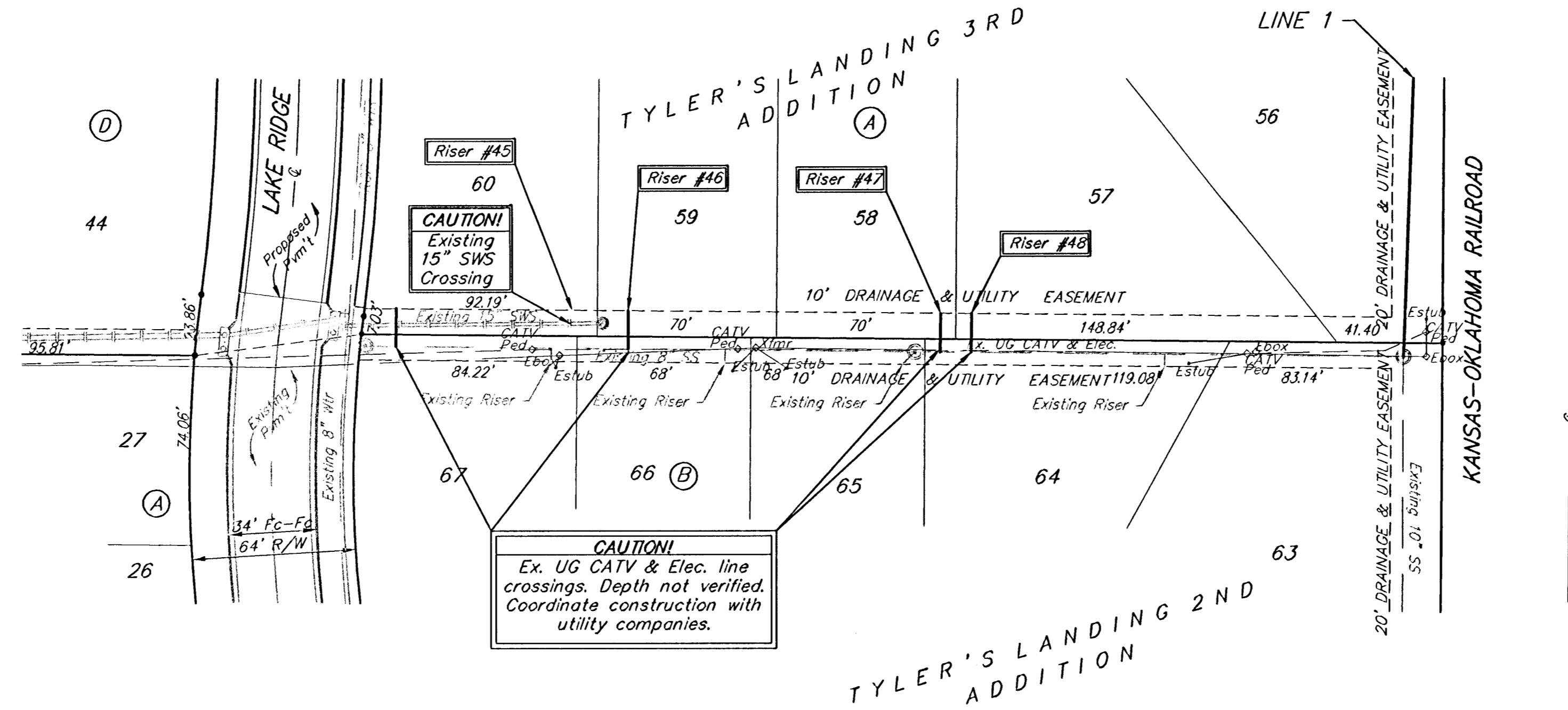


Scale: 1" = 40' Horizontal  
 1" = 5' Vertical  
 • = Iron

SEWER SERVICE TABLE

NUMBER	TYPE	LOCATION				FOR INFORMATION ONLY	
		LOT NO.	BLOCK NO.	LINE NO.	STATION* DIRECTION	APPROXIMATE LENGTH 4" PIPE VERTICAL	HORIZONTAL
45	8" x 4" Tee	60	A	-	0+12/Lt.	10.0'	15'
46	8" x 4" Tee	59	A	-	1+03/Lt.	9.0'	15'
47	8" x 4" Tee	58	A	-	2+25/Lt.	8.5'	15'
48	8" x 4" Tee	57	A	-	2+37/Lt.	8.0'	15'

NOTE: Vertical Riser Pipe shall be extended to 2' minimum above ground water elevation and 4' maximum below proposed ground elevation.  
 \* Station determined using MH at NW Cor Lot 67, B as Sta. 0+00.



**Baughman** Tyler's Landing 3rd Addition Phase 1  
**Riser Plan**  
 Sanitary Sewer Improvements

Design: AEG, JWL/TMS  
 Approved: DATE 08/05  
 Scale: Noted  
 Sheet: **10 OF 21**

PROJECT NUMBER: 468-04063  
 REVISIONS:  
 F:\eng\Tyler's Landing 3rd\1.dwg 0507E281