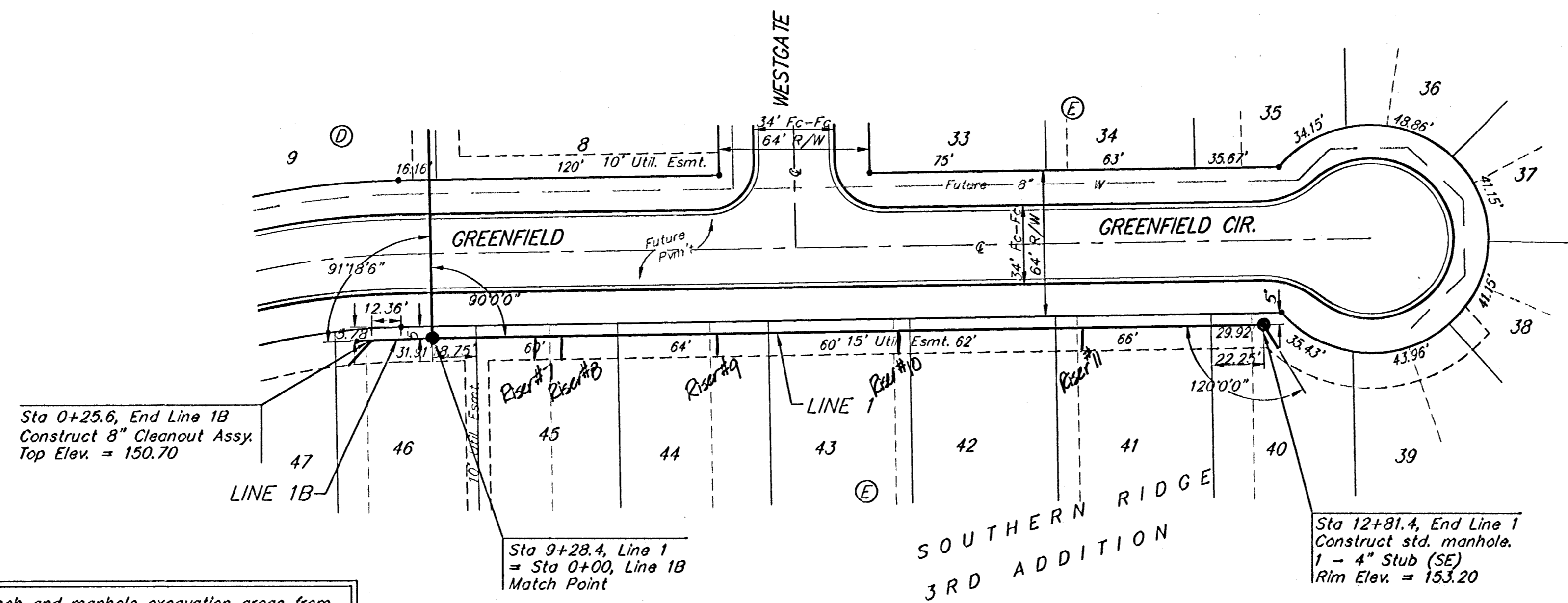


BENCHMARKS:
 BM #1: COW Disc in top of curb adjacent to the fire hydrant at the SW corner of Yosemite and Lamp Cir.
 Elev. = 146.73 (City Datum)
 BM #2: COW Disc in top of curb adjacent to the fire hydrant on the west side of Westgate along the southwesterly line of Lot 13, Block B, Southern Ridge Addition.
 Elev. = 144.10 (City Datum)



Sta 0+25.6, End Line 1B
 Construct 8" Cleanout Assy.
 Top Elev. = 150.70

Sta 9+28.4, Line 1
 = Sta 0+00, Line 1B
 Match Point

Sta 12+81.4, End Line 1
 Construct std. manhole.
 1 - 4" Stub (SE)
 Rim Elev. = 153.20

All trench and manhole excavation areas from Sta. 9+28.4 to Sta. 12+81.4, Line 1 and Sta. 0+00 to Sta. 0+25.6, Line 1B shall be backfilled with sand. The sand backfill shall be within two feet of existing grade and shall be water-jagged and vibrated during backfilling. All costs shall be subsidiary to pipe cost.

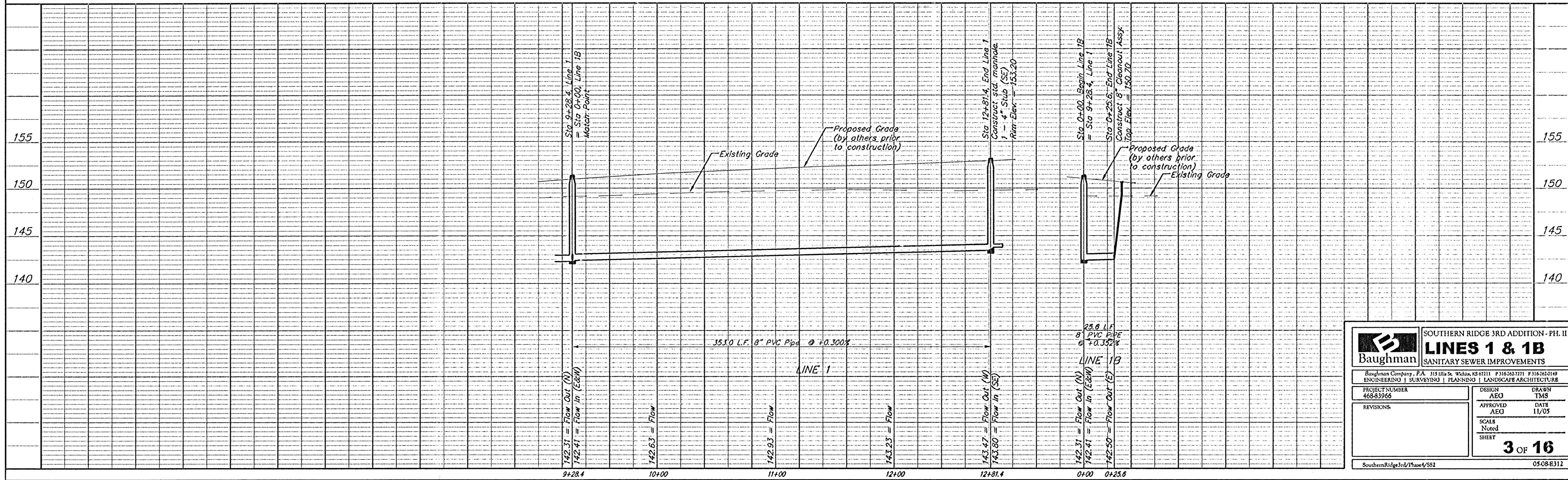
— Lot Line - Current Southern Ridge 3rd Add.
 - - - Lot Line - Future Southern Ridge 4th Add.

Scale: 1" = 40' Horizontal
 1" = 5' Vertical
 • = Iron

SEWER SERVICE TABLE

Riser#	Line#	Station	Distance From		
			Main to Riser (L/R)	Upstream MH	Downstream MH
7	1	9+73	Rt. 10'	308.40	44.60
8	1	9+83	Rt. 10'	298.40	54.60
9	1	10+51	Rt. 10'	230.40	122.60
10	1	11+29	Rt. 10'	152.40	200.60
11	1	12+07	Rt. 10'	74.40	278.60

Note: Risers follow lot lines for future Southern Ridge 4th Addition



Baughman ENGINEERING & ARCHITECTURE
 315 E. 11th St., Wichita, KS 67211 P 316-263-7271 F 316-263-0109
 ENGINEERING | SURVEYING | PLANNING | LANDSCAPE ARCHITECTURE

SOUTHERN RIDGE 3RD ADDITION - PH. II
LINES 1 & 1B
 SANITARY SEWER IMPROVEMENTS

PROJECT NUMBER: 468-3066
 DESIGN: AEG
 APPROVED: AEG
 SCALE: Noted
 SHEET: 3 OF 16

REVISIONS:
 DATE: 11/05

SouthernRidge3rdPhaseVSS2 05-08-B312